

VOR/DME LAR **117.6**  
 APP CRS **292°**  
 Chan **123**

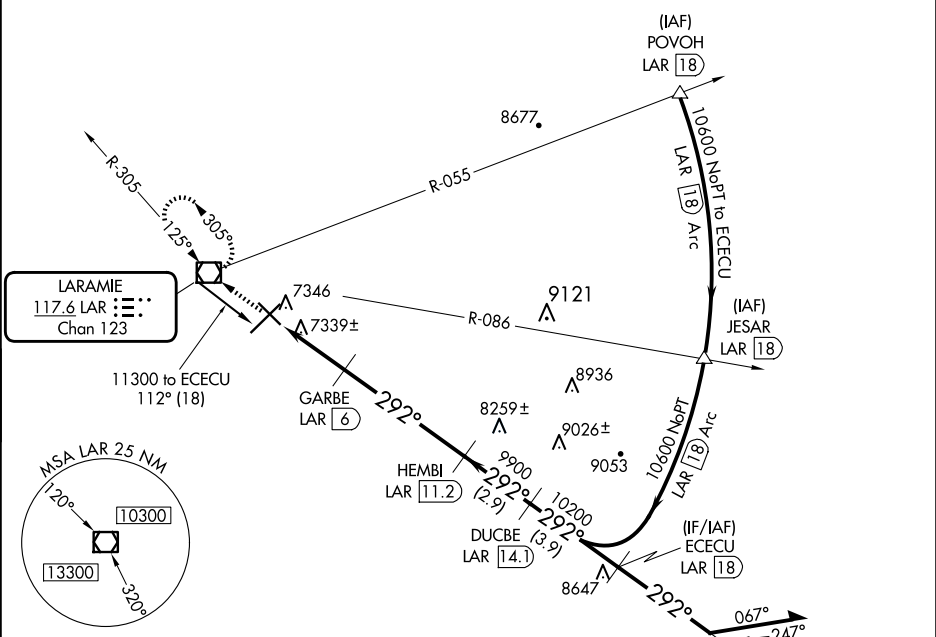
Rwy Idg **6301**  
 TDZE **7278**  
 Apt Elev **7284**

# VOR/DME RWY 30

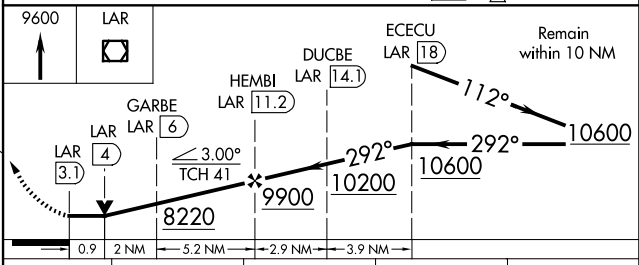
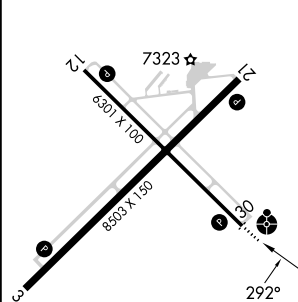
LARAMIE RGNL (L.A.R.)

**ODALS** MISSED APPROACH: Climb to 9600 direct LAR VOR/DME and hold, continue climb-in-hold to 9600.

**ASOS 135.475**      **DENVER CENTER 125.9 284.7**      **UNICOM 123.05 (CTAF)**



ELEV 7284 **D** TDZE 7278



CATEGORY	A	B	C	D
S-30	7600-¾ 322 (400-¾)			7600-1 322 (400-1)
CIRCLING	7660-1 376 (400-1)	7760-1 476 (500-1)	7880-1½ 596 (600-1½)	7920-2 636 (700-2)