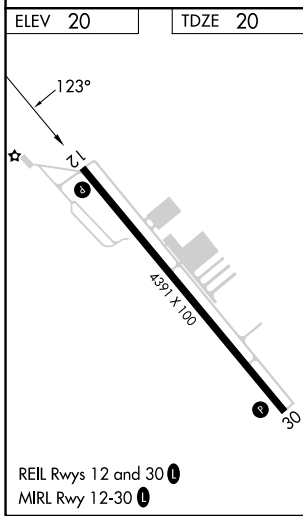
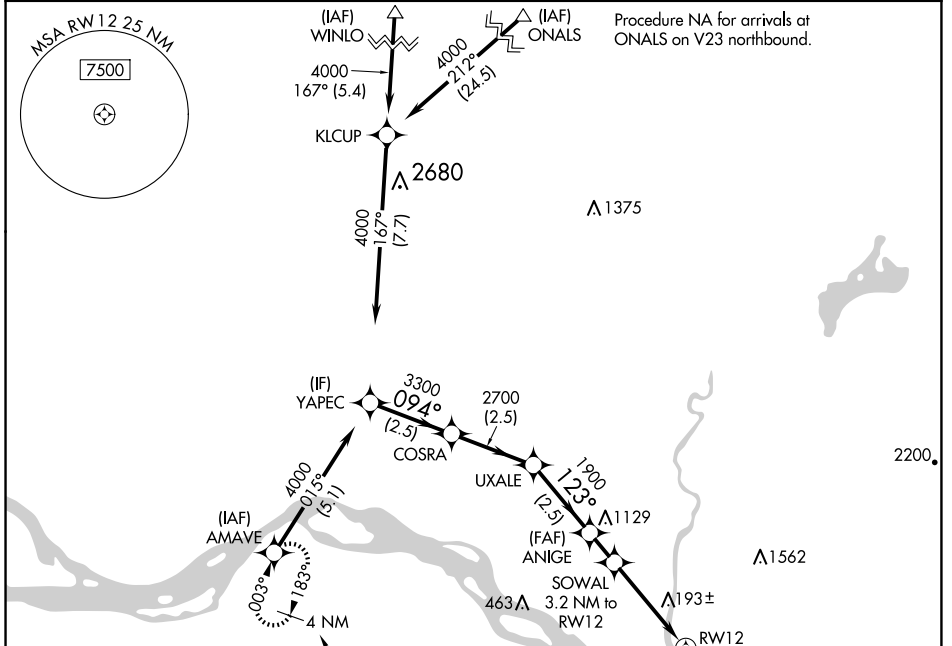


WAAS CH 65743 W12A	APP CRS 123°	Rwy Idg TDZE Apt Elev	4391 20 20
----------------------------------------	------------------------	-----------------------------	---------------------------------------

RNAV (GPS) RWY 12

SOUTHWEST WASHINGTON RGNL (KLS)

RNP APCH. ⚠ Circling NA northeast of Rwy 12-30. Circling Rwy 30 NA at night. Rwy 12 helicopter visibility reduction below 3/4 SM NA. For uncompensated Baro-VNAV systems, LNAV/VNAV NA below -6°C or above 54°C.	MISSED APPROACH: Climb to 800 then climbing right turn to 4000 direct AMAVE and hold, continue climb-in-hold to 4000.	
AWOS-3PT 135.075	SEATTLE CENTER 124.2 317.6	UNICOM 122.725 (CTAF) 0



YAPEC		COSRA		UXALE		ANIGE		SOWAL		800	4000	AMAVE
4000		3300		2700		1900		3.2 NM to RW12		↑	↷	✦
GP 4.00°		TCH 50		123°		*1420		*2.1 NM to RW12		*LNAV only		
2.5 NM		2.5 NM		2.5 NM		1 NM		1.1		2.1 NM		
CATEGORY	A	B		C		D						
LPV DA	608-1 ³ / ₄	588 (600-1 ³ / ₄)				NA						
LNAV/VNAV DA	766-2	746 (800-2)				NA						
LNAV MDA	980-1 ¹ / ₂	980-1 ¹ / ₂				NA						
ⓐ CIRCLING	980-1 ¹ / ₄	980-1 ¹ / ₂				NA						
	960 (1000-1 ¹ / ₄)	960 (1000-1 ¹ / ₂)										

NW-1, 15 MAY 2025 to 12 JUN 2025

NW-1, 15 MAY 2025 to 12 JUN 2025