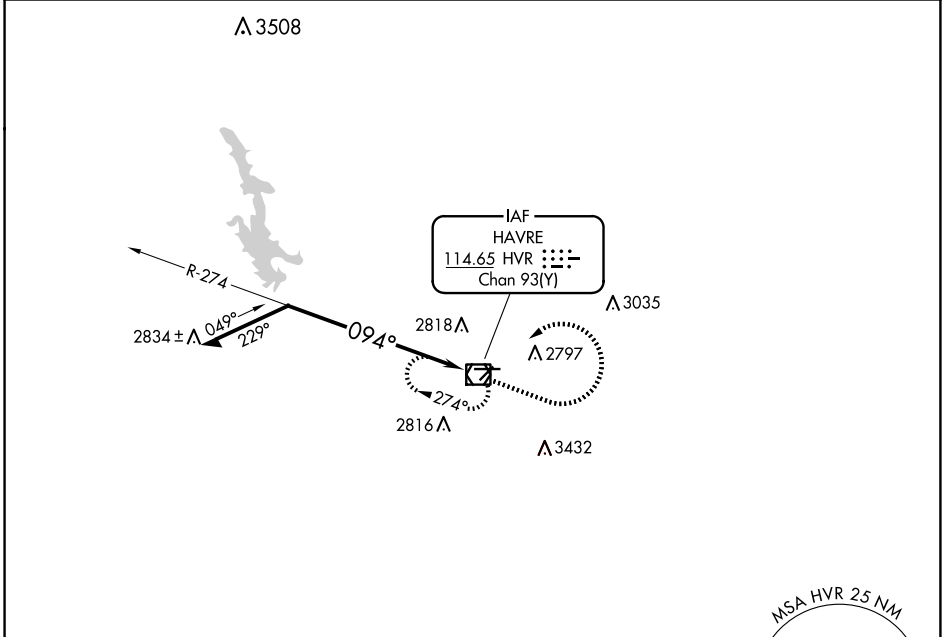


VOR/DME HVR <b>114.65</b> Chan 93(Y)	APP CRS <b>094°</b>	Rwy Idg TDZE Apt Elev	<b>5205</b> <b>2585</b> <b>2591</b>
--	------------------------	-----------------------------	---

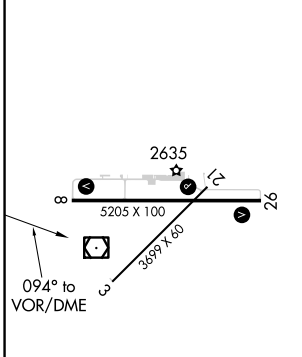
**VOR RWY 8**  
HAVRE CITY-COUNTY (HVR)

**MISSED APPROACH:** Climb to 3500 then climbing left turn to 8000 direct HVR VOR/DME and hold, continue climb-in-hold to 8000.

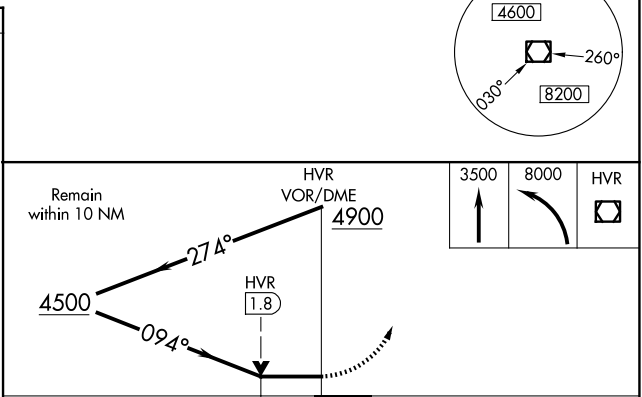
ASOS <b>135.225</b>	SALT LAKE CENTER <b>133.4 285.4</b>	UNICOM <b>122.8 (CTAF)</b>
------------------------	--	-------------------------------



ELEV 2591	<b>D</b>	TDZE 2585
-----------	----------	-----------



REIL Rws 8 and 26  
MIRL Rwy 8-26  
MIRL Rwy 3-21



CATEGORY	A	B	C	D
S-8	3140-1	555 (600-1)	3140-1 <sup>5</sup> / <sub>8</sub>	555 (600-1 <sup>5</sup> / <sub>8</sub> )
CIRCLING	3140-1	549 (600-1)	3360-2 <sup>1</sup> / <sub>4</sub> 769 (800-2 <sup>1</sup> / <sub>4</sub> )	3740-3 1149 (1200-3)

NW-1, 15 MAY 2025 to 12 JUN 2025

NW-1, 15 MAY 2025 to 12 JUN 2025