

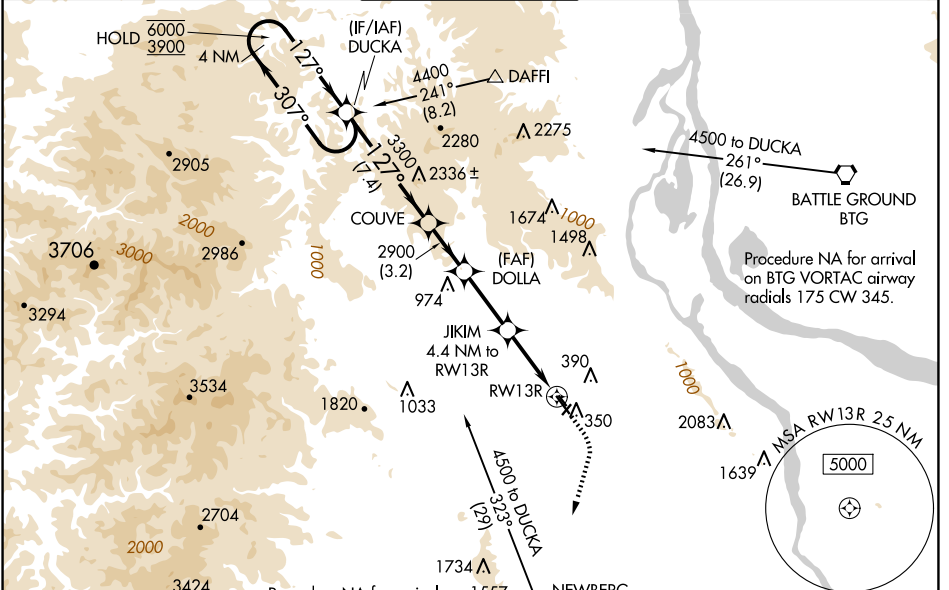
WAAS CH 69502 W13A	APP CRS 127°	Rwy Idg TDZE Apt Elev	6600 203 208
--	------------------------	-----------------------------	---

RNAV (GPS) RWY 13R

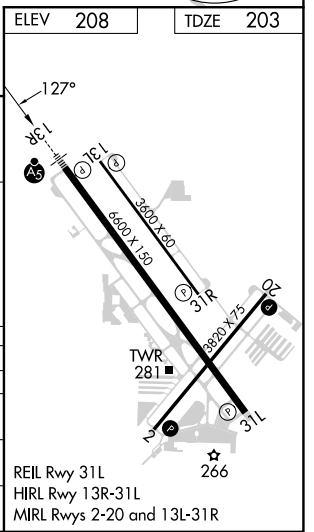
PORTLAND-HILLSBORO (HIO)

RNP APCH.	MALSR	MISSED APPROACH: Climb to 1000 then climbing right turn to 3000 direct UBG VOR/DME and hold. Continue climb-in-hold to 3000.
<p>▽ Circling to Rwy 13L-31R NA at night. For uncompensated Baro-VNAV systems, LNAV/VNAV NA below -18°C or above 54°C. For inop ALS, increase LNAV Cat A/B visibility to RVR 5500 and Cat C/D to 1 3/8 SM. ▲ #RVR 1800 authorized with use of FD or AP or HUD to DA.</p>		

ATIS 127.65	PORTLAND APP CON 126.0 269.175	HILLSBORO TOWER ★ 119.3 (CTAF) 239.3	GND CON 121.7	UNICOM 122.95
-----------------------	--	--	-------------------------	-------------------------



4 NM Holding Pattern		DUCKA	COUVE	DOLLA	JIKIM	UBG
6000 ← 307°						
3900 → 127°						
GP 3.00°						
TCH 48						
		7.4 NM	3.2 NM	3.9 NM	3.1 NM	1.3 NM
CATEGORY	A	B	C	D		
LPV DA#	403/24		200 (200-1/2)			
LNAV/VNAV DA	661/45		458 (500-7/8)			
LNAV MDA	660/40	457 (500-3/4)	660/50	457 (500-1)		
CIRCLING	680-1 472 (500-1)	720-1 512 (600-1)	720-1 1/2 512 (600-1 1/2)	980-2 1/2 772 (800-2 1/2)		



NW-1, 15 MAY 2025 to 12 JUN 2025

NW-1, 15 MAY 2025 to 12 JUN 2025