

VOR/DME FCA <b>113.2</b> Chan <b>79</b>	APP CRS <b>316°</b>	Rwy Idg TDZE Apt Elev	<b>3510</b> <b>2974</b> <b>2977</b>
---	------------------------	-----------------------------	---

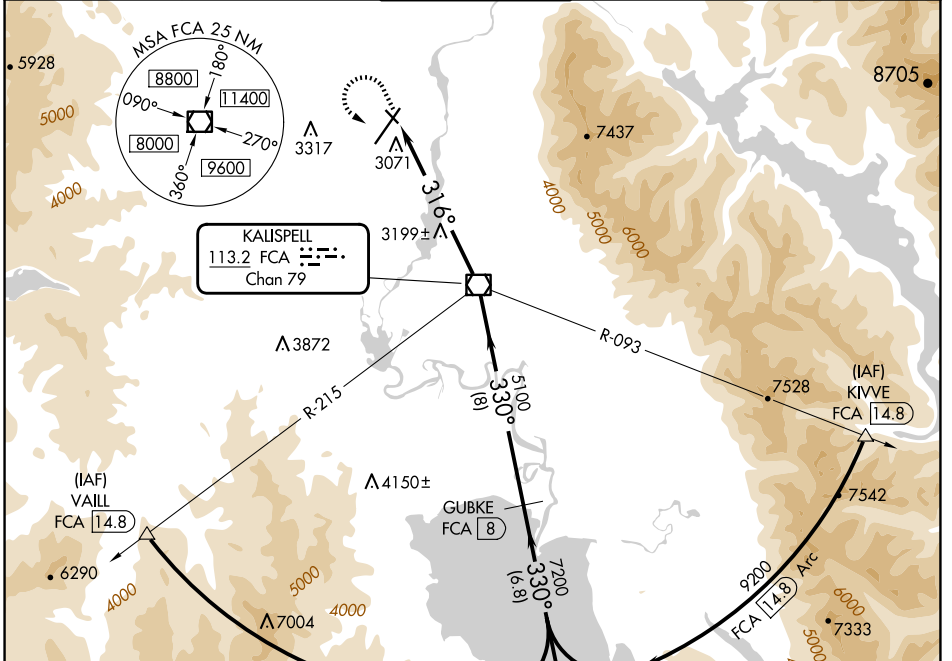
# VOR/DME RWY 30

GLACIER PARK INTL (GPI)

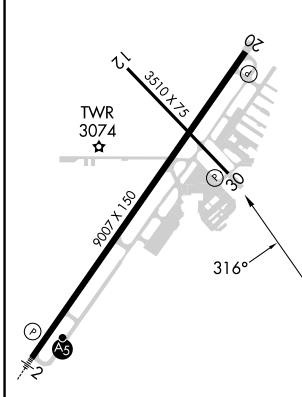
**⚠** Rwy 30 helicopter visibility reduction below  $\frac{3}{4}$  SM NA.  
**⚠** -15°C

MISSED APPROACH: Climb to 4000 then climbing left turn to 9300 via heading 130° and FCA R-150 to ITONE/14.8 DME and hold, continue climb-in-hold to 9300.

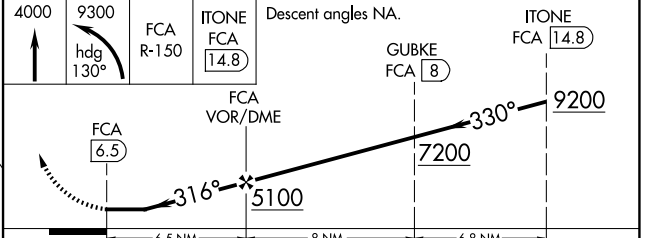
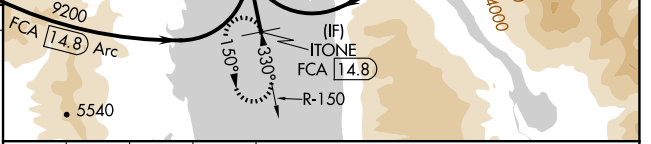
ATIS <b>132.625</b>	SALT LAKE CENTER <b>127.075 244.875</b>	GLACIER TOWER* <b>124.55 (CTAF) 0</b>	GND CON <b>121.6</b>	UNICOM <b>122.95</b>
------------------------	--	--	-------------------------	-------------------------



ELEV 2977 **D** TDZE 2974



REIL Rwy 20 **0**  
 MIRL Rwy 12-30 **0**  
 HIRL Rwy 2-20



CATEGORY	A	B	C	D
S-30	3480-1	506 (600-1)	3480-1½	506 (600-1½)
<b>C</b> CIRCLING	3520-1 543 (600-1)	3580-1 603 (700-1)	3680-2 703 (800-2)	3760-2½ 783 (800-2½)

NW-1, 15 MAY 2025 to 12 JUN 2025

NW-1, 15 MAY 2025 to 12 JUN 2025