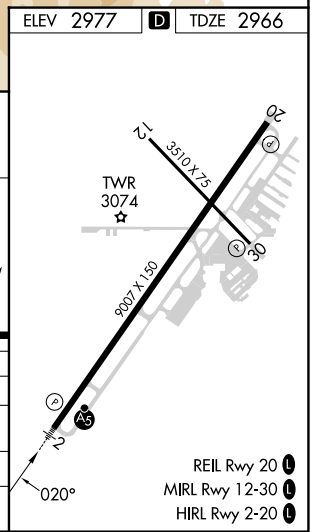
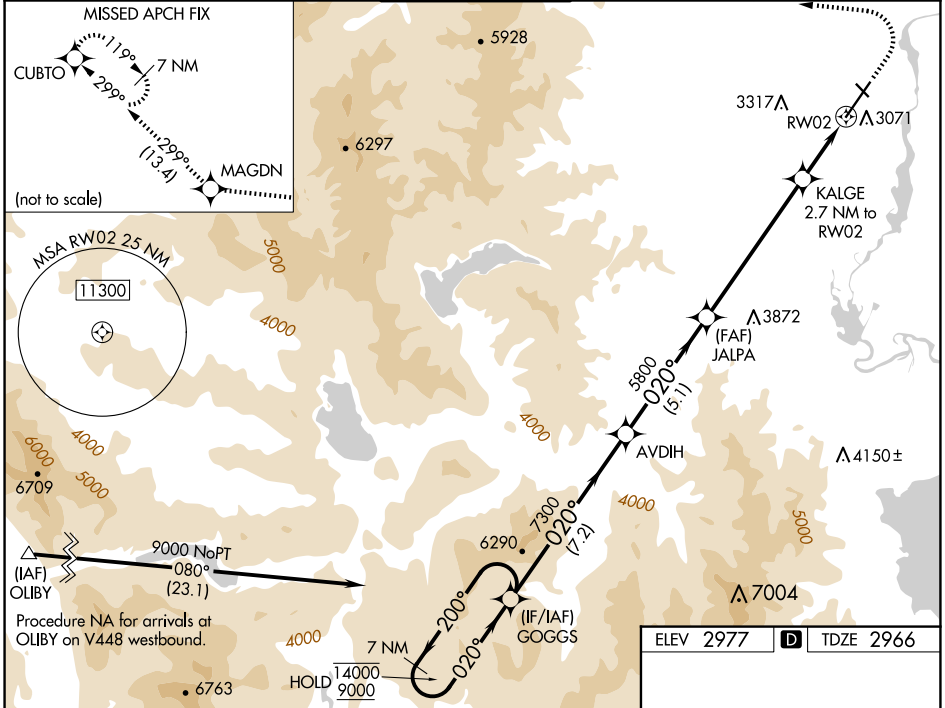


WAAS CH <b>70799</b> <b>W02A</b>	APP CRS <b>020°</b>	Rwy Idg <b>9007</b> TDZE <b>2966</b> Aprt Elev <b>2977</b>
--	------------------------	--

# RNAV (GPS) Z RWY 2

GLACIER PARK INTL (GPI)

RNP APCH - GPS.		MALSR AS	MISSED APPROACH: (Do not exceed 185K until CUBTO) Climb to 4200 then climbing left turn 9200 direct MAGDN and on track 299° to CUBTO and hold, continue climb-in-hold to 9200.			
For uncompensated Baro-VNAV systems, LNAV/VNAV NA below -24°C or above 54°C. For inop ALS, increase LNAV/VNAV all Cats visibility, and LNAV Cts C and D visibility to 1 3/8 SM. -15°C			ATIS <b>132.625</b>	SALT LAKE CENTER <b>127.075 244.875</b>	GLACIER TOWER ★ <b>124.55 (CTAF)</b>	GND CON <b>121.6</b>



7 NM Holding Pattern	GOGGS	AVDIH	JALPA	KALGE 2.7 NM to RW02	1.3 NM to RW02	RW02
14000 ← 200°	9000 → 020°	7300	5800	3880	1.4 NM	1.3 NM
GP 3.00°	TCH 51					
CATEGORY	A	B	C	D		
LPV DA		3166-1/2	200 (200-1/2)			
LNAV/VNAV DA		3468-1	502 (500-1)			
LNAV MDA	3440-1/2	474 (500-1/2)	3440-1	474 (500-1)		
<b>C</b> CIRCLING	3480-1 503 (600-1)	3580-1 603 (700-1)	3680-2 703 (800-2)	3760-2 1/2 783 (800-2 1/2)		

NW-1, 15 MAY 2025 to 12 JUN 2025

NW-1, 15 MAY 2025 to 12 JUN 2025