

APP CRS	Rwy Idg	<b>3510</b>
<b>301°</b>	TDZE	<b>2974</b>
	Apt Elev	<b>2977</b>

# RNAV (GPS) RWY 30

GLACIER PARK INTL (GPI)

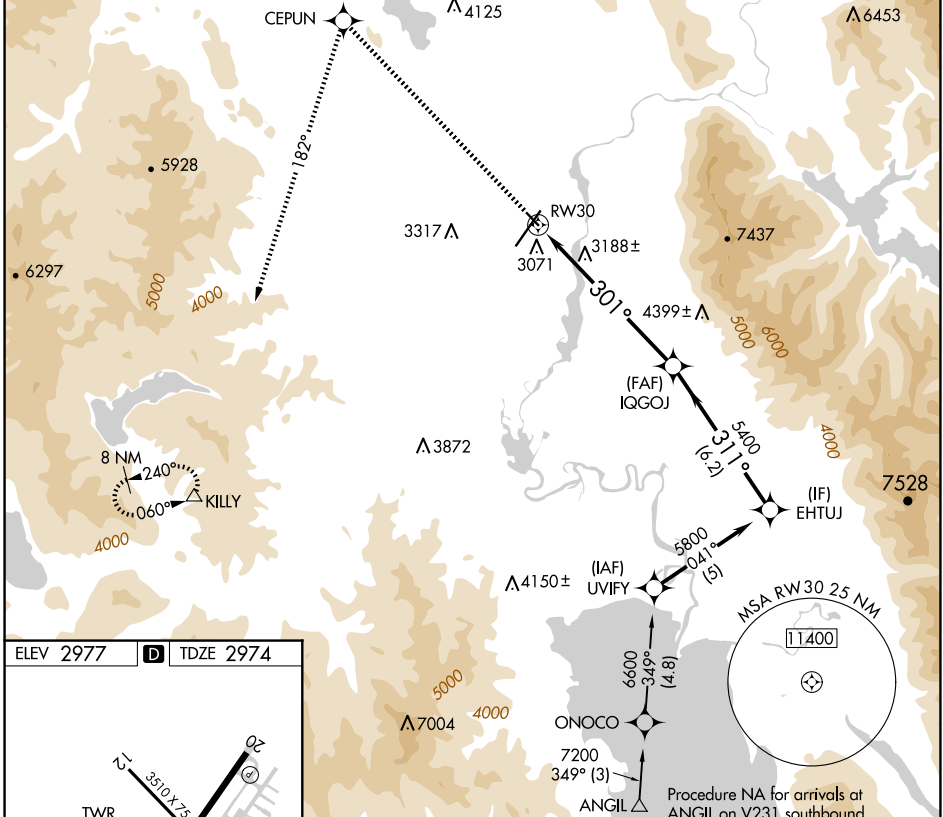
RNP APCH - GPS.

**⚠** Rwy 30 helicopter visibility reduction below 3/4 SM NA.

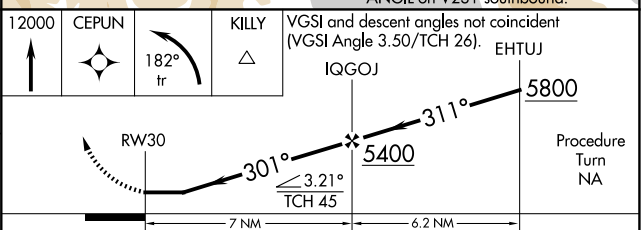
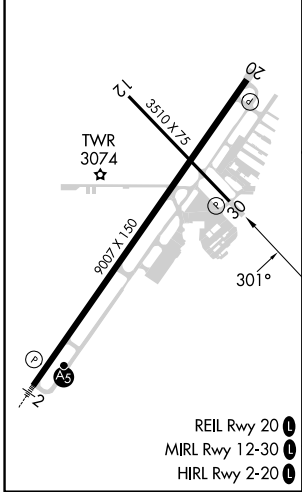
**⚠** -1.5°C

MISSED APPROACH: Climb to 12000 direct CEPUN and left turn via track 182° to KILLY and hold, continue climb-in-hold to 12000.

ATIS <b>132.625</b>	SALT LAKE CENTER <b>127.075 244.875</b>	GLACIER TOWER★ <b>124.55 (CTAF) 0</b>	GND CON <b>121.6</b>	UNICOM <b>122.95</b>
------------------------	--------------------------------------------	------------------------------------------	-------------------------	-------------------------



ELEV 2977	<b>D</b>	TDZE 2974
-----------	----------	-----------



CATEGORY	A	B	C	D
LNNAV MDA	3500-1	526 (600-1)	3500-1½	526 (600-1½)
<b>C</b> CIRCLING	3520-1 543 (600-1)	3580-1 603 (700-1)	3680-2 703 (800-2)	3760-2½ 783 (800-2½)

NW-1, 15 MAY 2025 to 12 JUN 2025

NW-1, 15 MAY 2025 to 12 JUN 2025