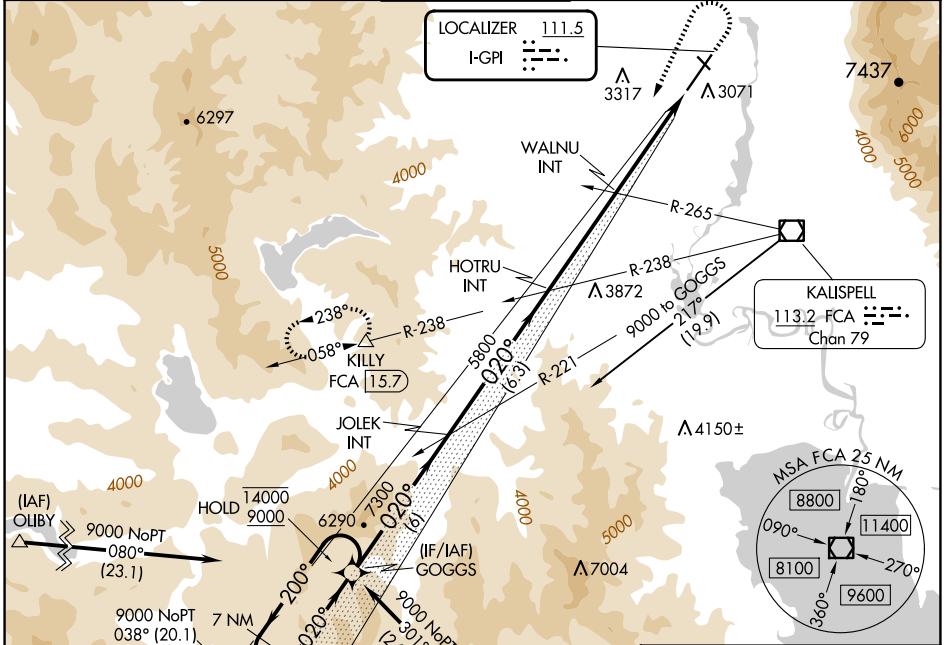


LOC I-GPI 111.5	APP CRS 020°	Rwy Idg TDZE Apt Elev 9007 2966 2977
---------------------------	------------------------	--

ILS or LOC RWY 2

GLACIER PARK INTL (GPI)

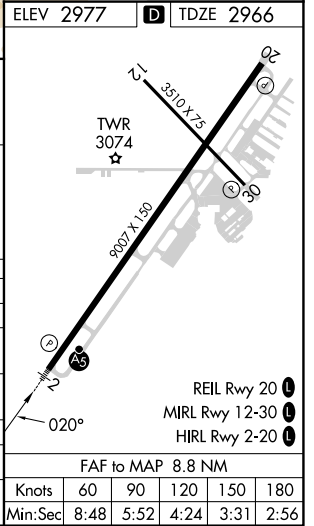
DME required. RNAV 1-GPS or RADAR required for procedure entry.		MALSR	MISSED APPROACH: Climb to 4100 then climbing left turn to 12000 on heading 190° and FCA VOR/DME R-238 to KILLY/15.7 DME and hold, continue climb-in-hold to 12000.	
Inop table does not apply to S-LOC 2 Cats C/D.				
-15°C				
ATIS 132.625	SALT LAKE CENTER 127.075 244.875	GLACIER TOWER* 124.55 (CTAF)	GND CON 121.6	UNICOM 122.95



NW-1, 15 MAY 2025 to 12 JUN 2025

NW-1, 15 MAY 2025 to 12 JUN 2025

7 NM Holding Pattern		JOLEK INT		HOTRU INT		WALNU INT		KILLY	
14000 ← 200°		7300		5800		4100		12000	
9000 020° →		020°		020°		hdg 190°		FCA R-238	
GS 3.00°		7300		*4440		*LOC only			
TCH 51		6 NM		6.3 NM		4.3 NM		4.5 NM	
CATEGORY	A	B	C	D					
S-ILS 2	3166-1/2				200 (200-1/2)				
S-LOC 2	4440-3/4		4440-1		4440-3		1474 (1500-3)		
	1474 (1500-3/4)		1474 (1500-1)						
CIRCLING	4440-1 1/4		4440-1 1/2		4440-3		1463 (1500-3)		
	1463 (1500-1 1/4)		1463 (1500-1 1/2)						
WALNU FIX MINIMUMS (DUAL VOR RECEIVERS REQUIRED)									
S-LOC 2	3520-1/2		554 (600-1/2)		3520-1 1/8		554 (600-1 1/8)		
CIRCLING	3520-1		3580-1		3680-2		3760-2 1/2		
	543 (600-1)		603 (700-1)		703 (800-2)		783 (800-2 1/2)		



FAF to MAP 8.8 NM					
Knots	60	90	120	150	180
Min:Sec	8:48	5:52	4:24	3:31	2:56