

WAAS CH 53709 W07A	APP CRS 071°	Rwy Idg TDZE Apt Elev	5371 3702 3732
--	------------------------	-----------------------------	---

RNAV (GPS) RWY 7

GOODING MUNI (GNG)

RNP APCH - GPS.

▼ For uncompensated Baro-VNAV systems, procedure NA below -22°C or above 54°C.
▲

MISSED APPROACH: Climb to 7400 direct CABTT and on track 037° to KINZE and hold.

AWOS-3PT
124.175

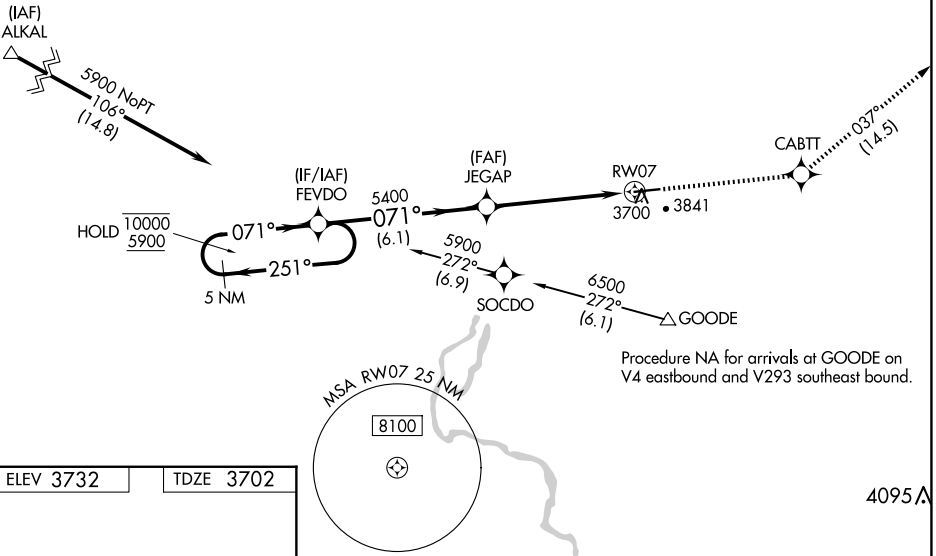
SALT LAKE CENTER
118.05 363.0

UNICOM
122.8 (CTAF) 0

MISSED APCH FIX



Procedure NA for arrivals at ALKAL on V253 northwest bound and T470 westbound.



Procedure NA for arrivals at GOODE on V4 eastbound and V293 southeast bound.

ELEV 3732 TDZE 3702

4095 A

VGSi and RNAV glidepath not coincident (VGSi Angle 2.75/TCH 40). 5 NM Holding Pattern FEVDO 10000 ← 251° 5900 → 071° GP 3.00° TCH 45 1.4% UP → 5371 X 75 071°		7400 CABTT tr 037° KINZE		
JEGAP 5400 0.9 NM to RW07 RW07				
6.1 NM 4.4 NM 0.9				
CATEGORY	A	B	C	D
LPV DA		3952- ³ / ₄	250 (300- ³ / ₄)	
LNNAV/VNAV DA		3952- ³ / ₄	250 (300- ³ / ₄)	
LNNAV MDA	3960-1	258 (300-1)	3960- ³ / ₄	258 (300- ³ / ₄)

REIL Rwy 7 0
MIRL Rwy 7-25 0

GOODING MUNI (GNG) RNAV (GPS) RWY 7

NW-1, 15 MAY 2025 to 12 JUN 2025

NW-1, 15 MAY 2025 to 12 JUN 2025