

WAAS CH 77542 W34A	APP CRS 339°	Rwy Idg 7003 TDZE 3916 Apt Elev 3942
--	------------------------	---

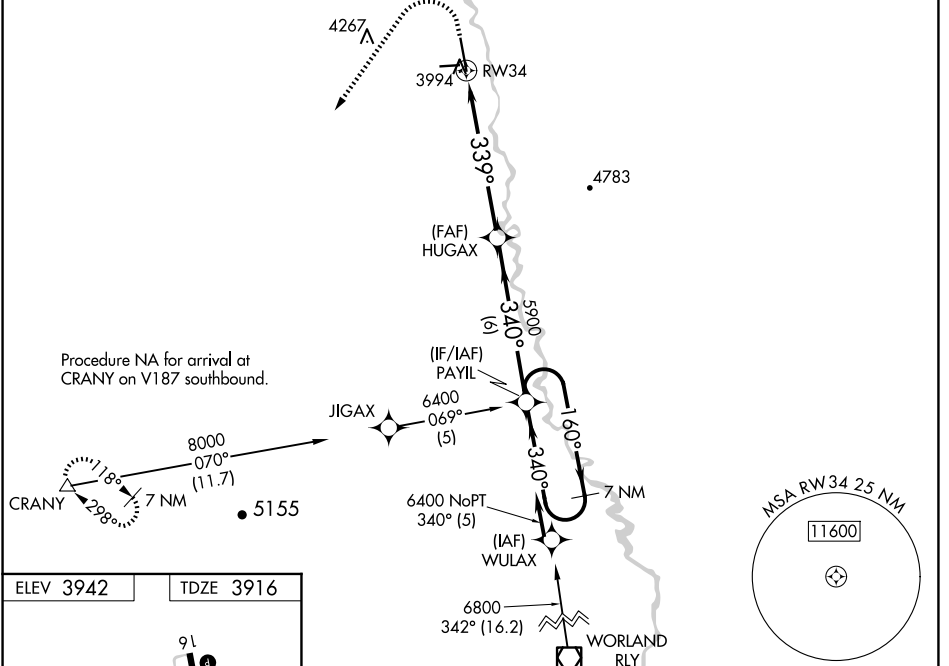
RNAV (GPS) RWY 34

SOUTH BIG HORN COUNTY (GEY)

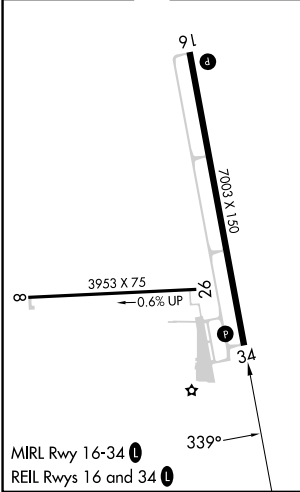
⚠ Baro-VNAV NA when using Cowley/Lovell/Byron altimeter setting. For uncompensated Baro-VNAV systems, LNAV/VNAV NA below -26°C (-14°F) or above 51°C (124°F). DME/DME RNP-0.3 NA. When local altimeter setting not received, use Cowley/Lovell/Byron altimeter setting and increase LPV DA to 4253 feet and LNAV/VNAV DA to 4327 feet. Increase LPV and LNAV/VNAV visibility all Cats 3/8 SM. Increase all MDAs 100 feet and LNAV visibility Cat B 1/4 SM, Cats C/D 1/2 SM and Circling Cat B 1/4 SM. VDP NA with Cowley/Lovell/Byron altimeter setting.

MISSED APPROACH: Climb to 4400 then climbing left turn to 9000 direct CRANY and hold, continue climb-in-hold 9000.

ASOS 135.325	SALT LAKE CENTER 127.75 351.9	CTAF 122.9
------------------------	---	----------------------



ELEV 3942	TDZE 3916
-----------	-----------



4400	9000	CRANY	PAYIL 7 NM Holding Pattern	
*LNAV only.		*2.1 NM to RWY 34	GP 3.00° TCH 50	
RWY 34		HUGAX 5900	PAYIL 7 NM Holding Pattern	
-2.1 NM		4 NM	6 NM	
CATEGORY	A	B	C	D
LPV DA	4166-3/4		250 (300-3/4)	
LNAV/VNAV DA	4240-1		324 (300-1)	
LNAV MDA	4640-1 724 (700-1)		4640-2 724 (700-2)	
C CIRCLING	4640-1 698 (700-1)	4700-1 758 (800-1 1/4)	5320-3 1378 (1400-3)	5460-3 1518 (1600-3)

NW-1, 15 MAY 2025 to 12 JUN 2025

NW-1, 15 MAY 2025 to 12 JUN 2025