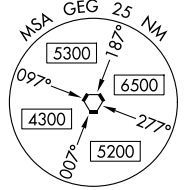
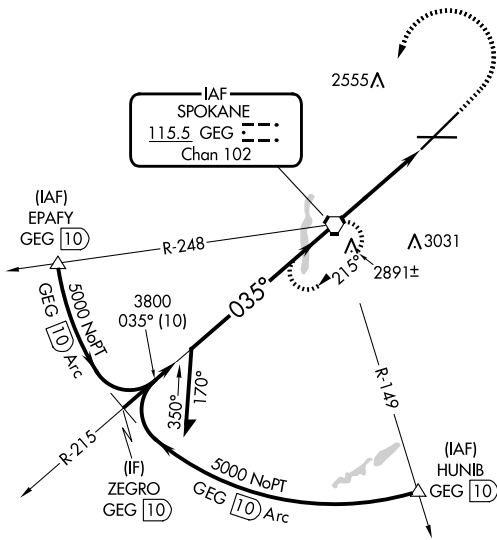


| | | |
|--|------------------------|---|
| VORTAC GEG 115.5 Chan 102 | APP CRS 035° | Rwy Idg 11002 TDZE 2385 Aprt Elev 2385 |
|--|------------------------|---|

VOR RWY 3

SPOKANE INTL (GEG)

| | | | | |
|---|--|--|---|---------------------------------------|
| <p>⚠ Circling NA for Cat E southeast of Rwy 3-21. For inop ALS, increase S-3 Cat E visibility to 1 1/4 SM.</p> | ALSIF-2 | MISSED APPROACH: Climb to 3200 then climbing left turn to 4200 direct GEG VORTAC and hold, continue climb-in-hold to 4200. | | |
| | <p>ATIS 124.325 254.375</p> | <p>SPOKANE APP CON 123.75 282.25 (205°-025°) 133.35 263.0 (026°-204°)</p> | <p>SPOKANE TOWER 118.3 278.3</p> | <p>GND CON 121.9 348.6</p> |



NW-1, 15 MAY 2025 to 12 JUN 2025

NW-1, 15 MAY 2025 to 12 JUN 2025

ELEV 2385 TDZE 2385

3200 4200 GEG

GEG 2.5

GEG 4.1

035°

0.5% DOWN

0.8% UP

11002 X 150

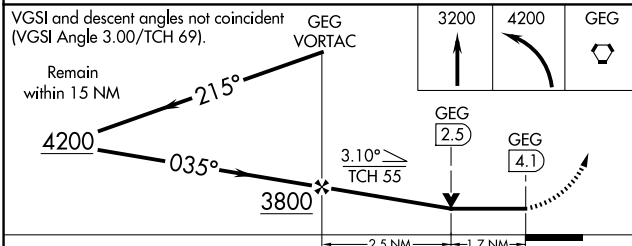
8199 X 150

TWR 2651

TDZ/CL Rws 3 and 21
REIL Rws 8 and 26
HIRL Rwy 3-21
MIRL Rwy 8-26

FAF to MAP 4.1 NM

| | | | | | |
|---------|------|------|------|------|------|
| Knots | 60 | 90 | 120 | 150 | 180 |
| Min:Sec | 4:06 | 2:44 | 2:03 | 1:38 | 1:22 |



| CATEGORY | A | B | C | D | E |
|-------------------|---------|---------------|-------------------------------|-----------------|--------------|
| S-3 | 2980/24 | 595 (600-1/2) | 2980-1 1/4 | 595 (600-1 1/4) | |
| C CIRCLING | 2980-1 | 595 (600-1) | 3180-2 1/4 795 (800-2 1/4) | 3380-3 | 995 (1000-3) |