

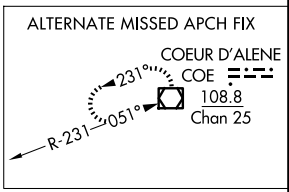
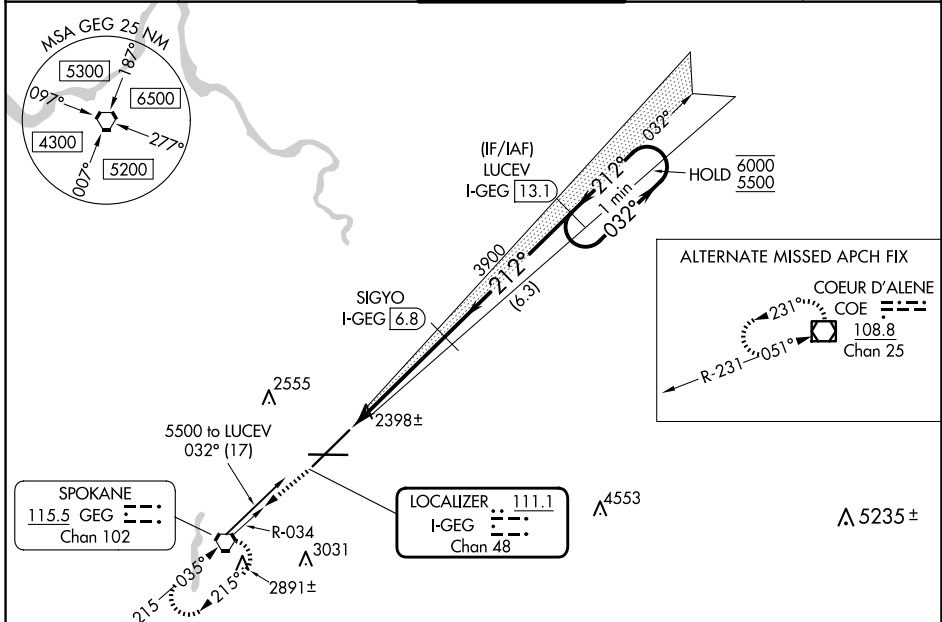
LOC/DME I-GEG 111.1 Chan 48	APP CRS 212°	Rwy Idg 11002 TDZE 2346 Apt Elev 2385
---	------------------------	--

ILS RWY 21 (SA CAT I)

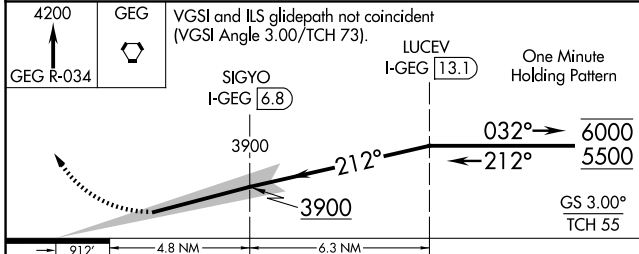
SPOKANE INTL (GEG)

DME required. Requires specific OPSPEC, MSPEC, or LOA approval.		ALSF-2 	MISSED APPROACH: Climb to 4200 on GEG VORTAC R-034 to GEG VORTAC and hold, continue climb-in-hold to 4200.
--	--	------------	--

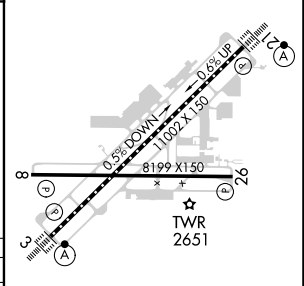
ATIS 124.325 254.375	SPOKANE APP CON 123.75 282.25 (205°-025°) 133.35 263.0 (026°-204°)	SPOKANE TOWER 118.3 278.3	GND CON 121.9 348.6	CLNC DEL 127.55
--------------------------------	--	-------------------------------------	-------------------------------	---------------------------



SPOKANE 115.5 GEG Chan 102	LOCALIZER I-GEG Chan 48	△ 4553	△ 5235±
----------------------------------	-------------------------------	--------	---------



ELEV 2385	D TDZE 2346
-----------	--------------------



4200 ↑ GEG R-034	GEG 	VGSI and ILS glidepath not coincident (VGSI Angle 3.00/TCH 73).	LUCEV I-GEG [13.1]	One Minute Holding Pattern										
<table border="1"> <tr> <td>CATEGORY</td> <td>A</td> <td>B</td> <td>C</td> <td>D</td> </tr> <tr> <td>S-ILS 21</td> <td colspan="4">RA 197/14 150 DA 2496</td> </tr> </table>					CATEGORY	A	B	C	D	S-ILS 21	RA 197/14 150 DA 2496			
CATEGORY	A	B	C	D										
S-ILS 21	RA 197/14 150 DA 2496													

SA CATEGORY I ILS - SPECIAL AIRCREW & AIRCRAFT CERTIFICATION REQUIRED

TDZ/CL Rwy 3 and 21
REIL Rwy 8 and 26
HIRL Rwy 3-21
MIRL Rwy 8-26

NW-1, 15 MAY 2025 to 12 JUN 2025

NW-1, 15 MAY 2025 to 12 JUN 2025