

WAAS CH 40423 W12A	APP CRS 126°	Rwy Idg TDZE Apt Elev	5704 2458 2458
---------------------------------	------------------------	-----------------------------	---

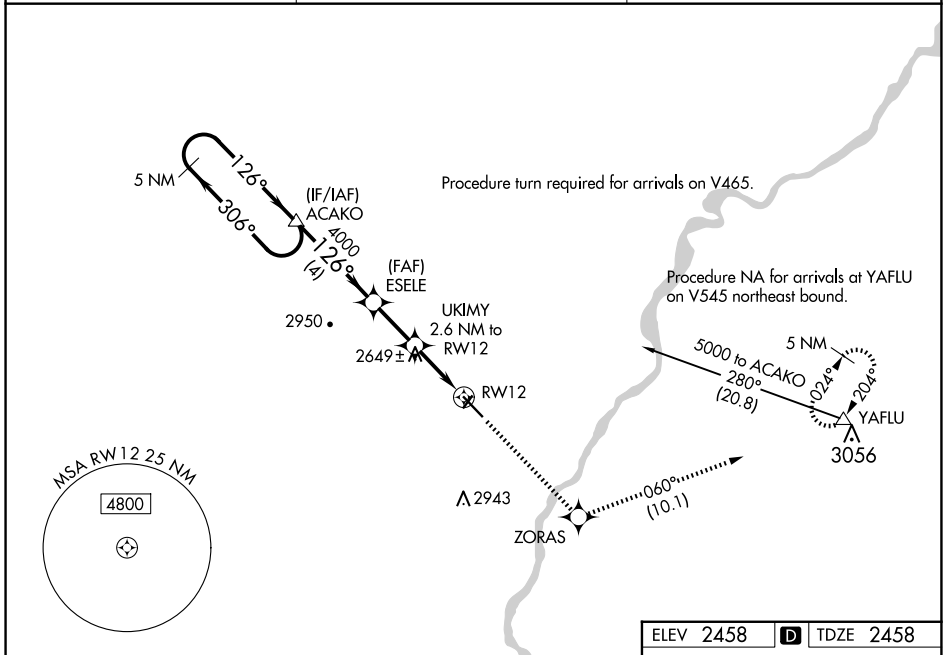
RNAV (GPS) RWY 12

DAWSON COMMUNITY (GDV)

RNP APCH.
 ⚠ For uncompensated Baro-VNAV systems, LNAV/VNAV NA below -19°C or above 28°C. When local climeter setting not received, procedure NA. Rwy 12 helicopter visibility reduction below ¼ SM NA.

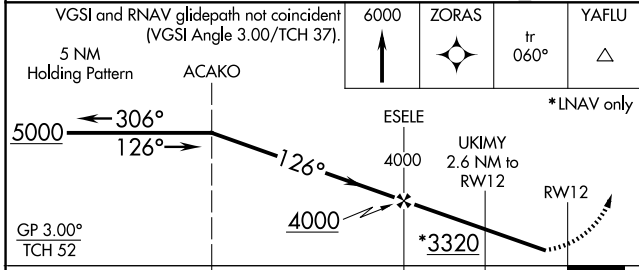
MISSED APPROACH: Climb to 6000 direct ZORAS and on track 060° to YAFLU and hold, continue climb-in-hold to 6000.

AWOS-3PT 135.075	SALT LAKE CENTER 126.85 305.2	UNICOM 122.8 (CTAF) 📻
----------------------------	---	--



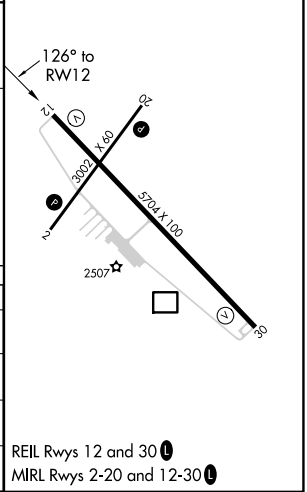
NW-1, 15 MAY 2025 to 12 JUN 2025

NW-1, 15 MAY 2025 to 12 JUN 2025



ELEV 2458	D TDZE 2458
-----------	--------------------

VGSI and RNAV glidepath not coincident (VGSI Angle 3.00/TCH 37).				
5 NM Holding Pattern ACACO		6000	ZORAS	YAFLU
5000 ← 306° → 126° →		↑	☉	tr 060° △
GP 3.00° TCH 52		4000	UKIMY 2.6 NM to RWY 12	*RNAV only
4000		*3320	RWY 12	
← 4 NM →		← 2.1 NM →	← 2.6 NM →	
CATEGORY	A	B	C	D
LPV DA		2708-1	250 (300-1)	
LNAV/VNAV DA		2708-1	250 (300-1)	
LNAV MDA	2900-1	442 (500-1)	2900-1 3/8	442 (500-1 3/8)
CIRCLING	2900-1 442 (500-1)	2920-1 462 (500-1)	3280-2 1/2 822 (900-2 1/2)	3280-2 3/4 822 (900-2 3/4)



REIL Rws 12 and 30 **📻**
 MIRL Rws 2-20 and 12-30 **📻**