

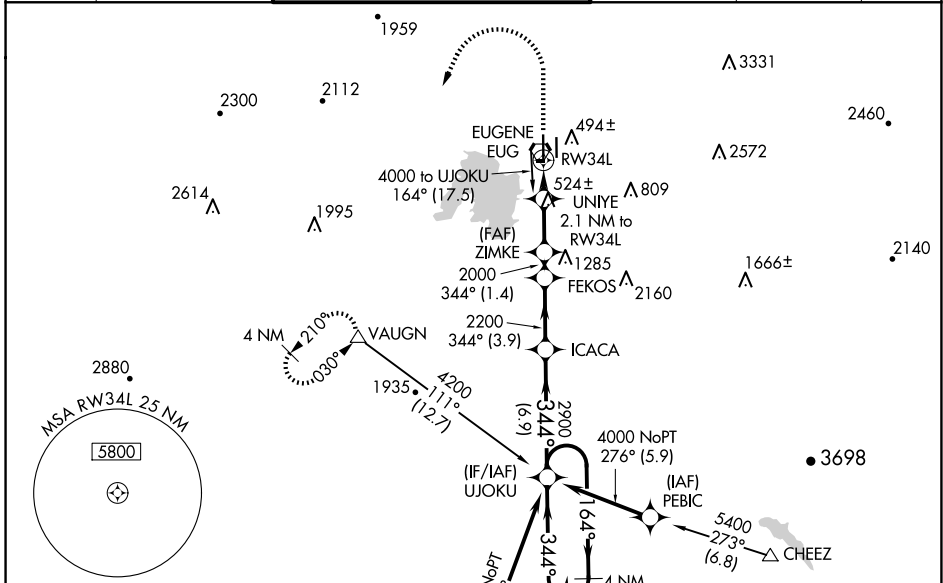
WAAS CH 45600 W34A	APP CRS 344°	Rwy Idg TDZE Apt Elev	8009 368 374
--	------------------------	-----------------------------	---

RNAV (GPS) Y RWY 34L

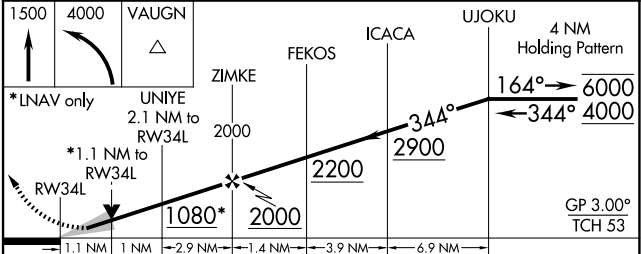
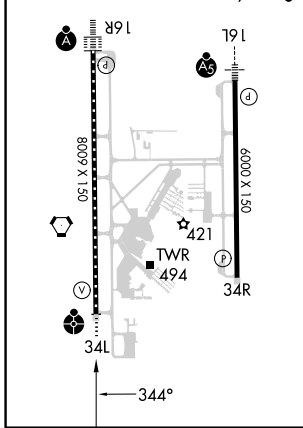
MAHLON SWEET FLD (EUG)

RNP APCH.	ODALS	MISSED APPROACH: Climb to 1500, then climbing left turn to 4000 direct VAUGN and hold.
<p>Simultaneous approach authorized. LNAV procedure NA during simultaneous operations. Use of FD or AP providing RNAV track guidance required during simultaneous operations. For uncompensated Baro-VNAV systems, LNAV/VNAV NA below -10°C or above 54°C. For inop ALS increase LNAV/VNAV visibility Cats A-B to RVR 4500. Inop table does not apply to LPV minimums.</p>		

ATIS 125.225	CASCADE APP CON★ 119.6 348.7	EUGENE TOWER★ 118.9 (CTAF) 371.9 (Rwy 16R/34L) 124.15 371.9 (Rwy 16L/34R)	GND CON 121.7 269.5	CLNC DEL 121.7 269.5	UNICOM 122.95
------------------------	--	--	-------------------------------	--------------------------------	-------------------------



ELEV 374	D	TDZE 368
HIRL Rws 16L-34R and 16R-34L TDZ/CL Rwy 16R REIL Rwy 34R		



CATEGORY	A	B	C	D
LPV DA		568/40	200 (200-3/4)	
LNAV/VNAV DA		657/40	289 (300-3/4)	
LNAV MDA	760/40	392 (400-3/4)	760/50	392 (400-1)
CIRCLING	820-1 446 (500-1)	840-1 466 (500-1)	1000-1 3/4 626 (700-1 3/4)	1140-2 1/2 766 (800-2 1/2)

NW-1, 15 MAY 2025 to 12 JUN 2025

NW-1, 15 MAY 2025 to 12 JUN 2025