

WAAS CH 69517 W35A	APP CRS 352°	Rwy Idg TDZE 250 Apt Elev 250	5900
--	------------------------	---	-------------

RNAV (GPS) RWY 35

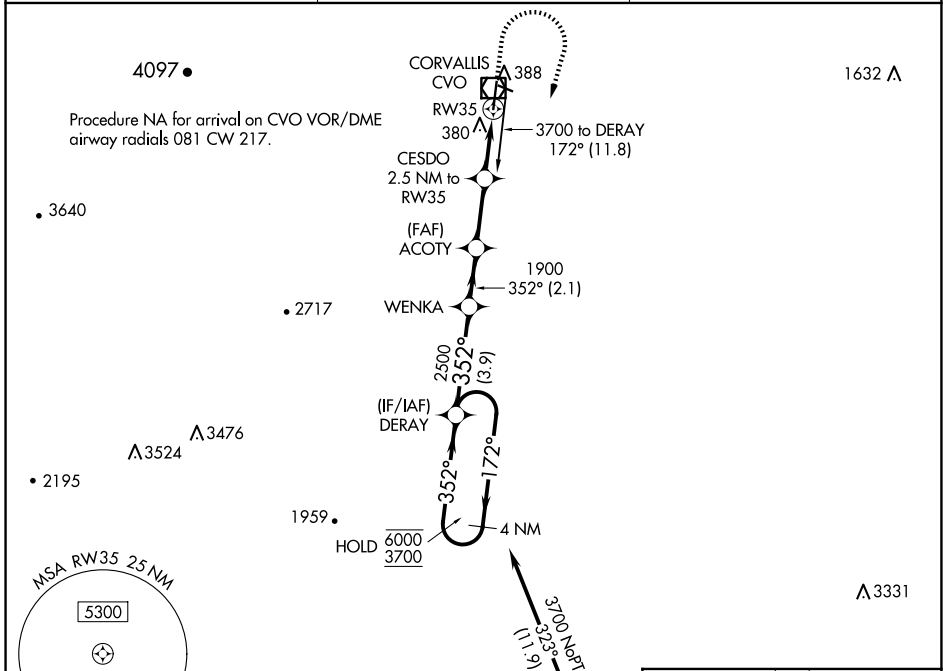
CORVALLIS MUNI (CVO)

RNP APCH - GPS.

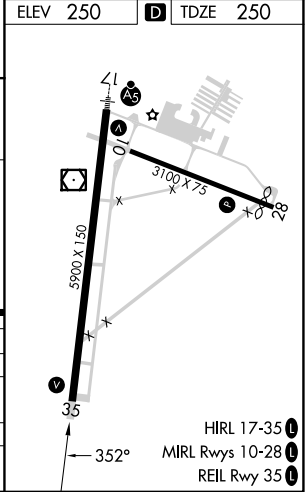
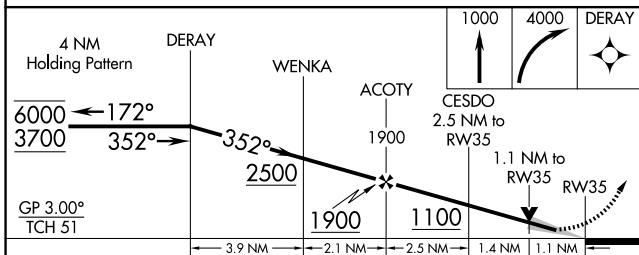
⚠ Circling Rwy 28 NA at night. For uncompensated Baro-VNAV systems, LNAV/VNAV NA below -1.5°C or above 54°C. When local altimeter setting not received, procedure NA.

MISSED APPROACH: Climb to 1000 then climbing right turn to 4000 direct DERAY and hold, continue climb-in-hold to 4000.

AWOS-3PT 135.775	CASCADE APP CON * 127.5 348.7	UNICOM 123.075 (CTAF) 0
----------------------------	---	-----------------------------------



ELEV 250	TDZE 250
----------	----------



CATEGORY	A	B	C	D
LPV DA		500-3/4	250 (300-3/4)	
LNAV/VNAV DA		551-7/8	301 (400-7/8)	
LNAV MDA	640-1	390 (400-1)	640-1 1/8	390 (400-1 1/8)
C CIRCLING	720-1 470 (500-1)	740-1 490 (500-1)	920-1 3/4 670 (700-1 3/4)	1080-2 3/4 830 (900-2 3/4)

NW-1, 15 MAY 2025 to 12 JUN 2025

NW-1, 15 MAY 2025 to 12 JUN 2025