

CUT BANK, MONTANA

AL-484 (FAA)

24305

WAAS CH 93537 W14A	APP CRS 139°	Rwy Idg TDZE Apt Elev	5300 3858 3858
--	------------------------	-----------------------------	---

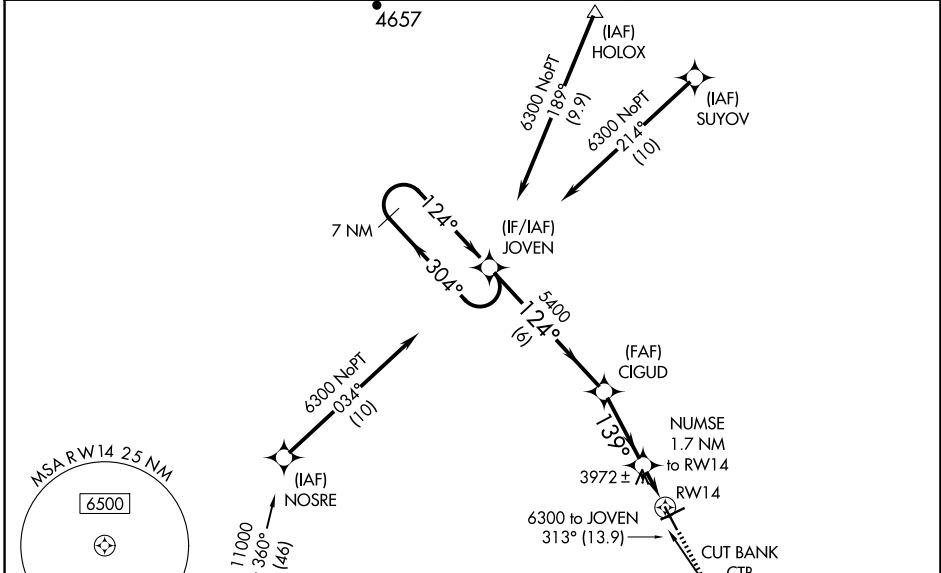
RNAV (GPS) RWY 14

CUT BANK INTL (CTB)

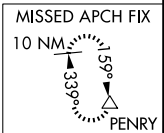
⚠ For uncompensated Baro-VNAV systems, LNAV/VNAV NA below -25°C (-13°F) or above 51°C (124°F).
❄ -29°C DME/DME RNP-0.3 NA.

MISSED APPROACH: Climb to 4400 then climbing right turn to 9000 direct PENRY and hold.

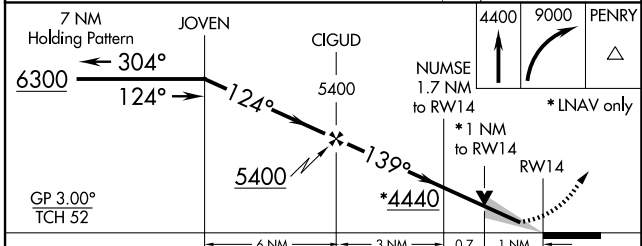
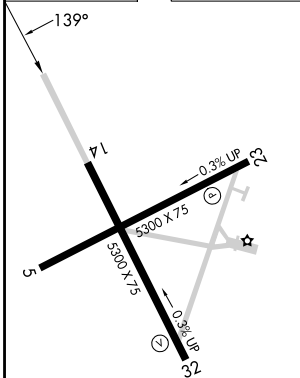
ASOS 119.025	SALT LAKE CITY CENTER 133.4 285.4	UNICOM 123.0 (CTAF) 0
------------------------	---	---------------------------------



Procedure NA for arrivals at GAPAR on V536 eastbound.



ELEV 3858	TDZE 3858
-----------	-----------



CATEGORY	A	B	C	D
LPV DA		4058-1	200 (200-1)	
LNAV/VNAV DA		4108-1	250 (300-1)	
LNAV MDA	4240-1	382 (400-1)	4240-1½	382 (400-1½)
C CIRCLING	4280-1 422 (500-1)	4320-1 462 (500-1)	4400-1½ 542 (600-1½)	4620-2½ 762 (800-2½)

REIL Rwy 32 **0**
MIRL Rwy 5-23 and 14-32 **0**

CUT BANK, MONTANA
Orig-B 07DEC17

48°37'N-112°23'W

RNAV (GPS) RWY 14

CUT BANK INTL (CTB)

NW-1, 15 MAY 2025 to 12 JUN 2025

NW-1, 15 MAY 2025 to 12 JUN 2025