

VOR/DME DDY	APP CRS	Rwy Idg	10165
116.2	203°	TDZE	5330
Chan 109		Apt Elev	5344

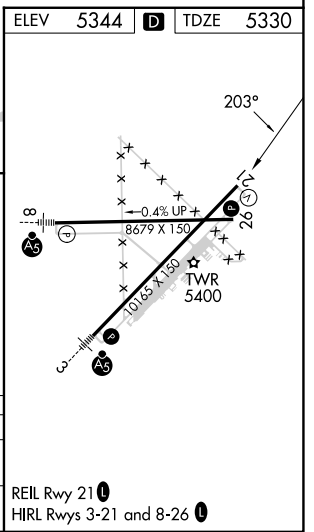
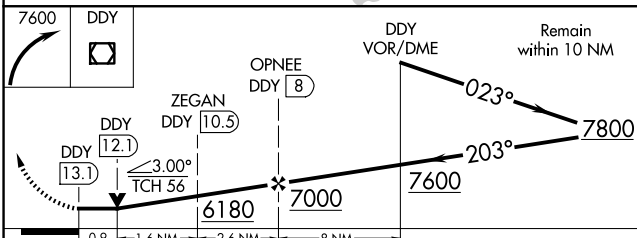
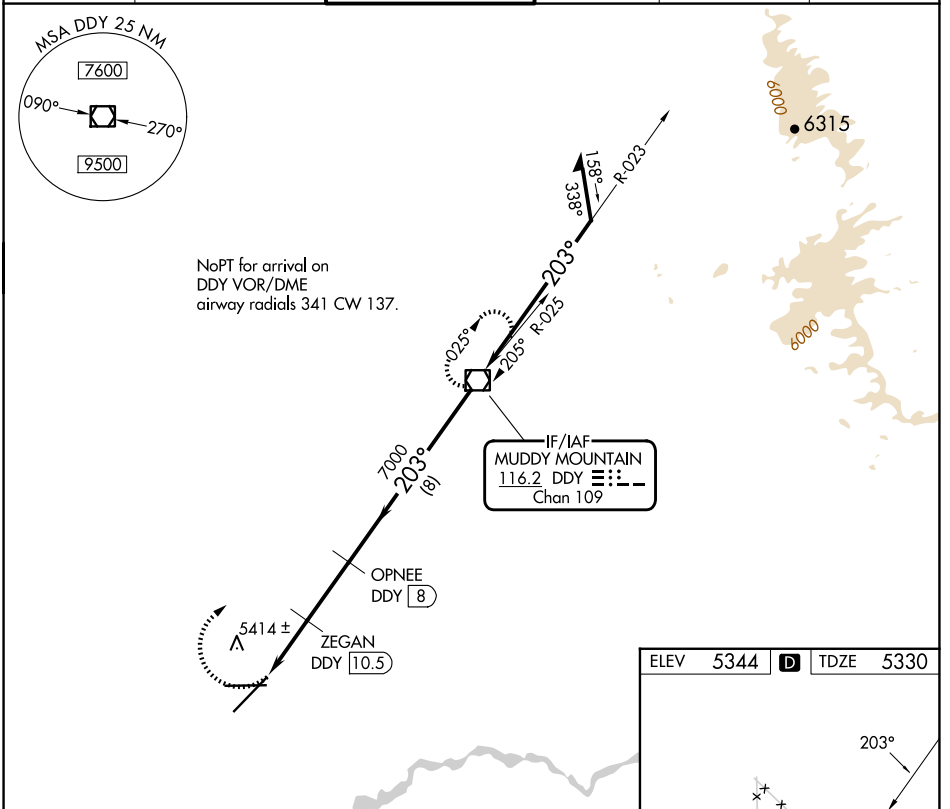
# VOR/DME RWY 21

CASPER/NATRONA COUNTY INTL (CPR)

**V** VDP NA with Douglas altimeter setting. When local altimeter setting not received, use Douglas altimeter setting and increase all MDAs 180 feet, increase S-21 visibility Cats C/D ½ SM, Circling Cat C ½ SM and Cat D ¼ SM.

**MISSED APPROACH:** Climbing right turn to 7600 direct DDY VOR/DME and hold.

ATIS	CASPER APP CON *	CASPER TOWER *	GND CON	CLNC DEL	UNICOM
126.15	120.65 354.1	118.3 (CTAF) 0 257.8	121.9	121.9 257.8	122.95



CATEGORY	A	B	C	D
S-21	5680-1 350 (400-1)			
CIRCLING	5740-1 396 (400-1)	5800-1 456 (500-1)	5860-1½ 516 (600-1½)	6200-2¾ 856 (900-2¾)

NW-1, 15 MAY 2025 to 12 JUN 2025

NW-1, 15 MAY 2025 to 12 JUN 2025