

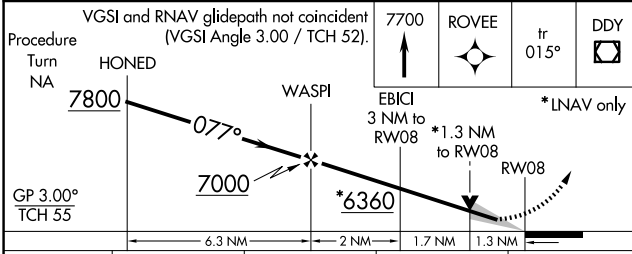
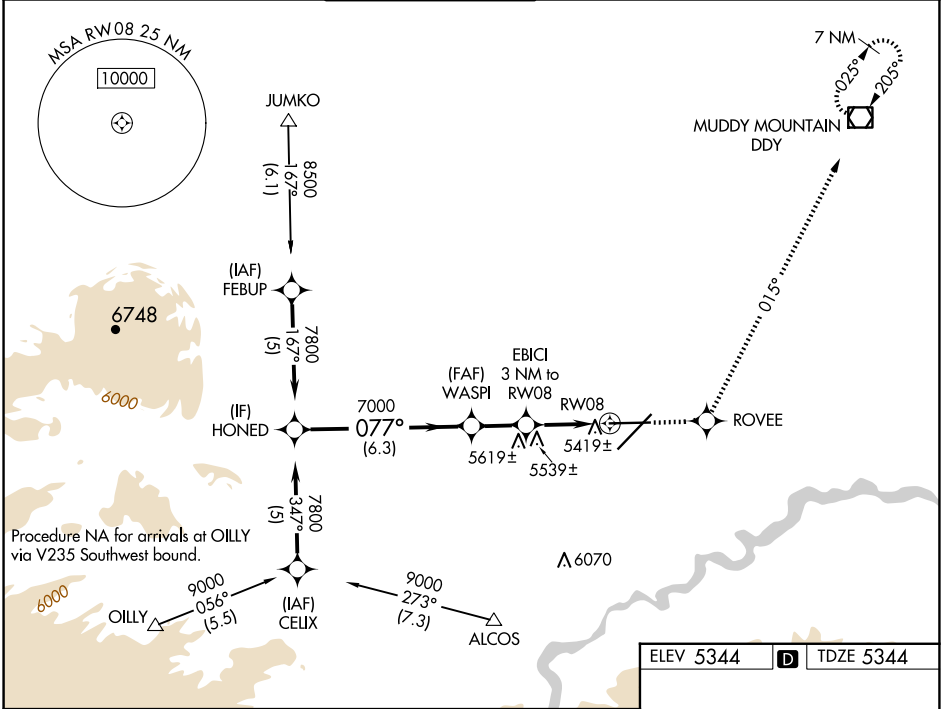
WAAS CH 86306 W08A	APP CRS 077°	Rwy Idg 8679 TDZE 5344 Apt Elev 5344
--	------------------------	---

RNAV (GPS) RWY 8

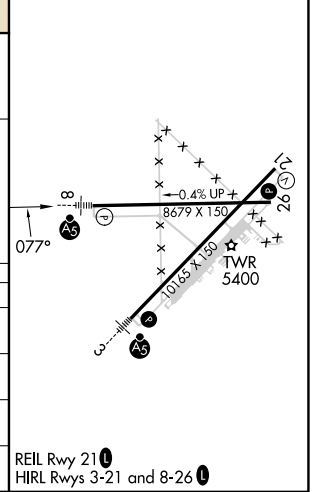
CASPER/NATRONA COUNTY INTL (CPR)

<p>▼ For uncompensated Baro-VNAV systems, LNAV/VNAV NA below -25°C (-13°F) or above 38°C (100°F). ▲ DME/DME RNP-0.3 NA.</p>	<p>MALSR</p>	<p>MISSED APPROACH: Climb to 7700 direct ROVEE and via track 015° to DDY VOR/DME and hold.</p>
---	--------------	--

ATIS 126.15	CASPER APP CON * 120.65 354.1	CASPER TOWER * 118.3 (CTAF) 0 257.8	GND CON 121.9	CLNC DEL 121.9 257.8	UNICOM 122.95
-----------------------	---	---	-------------------------	--------------------------------	-------------------------



ELEV 5344	D	TDZE 5344
-----------	---	-----------



CATEGORY	A	B	C	D
LPV DA		5594/24	250 (300-½)	
LNAV/VNAV DA		5689/40	345 (400-¾)	
LNAV MDA	5800/24	456 (500-½)	5800/40 456 (500-¾)	5800/50 456 (500-1)
CIRCLING	5800-1	456 (500-1)	5860-1½ 516 (600-1½)	6200-2¾ 856 (900-2¾)

NW-1, 15 MAY 2025 to 12 JUN 2025

NW-1, 15 MAY 2025 to 12 JUN 2025