

WAAS CH 70608 W06A	APP CRS 051°	Rwy Idg 7400 TDZE 2291 Apt Elev 2320
--	------------------------	---

RNAV (GPS) RWY 6

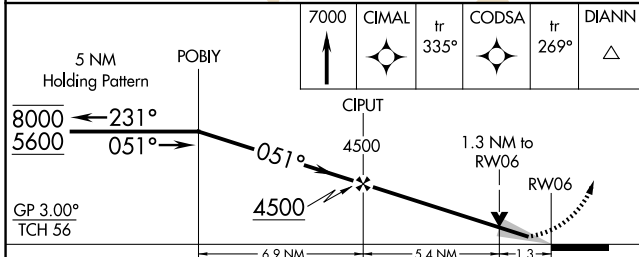
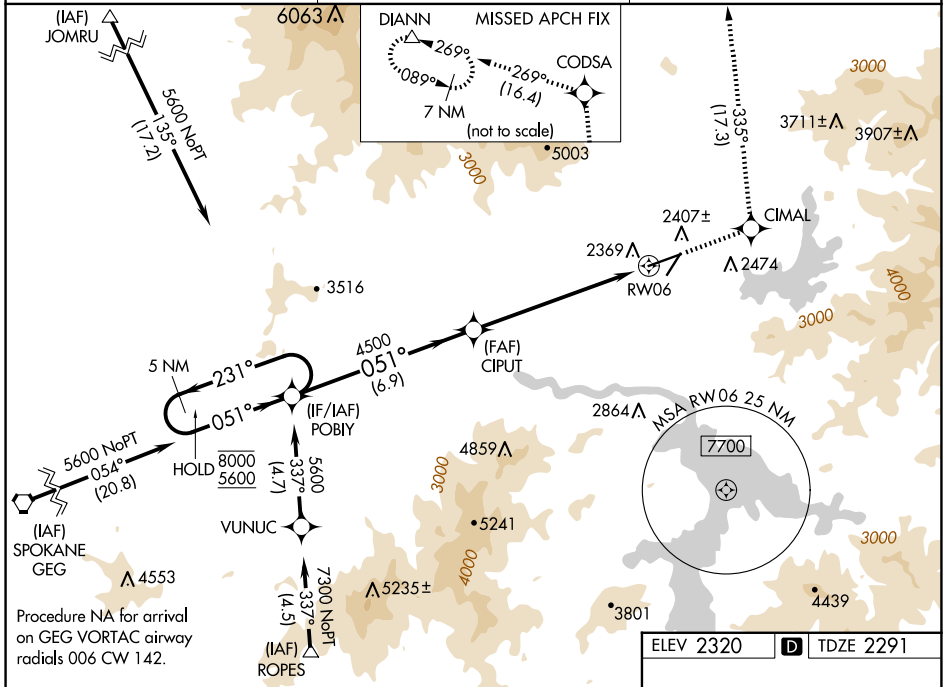
COEUR D'ALENE/PAPPY BOYINGTON FLD (COE)

RNP APCH - GPS.

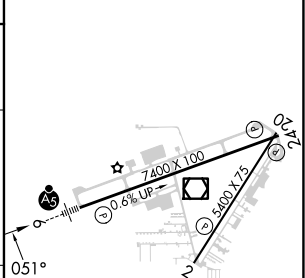
MAJRS

MISSED APPROACH: Climb to 7000 direct CIMAL and on track 335° to CODSA and on track 269° to DIANN and hold.

AWOS-3PT 135.075	SPOKANE APP CON 132.1 263.0	UNICOM 122.8 (CTAF)
----------------------------	---------------------------------------	-------------------------------



ELEV 2320	D	TDZE 2291
-----------	----------	-----------



CATEGORY	A	B	C	D
LPV DA		2491-1/2	200 (200-1/2)	
LNAV/VNAV DA		2654-3/4	363 (400-3/4)	
LNAV MDA	2740-1/2	449 (500-1/2)	2740-1	449 (500-1)
CIRCLING	2740-1 420 (500-1)	2880-1 560 (600-1)	3020-2 700 (700-2)	3180-2 3/4 860 (900-2 3/4)

MIRL Rwy 2-20

HIRL Rwy 6-24

REIL Rws 2 and 24

NW-1, 15 MAY 2025 to 12 JUN 2025

NW-1, 15 MAY 2025 to 12 JUN 2025