

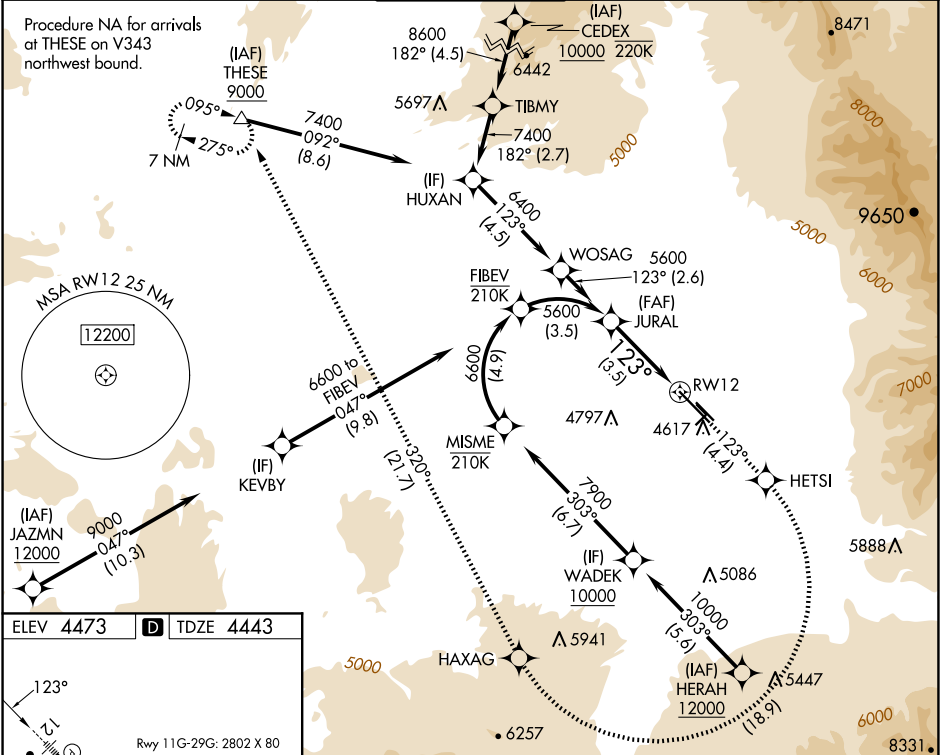
APP CRS 123°	Rwy Idg TDZE Apt Elev	8994 4443 4473
------------------------	-----------------------------	---

RNAV (RNP) Z RWY 12

BOZEMAN YELLOWSTONE INTL (BZN)

RNP AR APCH - GPS.		MALSR	MISSED APPROACH: Climb to 10000 on track 123° to HETSI, and right turn to HAXAG, and on track 320° to THESE and hold.
<p>▼ For uncompensated Baro-VNAV systems, procedure NA below -29°C or above 54°C. When local altimeter setting not received, procedure NA. For inop ALS, increase RNP 0.10 visibility to 7/8 SM and RNP 0.30 visibility to 1 SM.</p>			

ATIS 135.425	BIG SKY APP CON ★ 118.975 226.675	BOZEMAN TOWER ★ 118.2 (CTAF) 0	GND CON 121.8	UNICOM 122.95
------------------------	---	--	-------------------------	-------------------------

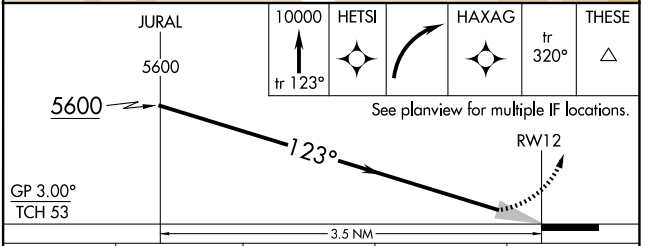


ELEV 4473	D	TDZE 4443
-----------	---	-----------

Rwy 11G-29G: 2802 X 80

TWR

REIL Rwy 30
HIRL Rwy 12-30
MIRL Rwy 11-29



CATEGORY	A	B	C	D
RNP 0.10 DA		4723-1/2	280 (300-1/2)	
RNP 0.30 DA		4795-5/8	352 (400-5/8)	

AUTHORIZATION REQUIRED

NW-1, 15 MAY 2025 to 12 JUN 2025

NW-1, 15 MAY 2025 to 12 JUN 2025