

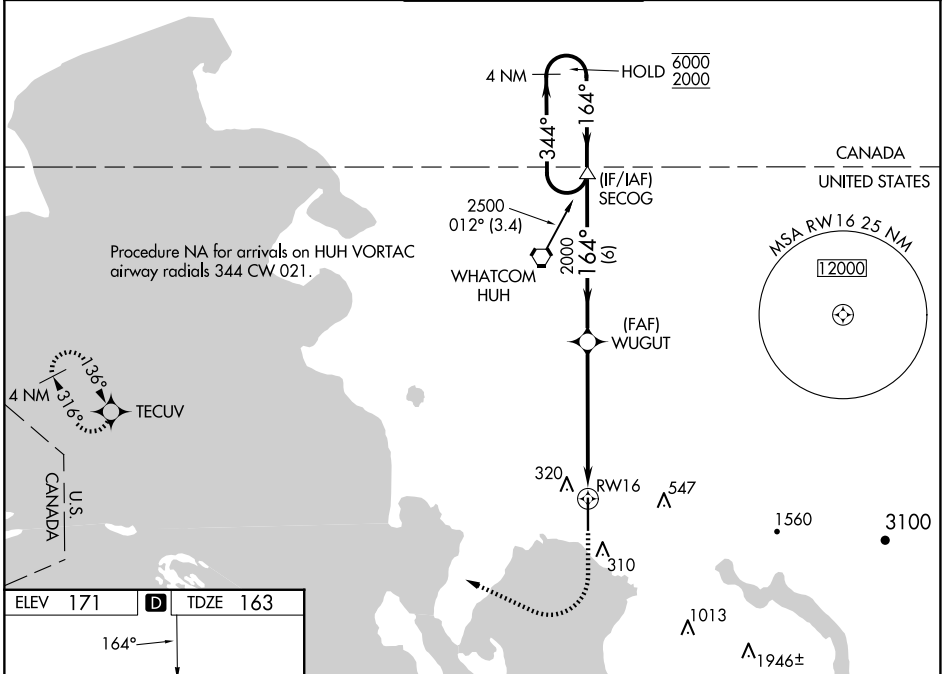
WAAS CH <b>45999</b> <b>W16A</b>	APP CRS <b>164°</b>	Rwy Idg TDZE <b>163</b> Apt Elev <b>171</b>
--	------------------------	---

# RNAV (GPS) Y RWY 16

BELLINGHAM INTL (BLI)

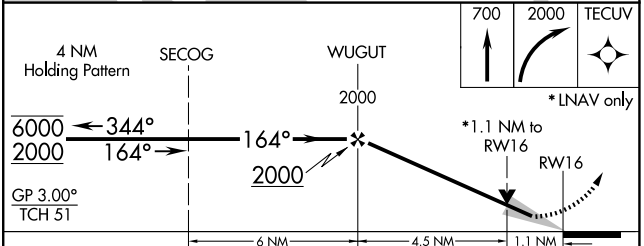
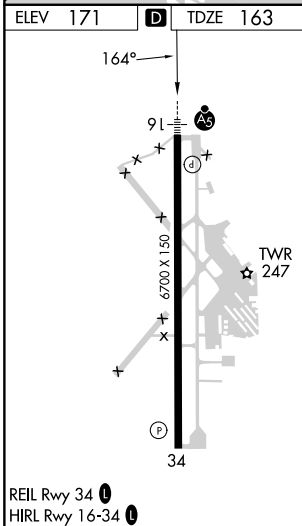
RNP APCH. <b>A</b>	MALSR 	MISSED APPROACH: Climb to 700 then climbing right turn to 2000 direct TECUV and hold.
For uncompensated Baro-VNAV systems, LNAV/VNAV NA below -10°C or above 54°C. #RVR 1800 authorized with use of FD or AP or HUD to DA.		

ATIS <b>134.45</b>	VICTORIA TERMINAL APP CON <b>132.7 290.8</b>	BELLINGHAM TOWER * <b>124.9 (CTAF) 0 379.3</b>	GND CON <b>127.4 379.3</b>	UNICOM <b>122.95</b>
-----------------------	---	---	-------------------------------	-------------------------



NW-1, 15 MAY 2025 to 12 JUN 2025

NW-1, 15 MAY 2025 to 12 JUN 2025



GP 3.00° TCH 51	6 NM	4.5 NM	1.1 NM	
CATEGORY	A	B	C	D
LPV DA #		363/24	200 (200-½)	
LNAV/VNAV DA		491/30	328 (400-¾)	
LNAV MDA	560/24	397 (400-½)	560/35	397 (400-¾)
<b>C</b> CIRCLING	640-1	469 (500-1)	900-2 729 (800-2)	1160-3 989 (1000-3)