

WAAS CH 90133 W13A	APP CRS 125°	Rwy Idg TDZE Apt Elev	5084 3370 3373
--	------------------------	-----------------------------	---

RNAV (GPS) RWY 13

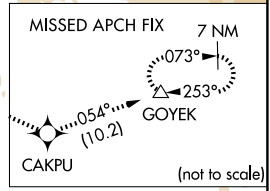
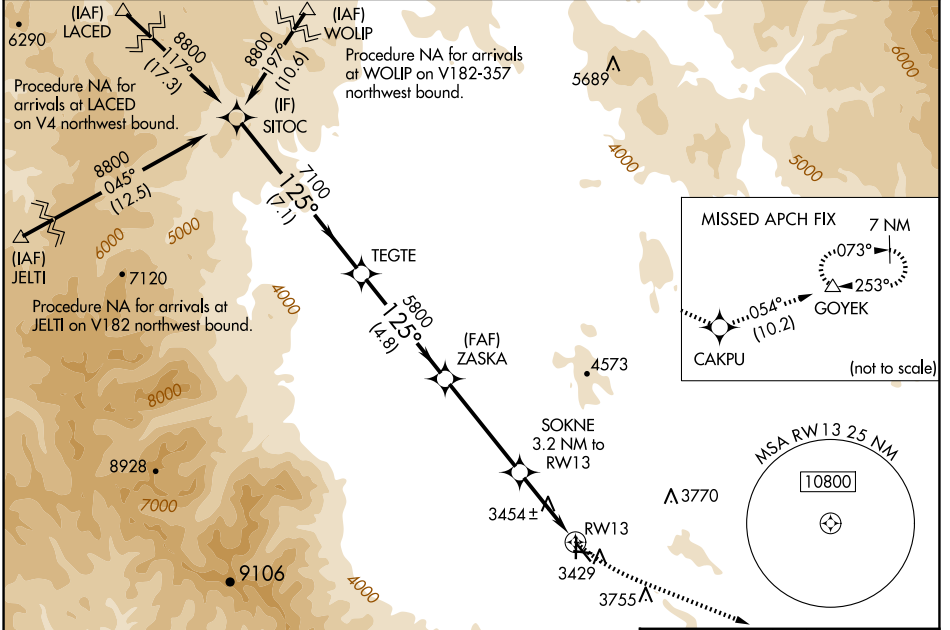
BAKER CITY MUNI (BKE)

RNP APCH - GPS.

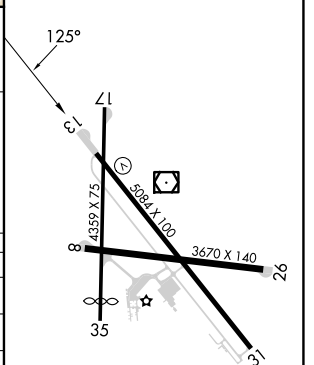
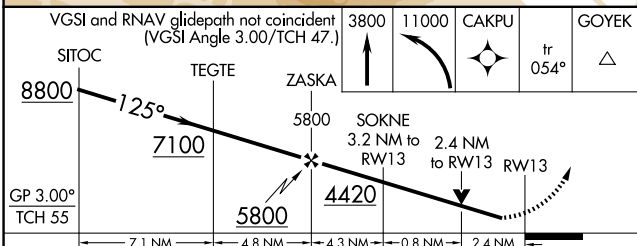
For uncompensated Baro-VNAV systems, LNAV/VNAV NA below -22°C or above 51°C. Rwy 13 helicopter visibility reduction below ¾ SM NA. Circling Rwy 8, 17, 26, and 35 NA at night.

MISSED APPROACH: Climb to 3800 then climbing left turn to 11000 direct CAKPU and on track 054° to GOYEK and hold, continue climb-in-hold to 11000. # Missed approach requires minimum climb of 266 feet per NM to 4580.

ASOS 134.275	SALT LAKE CENTER 128.05 306.95	UNICOM 123.0 (CTAF)
------------------------	--	-------------------------------



ELEV 3373	TDZE 3370
------------------	------------------



CATEGORY	A	B	C	D
LPV DA #		3621-¾	251 (300-¾)	
LPV DA		3833-1½	463 (500-1½)	
LNAV/VNAV DA		3916-1⅞	546 (600-1⅞)	
LNAV MDA	4200-1 830 (900-1)	4200-1¼ 830 (900-1¼)	4200-2½	830 (900-2½)
CIRCLING	4200-1¼	827 (900-1¼)	4560-3 1187 (1200-3)	4720-3 1347 (1400-3)

REIL Rwys 13 and 31 **1**

MIRL Rwy 13-31 **1**

NW-1, 15 MAY 2025 to 12 JUN 2025

NW-1, 15 MAY 2025 to 12 JUN 2025