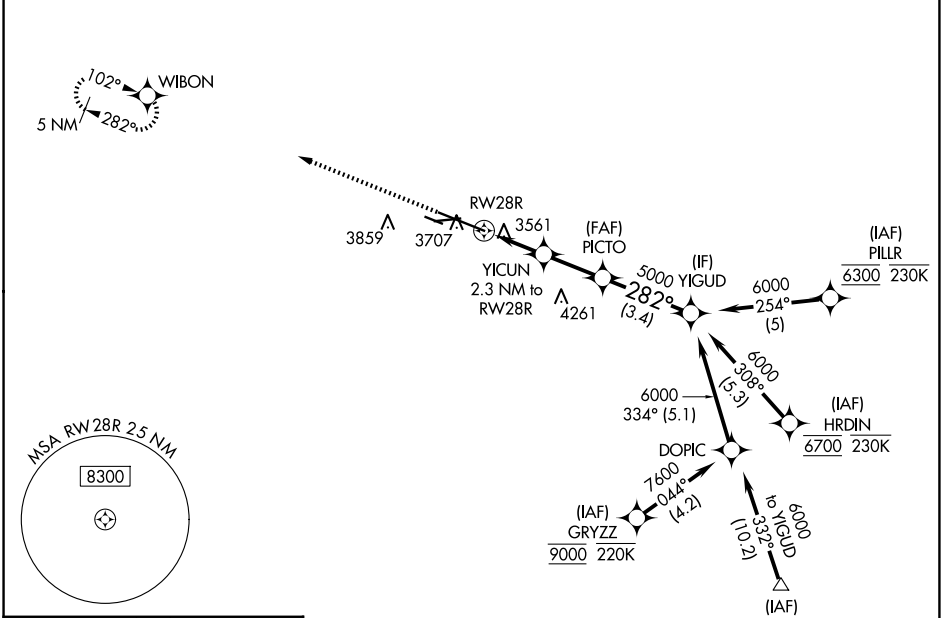


WAAS CH <b>56222</b> W28A	APP CRS <b>282°</b>	Rwy Idg <b>10518</b> TDZE <b>3517</b> Apt Elev <b>3662</b>
---------------------------------	------------------------	--

# RNAV (GPS) Y RWY 28R

BILLINGS LOGAN INTL (BIL)

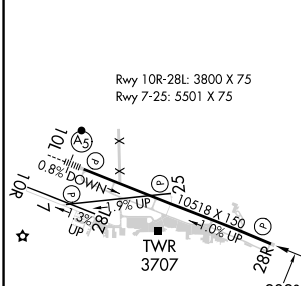
RNP APCH - GPS.		MISSED APPROACH: Climb to 5900 direct WIBON and hold.		
ATIS <b>126.3</b>	BILLINGS APP CON <b>120.5 284.6</b>	BILLINGS TOWER <b>127.2 257.8</b>	GND CON <b>121.9</b>	CLINC DEL <b>121.9</b>



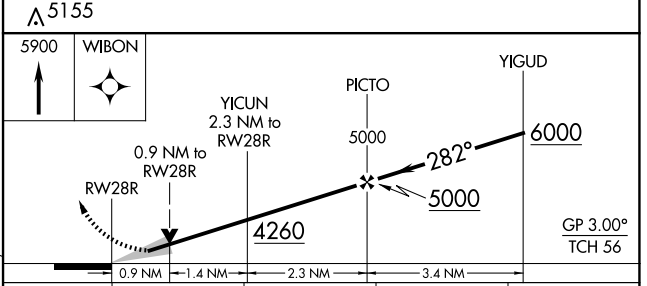
NW-1, 15 MAY 2025 to 12 JUN 2025

NW-1, 15 MAY 2025 to 12 JUN 2025

ELEV 3662	<b>D</b>	TDZE 3517
-----------	----------	-----------



HIRL Rwy 10L-28R REIL Rwy 25 and 28R MIRL Rwy 7-25 and 10R-28L
--



CATEGORY	A	B	C	D
LPV DA		3767- <sup>3</sup> / <sub>4</sub>	250 (200- <sup>3</sup> / <sub>4</sub> )	
LNAV/VNAV DA		3786- <sup>7</sup> / <sub>8</sub>	269 (200- <sup>7</sup> / <sub>8</sub> )	
LNAV MDA		3820-1	303 (200-1)	
<b>C</b> CIRCLING	4160-1	498 (500-1)	4180-1 <sup>1</sup> / <sub>2</sub> 518 (600-1 <sup>1</sup> / <sub>2</sub> )	4580-3 918 (1000-3)