

# RNAV (GPS) RWY 34

BEND MUNI (BDN)

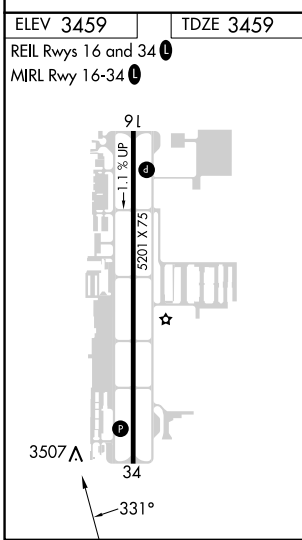
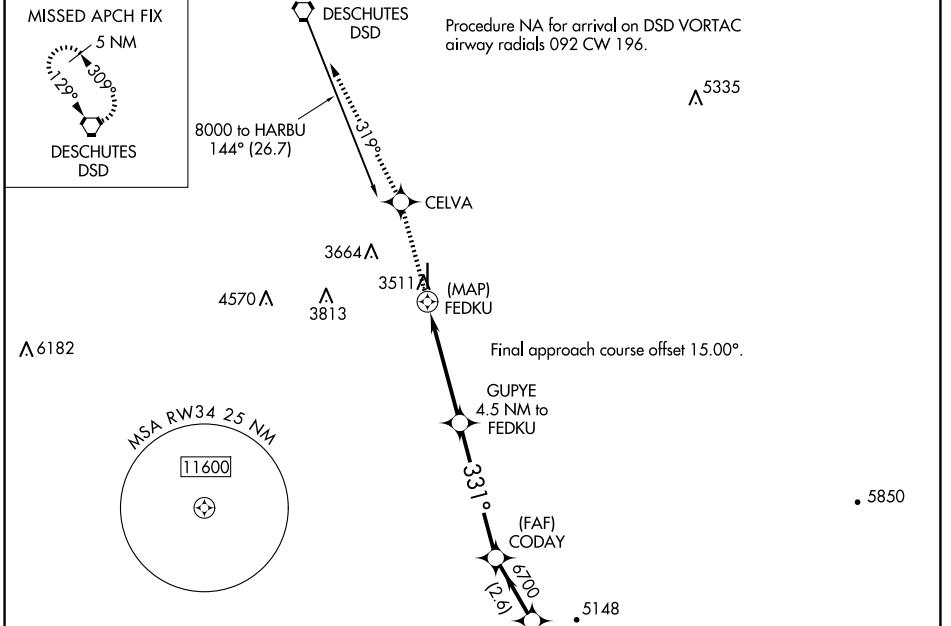
APP CRS <b>331°</b>	Rwy Idg TDZE Apt Elev	<b>5201</b> <b>3459</b> <b>3459</b>
------------------------	-----------------------------	---

RNP APCH - GPS.

▼ Rwy 34 helicopter visibility reduction below 3/4 SM NA. When local altimeter setting not received, use Redmond altimeter setting and increase all MDAs 100 feet and LNAV visibility Cats B, C, and D 1/2 SM and Circling visibility Cats A, B, and C 1/2 SM.

MISSED APPROACH: Climb to 6000 direct CELVA and on track 319° to DSD VORTAC and hold.

AWOS-3 <b>134.425</b>	SEATTLE CENTER <b>126.15 269.475</b>	UNICOM <b>123.0 (CTAF) 0</b>
--------------------------	---	---------------------------------



6000	CELVA	tr 319°	DSD	VGSi and descent angles not coincident (VGSi Angle 3.00/TCH 44).	
				NALOE	HARBU 7 NM Holding Pattern
			GUPYE	CODAY	
			1.6 NM to FEDKU	4.5 NM to FEDKU	136° 17500
			FEDKU	FEDKU	← 316° 8000
			5100	6700	7400
			0.5	1.6	2.9 NM
				5 NM	2.6 NM
				3.4 NM	
CATEGORY	A	B	C	D	
LNAV MDA	4180-1	721 (800-1)	4180-2	721 (800-2)	
CIRCLING	4180-1	721 (800-1)	4180-2	4640-3	1181 (1200-3)

NW-1, 15 MAY 2025 to 12 JUN 2025

NW-1, 15 MAY 2025 to 12 JUN 2025