

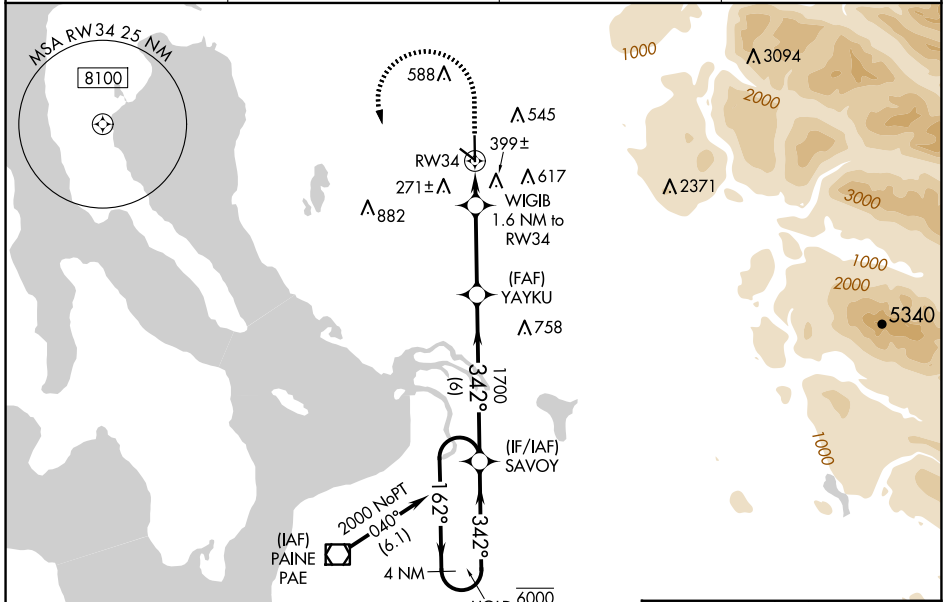
WAAS CH 90324 W34A	APP CRS 342°	Rwy Idg 5332 TDZE 135 Apt Elev 142
--	------------------------	---

RNAV (GPS) RWY 34

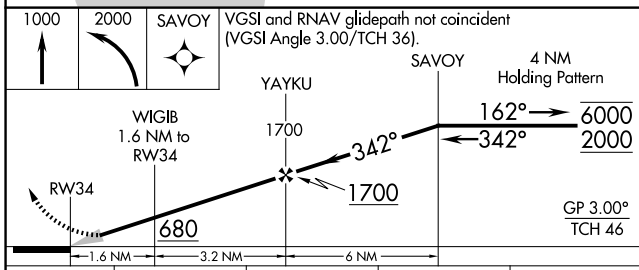
ARLINGTON MUNI (A WO)

RNP APCH-GPS.	MALS 	MISSED APPROACH: Climb to 1000 then climbing left turn to 2000 direct SAVOY and hold.
Inop table does not apply to LPV. For uncompensated Baro-VNAV systems, LNAV/VNAV NA below -15°C or above 54°C. For inop ALS, increase LNAV/VNAV all Cats visibility to 1 3/4 SM and LNAV Cat C and D visibility to 1 1/2 SM.		

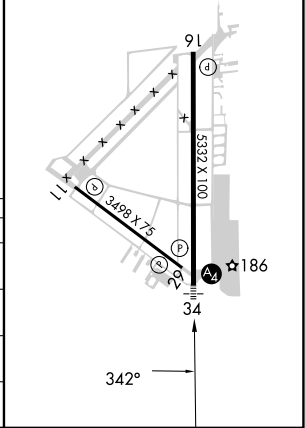
AWOS-3PT 135.625	SEATTLE APP CON 128.5 306.9	CLNC DEL 121.725	CTAF 122.725
----------------------------	---------------------------------------	----------------------------	------------------------



Procedure NA for arrival on PAE VOR/DME airway radials 298 CW 329, and on T268 westbound.



ELEV 142	TDZE 135
MIRL Rwy 16-34	
REIL Rwy 16	
REIL Rws 11 and 29	



CATEGORY	A	B	C	D
LPV DA		335-3/4	200 (200-3/4)	
LNAV/VNAV DA		510-3/4	375 (400-3/4)	
LNAV MDA	540-3/4	405 (400-3/4)	540-1	405 (400-1)
CIRCLING	840-1	900-1	1000-2 1/2	1040-3
	698 (700-1)	758 (800-1)	858 (900-2 1/2)	898 (900-3)

NW-1, 15 MAY 2025 to 12 JUN 2025

NW-1, 15 MAY 2025 to 12 JUN 2025