

WAAS CH 69643 W16A	APP CRS 166°	Rwy Idg TDZE Apt Elev	7025 6188 6221
--	------------------------	-----------------------------	---

RNAV (GPS) RWY 16

AFTON LINCOLN COUNTY/GENERAL BOYD L EDDINS FLD (AFO)

RNP APCH - GPS.

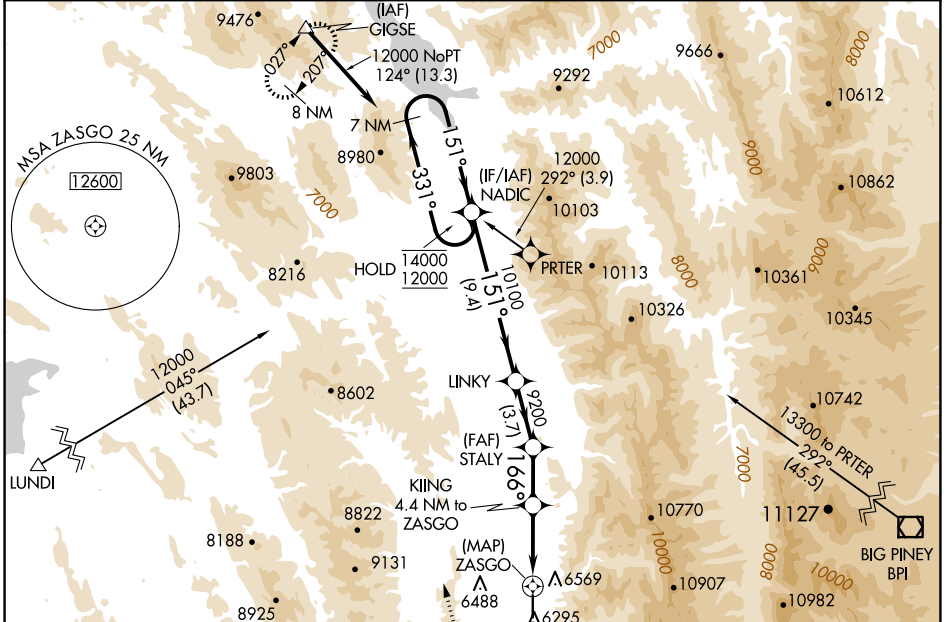
⚠ Rwy 16 helicopter visibility reduction below ¾ SM NA. When Afton altimeter setting not received, procedure NA.

⚠ MISSED APPROACH: (Do not exceed 210K until GIGSE) Climb to 7400 then climbing right turn to 13300 direct GIGSE and hold.

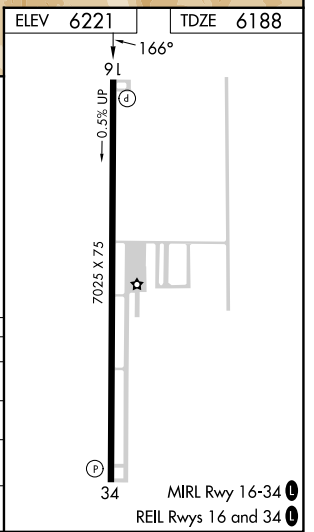
Missed approach requires minimum climb of 420 feet per NM to 9000.

***** Missed approach requires minimum climb of 400 feet per NM to 9000.

AWOS-3P 119.025	SALT LAKE CENTER 128.35 239.25	UNICOM 122.8 (CTAF)
---------------------------	--	-------------------------------



7400	13300	GIGSE	VGSI and RNAV glidepath not coincident (VGSI Angle 3.50/TCH 52).			
KIING 4.4 NM to ZASGO	STALY 9200	LINKY	NADIC 7 NM Holding Pattern			
3.1 NM to ZASGO	166°	10100	331°	14000	GP 3.50° TCH 45	
8040	9200			151°	12000	
0.5	3.1 NM	1.2	3.1 NM	3.7 NM	9.4 NM	
CATEGORY	A	B	C	D		
LPV DA*	6485-1 297 (300-1)			NA		
LPV DA	7110-2½ 922 (900-2½)			NA		
LNAV MDA#	7600-1¼ 1412 (1400-1¼)	7600-1½ 1412 (1400-1½)	7600-3 1412 (1400-3)	NA		
LNAV MDA	7800-1¼ 1612 (1600-1¼)	7800-1½ 1612 (1600-1½)	7800-3 1612 (1600-3)	NA		



NW-1, 15 MAY 2025 to 12 JUN 2025

NW-1, 15 MAY 2025 to 12 JUN 2025