

APP CRS	Rwy Idg	<b>4156</b>
<b>082°</b>	TDZE	<b>1618</b>
	Apt Elev	<b>1635</b>

# RNAV (GPS) RWY 8

LEXINGTON (9S9)

RNP APCH - GPS.

**NA** Circling Cat D NA when using HRI altimeter setting. When local altimeter not received, use HRI altimeter setting and increase all MDAs 220 feet and LNAV visibility Cat C ½ SM, and Circling visibility Cats A and B ¼ SM. Procedure NA at night. Rwy 8 helicopter visibility reduction below 1 SM NA.

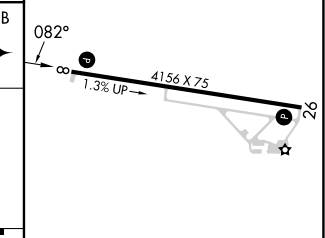
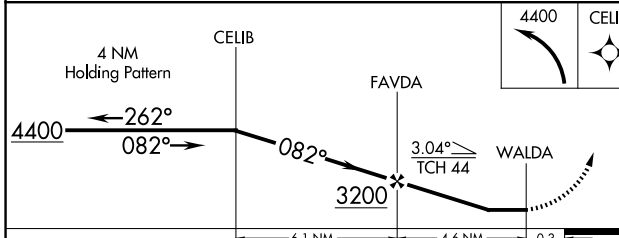
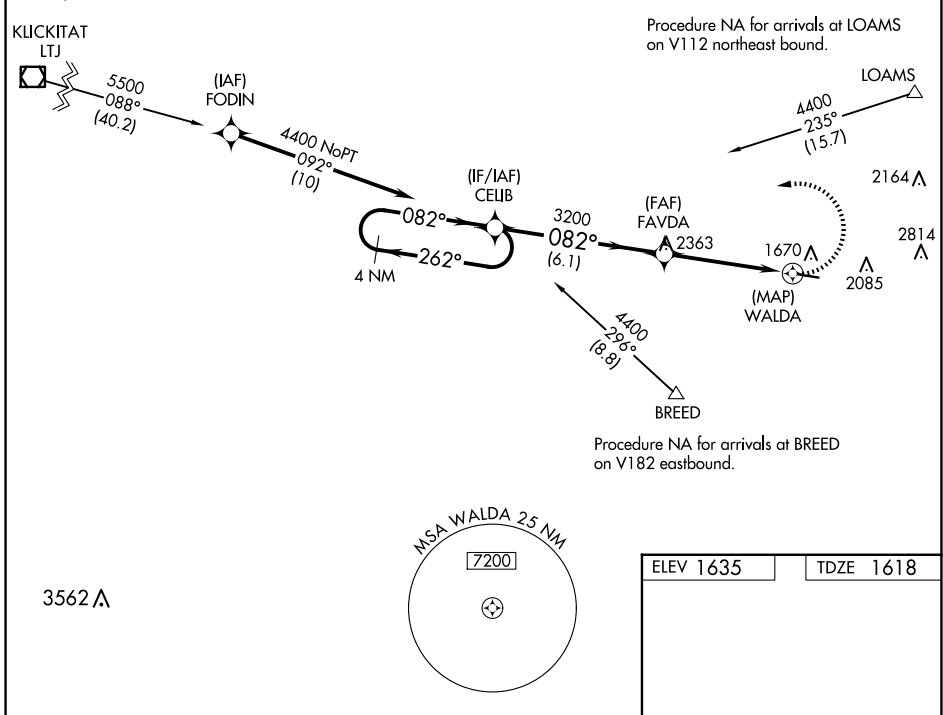
MISSED APPROACH: Climbing left turn to 4400 direct CELIB and hold.

AWOS-3  
**134.475**

SEATTLE CENTER  
**132.6 269.35**

CTAF  
**122.9**

Procedure NA for arrival on LTJ VOR/DME airway radials 032 CW 116.



	6.1 NM		4.6 NM		0.3
CATEGORY	A	B	C	D	
LNAV MDA	2120-1	502 (500-1)	2120-1½	502 (500-1½)	
CIRCLING	2380-1 745 (800-1)	2460-1¼ 825 (900-1¼)	2700-3 1065 (1100-3)	3180-3 1545 (1600-3)	

ELEV 1635 TDZE 1618

MIRL Rwy 8-26  
REIL Rws 8 and 26

NW-1, 15 MAY 2025 to 12 JUN 2025

NW-1, 15 MAY 2025 to 12 JUN 2025