

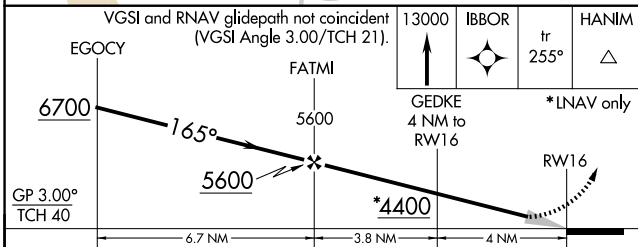
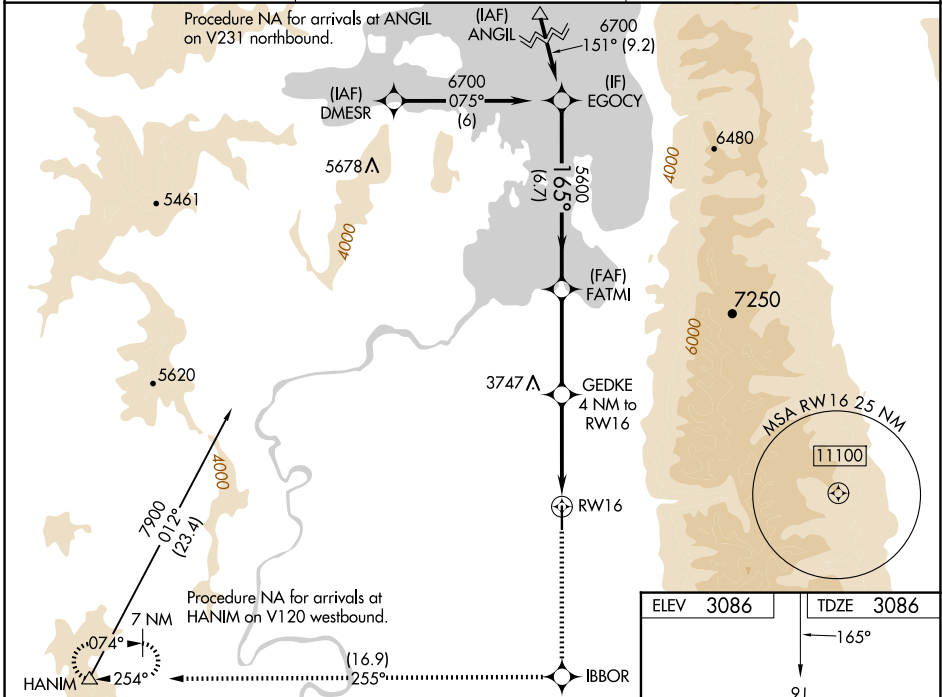
WAAS CH 45814 W16A	APP CRS 165°	Rwy Idg TDZE Apt Elev	4798 3086 3086
--	------------------------	-----------------------------	---

RNAV (GPS) RWY 16

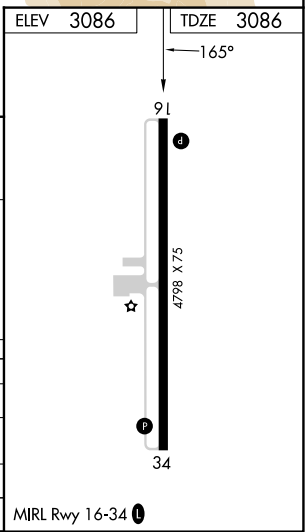
RONAN (7S)

RNP APCH.	<p>NA Baro-VNAV NA when using Missoula altimeter setting. For uncompensated Baro-VNAV systems, procedure NA below -21°C or above 54°C. Circling NA east of Rwy 16-34. When local altimeter setting not received, use Missoula altimeter setting: increase LPV DA to 3550 and LNAV/VNAV DA to 3639 and all visibilities 1/4 SM; increase all MDAs 120 feet and LNAV Cat B and Circling Cats A and B visibility 1/4 SM.</p>	<p>MISSED APPROACH: Climb to 13000 direct IBBOR and on track 255° to HANIM and hold, continue climb-in-hold to 13000.</p>
-----------	--	--

AWOS-3 119.925	SALT LAKE CITY CENTER 127.075 244.875	AUNICOM 122.8 (CTAF)
--------------------------	---	--------------------------------



CATEGORY	A	B	C	D
LPV DA	3443-1 1/4	357 (400-1 1/4)		NA
LNAV/VNAV DA	3532-1 3/8	446 (500-1 3/8)		NA
LNAV MDA	3800-1	714 (800-1)		NA
CIRCLING	3800-1	714 (800-1)		NA



NW-1, 15 MAY 2025 to 12 JUN 2025

NW-1, 15 MAY 2025 to 12 JUN 2025