

WAAS CH <b>63014</b> <b>W29A</b>	APP CRS <b>290°</b>	Rwy Idg TDZE Apt Elev	<b>5101</b> <b>1724</b> <b>1730</b>
--	------------------------	-----------------------------	---

# RNAV (GPS) RWY 29

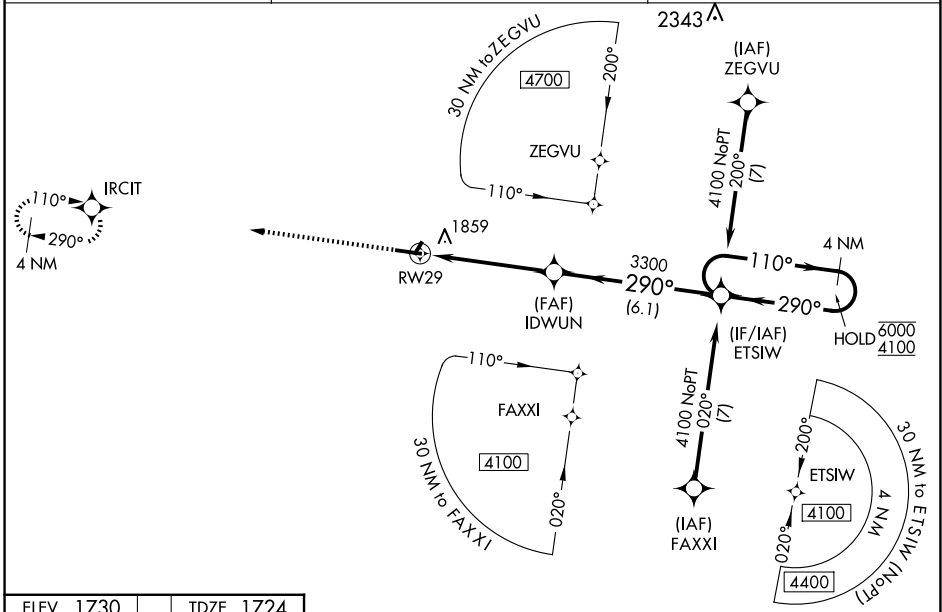
SCHUYLKILL COUNTY/JOE ZERBEY (Z.E.R.)

RNP APCH - GPS

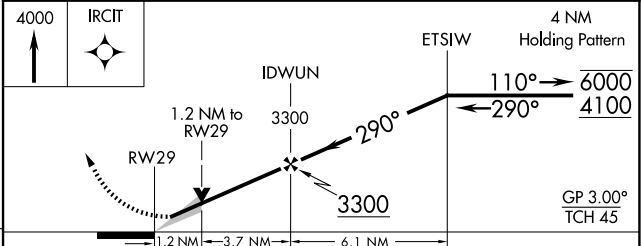
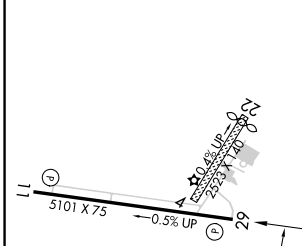
**NA** Circling NA to Rws 4 and 22. Baro-VNAV NA when using Selinsgrove altimeter setting. For uncompensated Baro-VNAV systems, LNAV/VNAV NA below -18°C or above 54°C. VDP NA when using Selinsgrove altimeter setting. When local altimeter setting not received, use Selinsgrove altimeter setting; increase LPV DA to 2156 feet and visibility 1/2 SM; LNAV/VNAV DA to 2376 feet and visibility 3/4 SM; increase all MDAs 240 feet and visibility LNAV Cats C/D 5/8 SM and Circling Cats C/D 1/2 SM.

**MISSED APPROACH:**  
Climb to 4000 direct IRCIT and hold.

AWOS-3 <b>127.575</b>	HARRISBURG APP CON <b>118.25 269.45</b>	UNICOM <b>123.075 (CTAF) 0</b>
--------------------------	--	-----------------------------------



ELEV 1730	TDZE 1724
-----------	-----------



CATEGORY	A	B	C	D
LPV DA		1924-3/4	200 (200-3/4)	
LNAV/VNAV DA		2144-1/8	420 (500-1/8)	
LNAV MDA	2120-1	396 (400-1)	2120-1/8	396 (400-1/8)
<b>C</b> CIRCLING	2160-1 430 (500-1)	2180-1 450 (500-1)	2180-1/2 450 (500-1/2)	2280-2 550 (600-2)

REIL Rws 11 and 29 **0**  
MIRL Rwy 11-29 **0**

NE-4, 15 MAY 2025 to 12 JUN 2025

NE-4, 15 MAY 2025 to 12 JUN 2025