

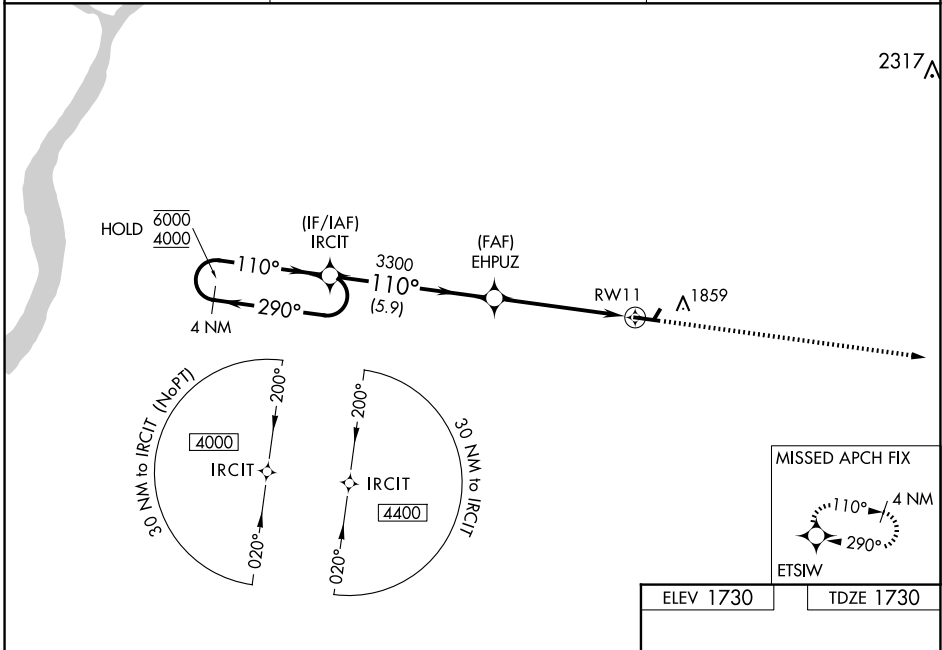
WAAS CH 61214 W11A	APP CRS 110°	Rwy Idg TDZE Apt Elev	5101 1730 1730
--	------------------------	-----------------------------	---

RNAV (GPS) RWY 11

SCHUYLKILL COUNTY/JOE ZERBEY (Z.ER)

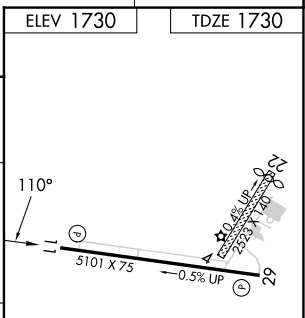
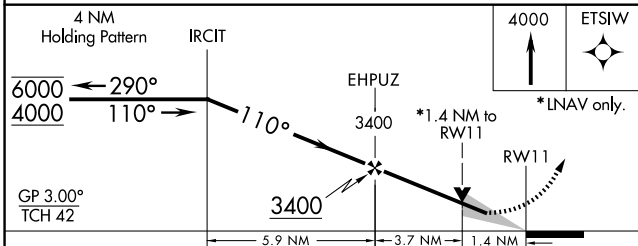
RNP APCH.	<p>⚠ NA</p> <p>Circling NA to Rws 4 and 22. Baro-VNAV NA when using Selinsgrove altimeter setting. For uncompensated Baro-VNAV Systems, LNAV/VNAV NA below -18°C or above 54°C. When local altimeter setting not received, use Selinsgrove altimeter setting and increase LPV DA to 2191 feet, LNAV/VNAV DA to 2281 feet and all MDAs 280 feet. Increase LPV all Cats visibility $\frac{5}{8}$ SM, LNAV/VNAV all Cats visibility $\frac{3}{4}$ SM, LNAV Cats C/D visibility $\frac{3}{8}$ SM and Circling Cats C/D visibility $\frac{3}{4}$ SM. VDP NA when using Selinsgrove altimeter setting.</p>	<p>MISSED APPROACH: Climb to 4000 direct ETSIW and hold.</p>

AWOS-3 127.575	HARRISBURG APP CON 118.25 269.45	UNICOM 123.075 (CTAF) 0
--------------------------	--	-----------------------------------



NE-4, 15 MAY 2025 to 12 JUN 2025

NE-4, 15 MAY 2025 to 12 JUN 2025



CATEGORY	A	B	C	D
LPV DA		1930- $\frac{3}{4}$	200 (200- $\frac{3}{4}$)	
LNAV/DA VNAV		2020- $\frac{7}{8}$	290 (300- $\frac{7}{8}$)	
LNAV MDA	2200-1	470 (500-1)	2200-1 $\frac{3}{8}$	470 (500-1 $\frac{3}{8}$)
C CIRCLING	2200-1	470 (500-1)	2220-1 $\frac{1}{2}$	2280-2
			490 (500-1 $\frac{1}{2}$)	550 (600-2)

REIL Rws 11 and 29 **0**

MIRL Rwy 11-29 **0**