

WAAS CH 93632 W10A	APP CRS 100°	Rwy Idg TDZE 928 Apt Elev 928	4549
--	------------------------	---	-------------

RNAV (GPS) RWY 10

BOGGS FLD (USW)

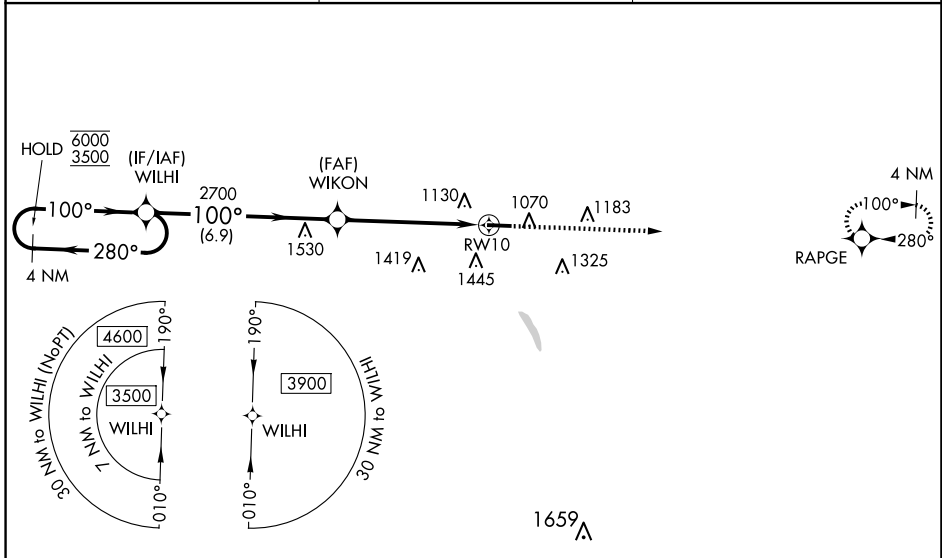
RNP APCH.

▼ Circling Rwy 28 NA at night. Baro-VNAV and VDP NA when using Charleston altimeter setting. Rwy 10 helicopter visibility reduction below 3/4 SM NA. For uncompensated Baro-VNAV systems, LNAV/VNAV NA below -16°C or above 54°C. When local altimeter setting not received, use Charleston altimeter setting, increase LPV DA to 1247 feet, LNAV/VNAV DA to 1730 feet, and LNAV/VNAV visibility all Cats by 1/2 SM; increase all MDAs 80 feet and LNAV visibility Cat B 1/4 SM and Cat C and D 1/2 SM, and Circling visibility Cats C and D by 1/4 SM.

▲ NA

MISSED APPROACH: Climb to 3200 direct RAPGE and hold.

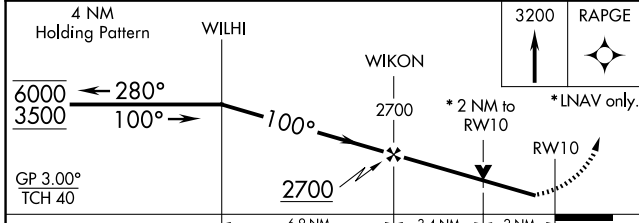
AWOS-3 118.575	CHARLESTON APP CON 124.1 269.125	UNICOM 122.725 (CTAF) 0
--------------------------	--	-----------------------------------



NE-4, 15 MAY 2025 to 12 JUN 2025

NE-4, 15 MAY 2025 to 12 JUN 2025

ELEV 928	TDZE 928
----------	----------



3200	RAPGE			
100°	4549 X 75			
6.9 NM	3.4 NM	2 NM		
CATEGORY	A	B	C	D
LPV DA	1178-1 250 (300-1)			
LNAV/VNAV DA	1661-2 733 (800-2)			
LNAV MDA	1620-1	692 (700-1)	1620-2	692 (700-2)
C CIRCLING	1620-1 692 (700-1)	1760-1 1/4 832 (900-1 1/4)	1760-2 1/2 832 (900-2 1/2)	1760-2 3/4 832 (900-2 3/4)
MIRL Rwy 10-28 0				