

RNAV (GPS) RWY 21

MID-OHIO VALLEY RGNL (PKB)

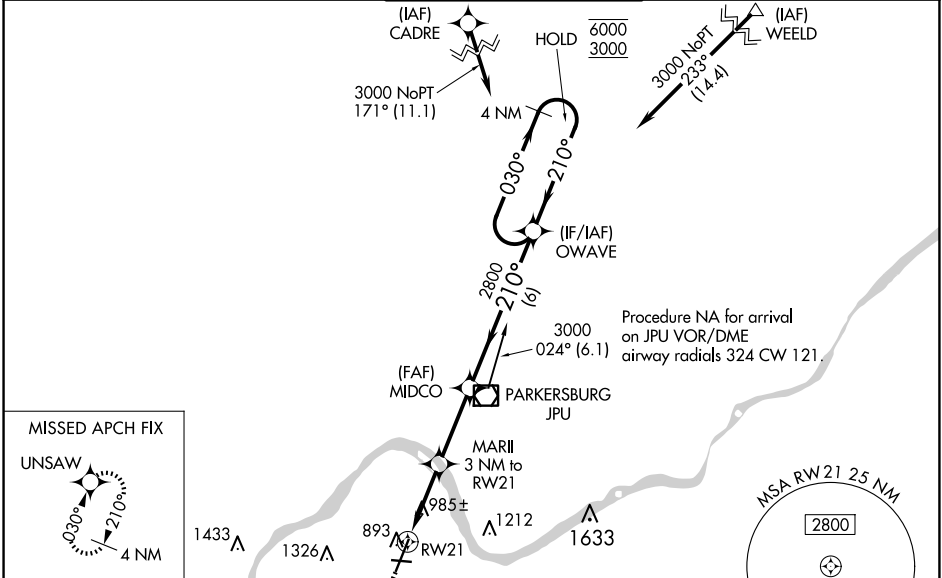
| | | | |
|--|------------------------|-----------------------------|---|
| WAAS CH 86727 W21A | APP CRS 210° | Rwy Idg TDZE Apt Elev | 6780 857 859 |
|--|------------------------|-----------------------------|---|

RNP APCH.

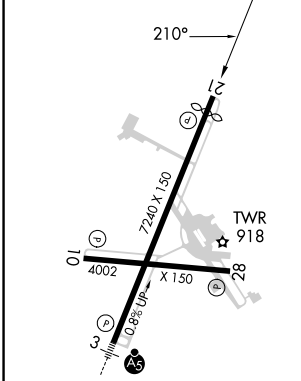
⚠ Baro-VNAV and VDP NA when using Athens/Albany altimeter setting. Rwy 21 helicopter visibility reduction below 3/4 SM NA. For uncompensated Baro-VNAV systems, procedure NA below -17°C or above 38°C. When local altimeter setting not received, use Athens/Albany altimeter setting: increase LPV DA to 1249 feet and visibility all Cats 1/4 SM; increase LNAV/VNAV DA to 1237 feet and visibility all Cats 1/2 SM; increase all MDAs 100 feet and visibility Cat C/D 1/2 SM. Circling Rwy 10, 28 NA at night.

MISSED APPROACH:
Climb to 3000 direct UNSAW and hold.

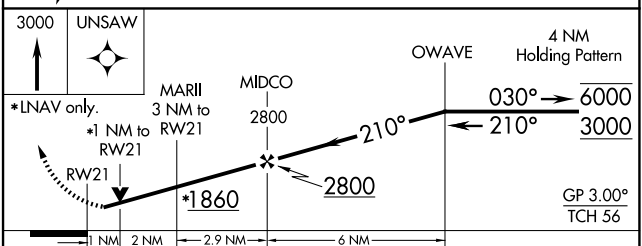
| | | | | |
|-----------------------|--|---|--------------------------|-------------------------|
| ATIS 124.35 | INDIANAPOLIS CENTER 125.55 317.475 | PARKERSBURG TOWER * 123.7 (CTAF) 0 257.8 | GND CON 126.45 | UNICOM 122.95 |
|-----------------------|--|---|--------------------------|-------------------------|



| | | |
|----------|----------|----------|
| ELEV 859 | D | TDZE 857 |
|----------|----------|----------|



REIL Rwy 28
REIL Rwy 10, 21
HIRL Rwy 3-21 and 10-28



| CATEGORY | A | B | C | D |
|--------------|-----------------------|-----------------------|-------------------------------|-------------------------------|
| LPV DA | | 1149-7/8 | 292 (300-7/8) | |
| LNAV/VNAV DA | | 1137-7/8 | 280 (300-7/8) | |
| LNAV MDA | 1240-1 | 383 (400-1) | 1240-1 1/2 | 383 (400-1 1/2) |
| CIRCLING | 1320-1 461 (500-1) | 1380-1 521 (600-1) | 1640-2 1/4 781 (800-2 1/4) | 1640-2 1/2 781 (800-2 1/2) |

NE-4, 15 MAY 2025 to 12 JUN 2025

NE-4, 15 MAY 2025 to 12 JUN 2025