

WAAS CH 45523 W09B	APP CRS 087°	Rwy Idg TDZE 13 Apt Elev 36	9500
--	------------------------	---	-------------

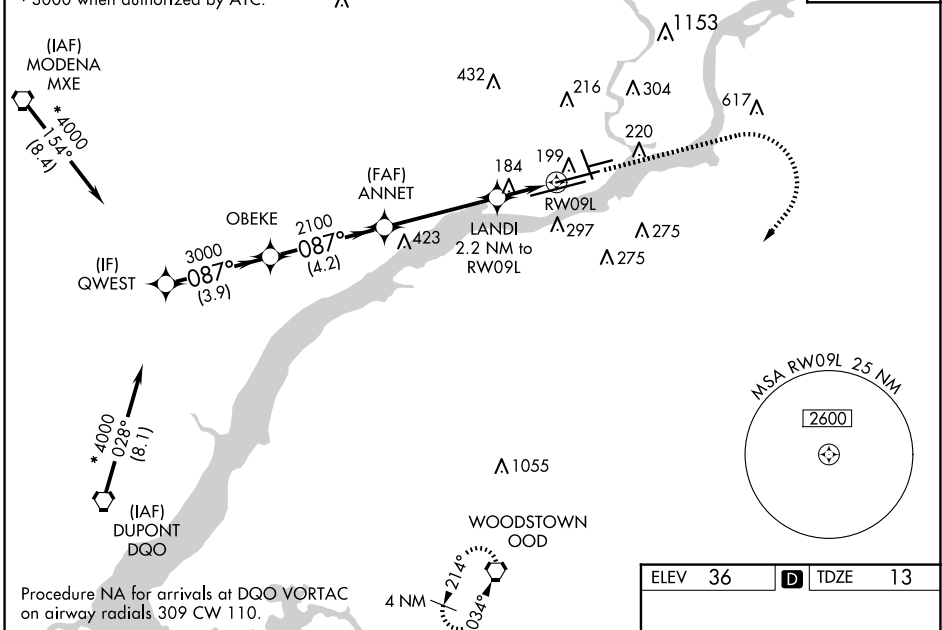
RNAV (GPS) Y RWY 9L

PHILADELPHIA INTL (PHL)

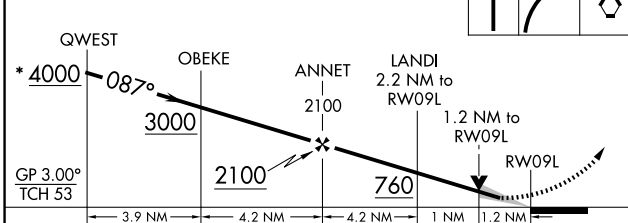
RNP APCH - GPS.	MALSR 	MISSED APPROACH: Climb to 1500, then climbing right turn to 3000 direct OOD VORTAC and hold.
<p>▼ For uncompensated Baro-VNAV systems, LNAV/VNAV NA below -12°C or above 54°C. For inop ALS, increase LNAV/VNAV visibility to RVR 4500, all Cats. # RVR 1800 authorized with use of FD or AP or HUD to DA.</p>		

D-ATIS ARR 133.4 DEP 135.925	PHILADELPHIA APP CON 124.35 319.15	PHILADELPHIA TOWER 118.5 327.05 (Rwys 9L/27R, 8/26 and 17/35) 135.1 327.05 (Rwy 9R/27L)	GND CON 121.9 348.6	CLNC DEL 118.85 348.6
--	--	---	-------------------------------	---------------------------------

Procedure NA for arrivals at MXE VORTAC on airway radials 129 CW 177.
* 3000 when authorized by ATC.



Procedure NA for arrivals at DQO VORTAC on airway radials 309 CW 110.
* 3000 when authorized by ATC.



ELEV 36	D TDZE 13
---------	------------------

TDZ/CL Rwy 9R
HIRL all Rwys
REIL Rwys 9L and 35

GP 3.00° TCH 53	3.9 NM	4.2 NM	4.2 NM	1 NM	1.2 NM
CATEGORY	A	B	C	D	
LPV DA #	213/24		200 (200-½)		
LNAV/VNAV DA	325/24		312 (300-½)		
LNAV MDA	440/24 427 (500-½)		440/40 427 (500-¾)		
C CIRCLING	540-1 504 (600-1)	600-1 564 (600-1)	620-1½ 584 (600-1½)	720-2¼ 684 (700-2¼)	

NE-4, 15 MAY 2025 to 12 JUN 2025

NE-4, 15 MAY 2025 to 12 JUN 2025