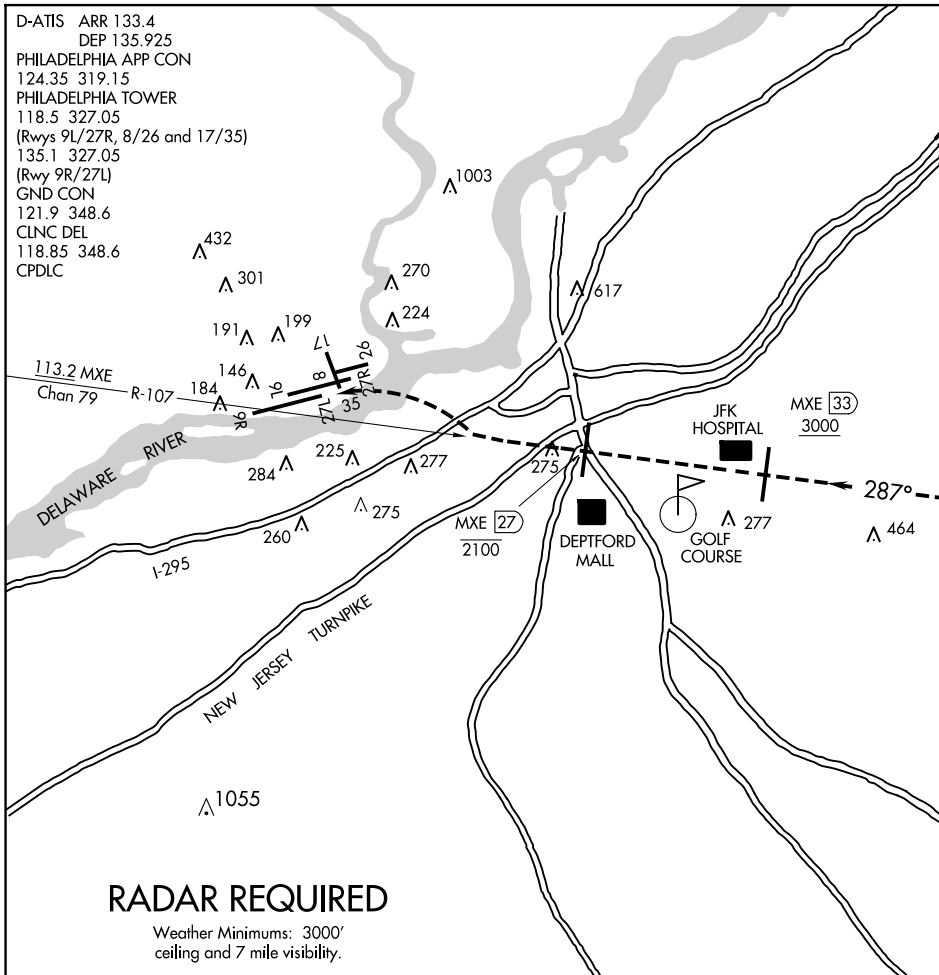


# LIBERTY VISUAL RWY 27L

AL-320 (FAA)

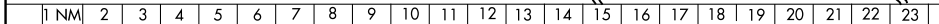
PHILADELPHIA INTL (PHL)  
PHILADELPHIA, PENNSYLVANIA

D-ATIS ARR 133.4  
 DEP 135.925  
 PHILADELPHIA APP CON  
 124.35 319.15  
 PHILADELPHIA TOWER  
 118.5 327.05  
 (Rwys 9L/27R, 8/26 and 17/35)  
 135.1 327.05  
 (Rwy 9R/27L)  
 GND CON  
 121.9 348.6  
 CLNC DEL  
 118.85 348.6  
 CPDLC



## RADAR REQUIRED

Weather Minimums: 3000'  
 ceiling and 7 mile visibility.



### LIBERTY VISUAL RWY 27L

- Expect RADAR vectors to the MXE R-107.
- Proceed Northwest on the MXE R-107 inbound for Rwy 27L.
- Report the airport in sight to final controller.
- Aircraft must remain on the MXE R-107 until the MXE R-107/27 DME; then proceed visually to Rwy 27L or as assigned by the tower.
- Expect aircraft to be utilizing a simultaneous visual or ILS approach to Rwy 27R during this operation.

# LIBERTY VISUAL RWY 27L

39°52'N-75°14'W

PHILADELPHIA, PENNSYLVANIA  
PHILADELPHIA INTL (PHL)

NE-4, 15 MAY 2025 to 12 JUN 2025

NE-4, 15 MAY 2025 to 12 JUN 2025