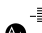
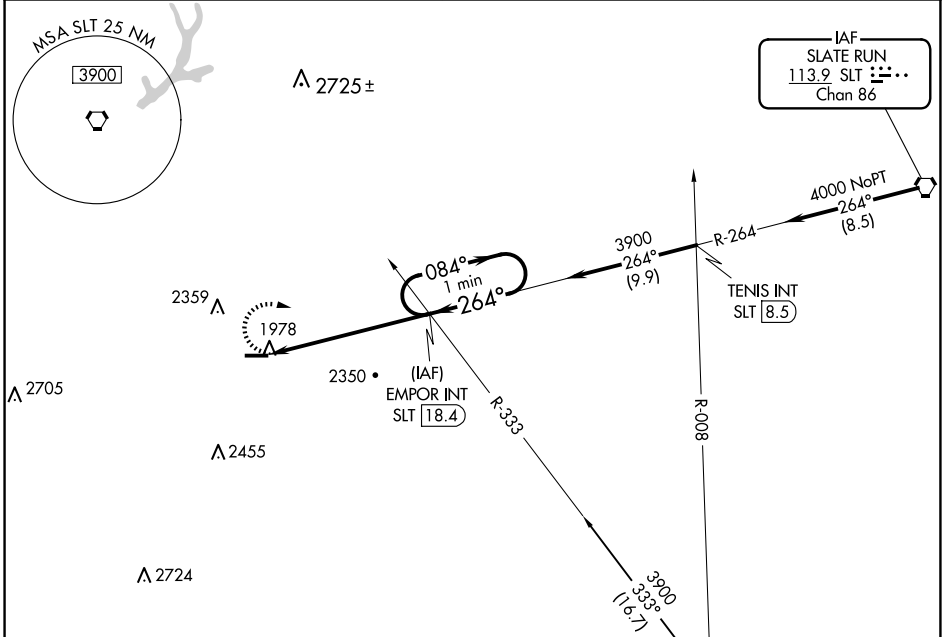


VORTAC SLT 113.9 Chan 86	APP CRS 264°	Rwy Idg 4300 TDZE 1934 Apt Elev 1934
--	------------------------	---

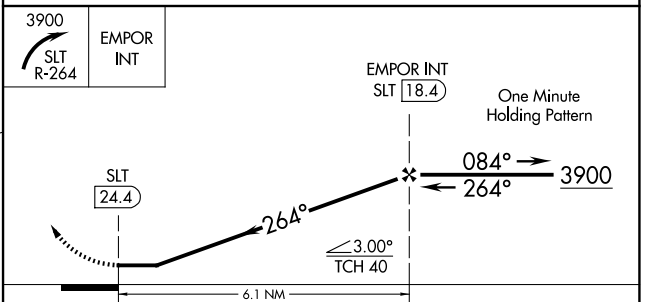
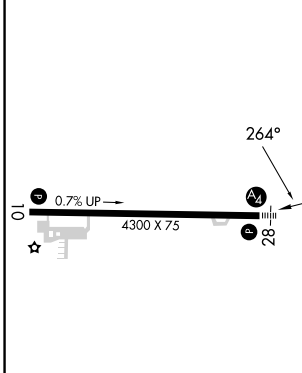
VOR RWY 28
ST MARYS MUNI (OYM)


<p>⚠ Night landing: Rwy 28 NA. Helicopter visibility reduction below 1 SM NA. When local altimeter setting not received, use Bradford altimeter setting and increase all MDA 240 feet, and S-28 Cat B and Circling Cat B/C visibility ¼ mile and S-28 Cat C/D ½ mile. Inoperative table does not apply to Cats C/D.</p>	<p>MALS </p>	<p>MISSED APPROACH: Climbing right turn to 3900 via SLT R-264 to EMPOR INT/18.4 DME and hold.</p>
--	---	--

AWOS-3P 118.05	CLEVELAND CENTER 126.725 291.65	ALTOONA CLNC DEL 122.4	UNICOM 122.7 (CTAF) 
--------------------------	---	----------------------------------	---



ELEV 1934	TDZE 1934
-----------	-----------



MIRL Rwy 10-28 					
FAF to MAP 6.1 NM					
Knots	60	90	120	150	180
Min:Sec	6:06	4:04	3:03	2:26	2:02
CATEGORY	A	B	C	D	
S-28	2820-1	886 (900-1)	2820-2½	886 (900-2½)	
CIRCLING	2820-1¼	886 (900-1¼)	2820-2¾	886 (900-2¾)	2820-3 886 (900-3)

NE-4, 15 MAY 2025 to 12 JUN 2025

NE-4, 15 MAY 2025 to 12 JUN 2025