

APP CRS	Rwy ldg	3300
239°	TDZE	688
	Apt Elev	688

RNAV (GPS) RWY 24

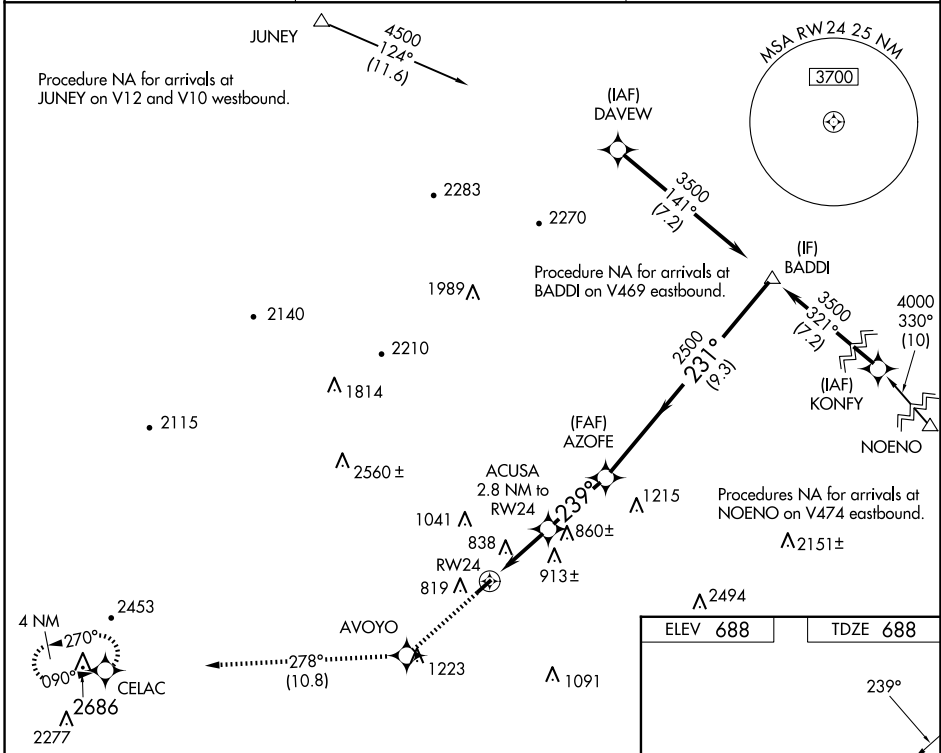
FRANKLIN COUNTY RGNL (N68)

RNP APCH - GPS.

▼ Rwy 24 helicopter visibility reduction below 1 SM NA. When local altimeter setting not received, use Hagerstown, MD altimeter setting and increase all MDAs 40 feet, increase LNAV Cat C visibility 1/4 SM. Straight-in and Circling Rwy 24 NA at night.
▲ NA

MISSED APPROACH: Climb to 4000 direct AVOYO and on track 278° to CELAC and hold, continue climb-in-hold to 4000.

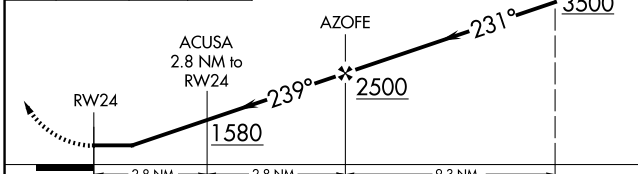
AWOS-3 120.725	HARRISBURG APP CON 124.1 273.525	CTAF 122.9
--------------------------	--	----------------------



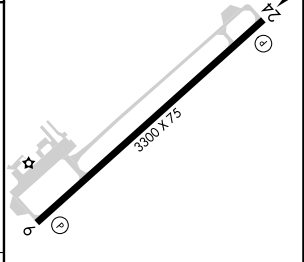
NE-4, 15 MAY 2025 to 12 JUN 2025

NE-4, 15 MAY 2025 to 12 JUN 2025

4000	AVOYO	tr	CELAC	Visual Segment - Obstacles.
↑	✧	278°	✧	



ELEV 688	TDZE 688
----------	----------



CATEGORY	A	B	C	D
LNAV MDA	1100-1	412 (500-1)	1100-1½ 412 (500-1½)	NA
CIRCLING	1220-1	532 (600-1)	1360-2 672 (700-2)	NA

MIRL Rwy 6-24