

VOR/DME LRP <b>117.3</b> Chan <b>120</b>	APP CRS <b>319°</b>	Rwy Ldg <b>4102</b> TDZE <b>403</b> Apt Elev <b>403</b>
--	------------------------	---

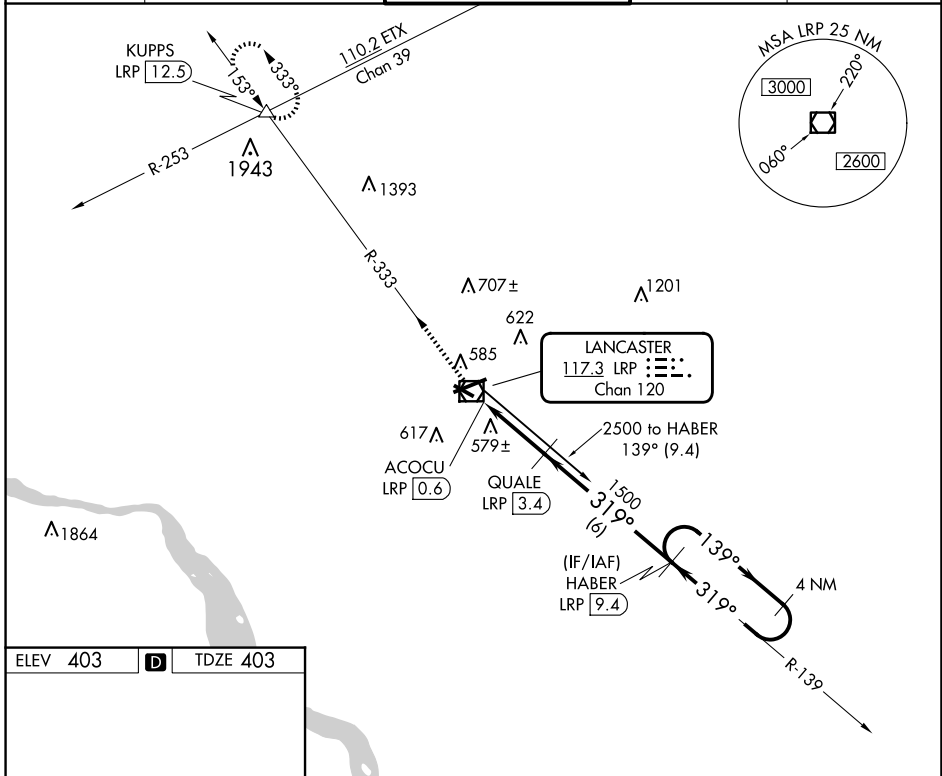
# VOR/DME RWY 31

LANCASTER (LNS)

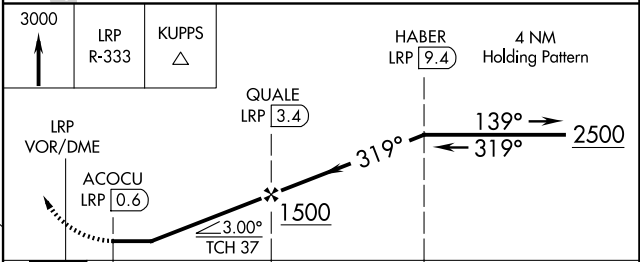
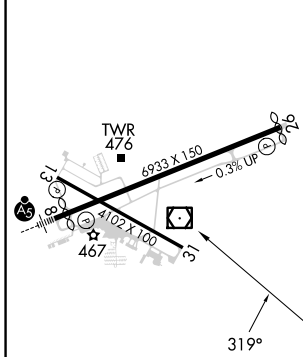
**⚠** Night landing: Rwy 13, 31 NA. Helicopter visibility reduction below 1 SM NA.  
**⚠** When local altimeter setting not received, use Harrisburg Intl altimeter setting and increase all MDA 80 feet, increase Cat C/D visibility ¼ mile.

MISSED APPROACH: Climb to 3000 via LRP VOR/DME R-333 to KUPPS INT/LRP 12.5 DME and hold.

ATIS <b>125.675</b>	HARRISBURG APP CON <b>126.45 281.525</b>	LANCASTER TOWER★ <b>120.9</b> (CTAF) <b>251.1</b>	GND CON <b>121.8</b>	UNICOM <b>122.95</b>
------------------------	---	--	-------------------------	-------------------------



ELEV <b>403</b>	<b>D</b>	TDZE <b>403</b>
-----------------	----------	-----------------



CATEGORY	A	B	C	D
S-31	840-1	437 (500-1)	840-1¼ 437 (500-1¼)	840-1½ 437 (500-1½)
CIRCLING	940-1	537 (600-1)	960-1½ 557 (600-1½)	1080-2¼ 677 (700-2¼)

NE-4, 15 MAY 2025 to 12 JUN 2025

NE-4, 15 MAY 2025 to 12 JUN 2025