

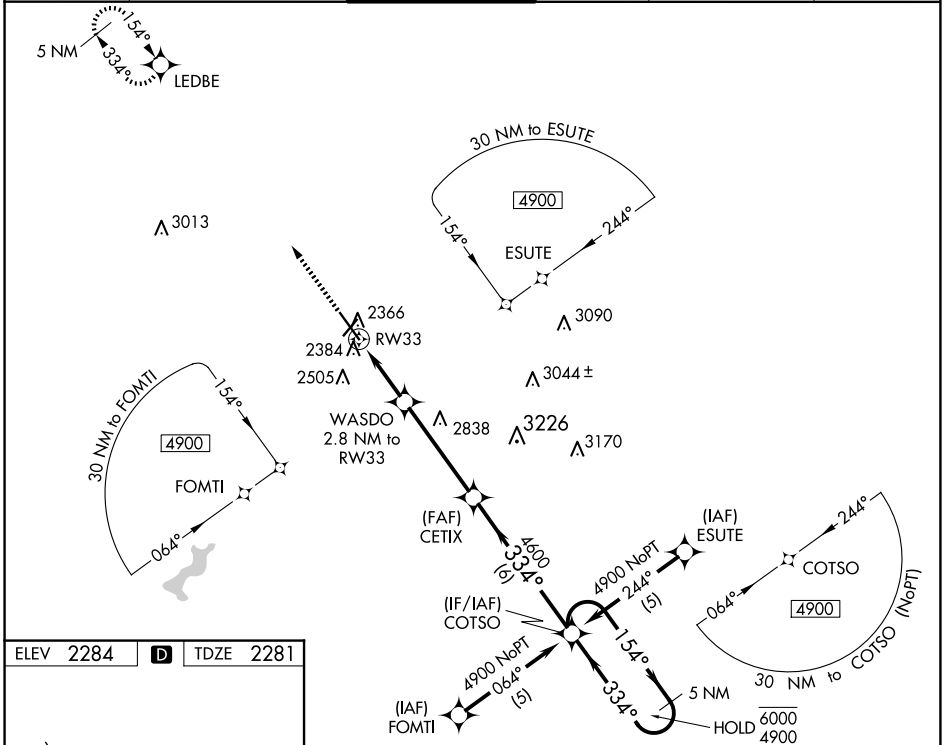
WAAS CH 61113 W33A	APP CRS 334°	Rwy Idg TDZE Apt Elev	6484 2281 2284
--	------------------------	-----------------------------	---

RNAV (GPS) RWY 33

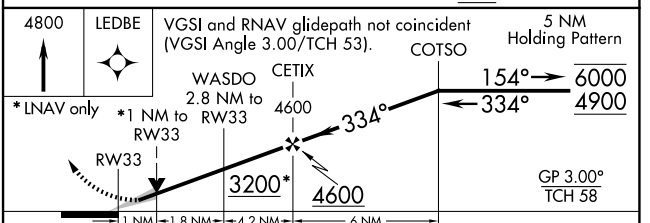
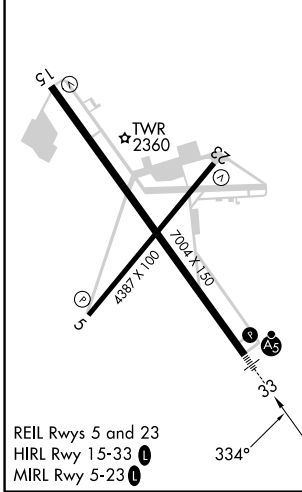
JOHN MURTHA JOHNSTOWN/CAMBRIA COUNTY (JST)

RNP APCH.	MALSR	MISSED APPROACH: Climb to 4800 direct LEDBE and hold.
<p>▼ Inop table does not apply to LNAV Cat D. For uncompensated Baro-VNAV systems, LNAV/VNAV NA below -19°C or above 54°C. For inop ALS increase LNAV/VNAV all Cats visibility to ½ SM and LNAV Cat C visibility to 1 SM.</p>		

ATIS 118.325	JOHNSTOWN APP CON ★ 121.2 299.2	JOHNSTOWN TOWER ★ 125.75 (CTAF) 0	GND CON 121.6	CLNC DEL 126.85 235.775	UNICOM 122.95
------------------------	---	---	-------------------------	-----------------------------------	-------------------------



ELEV 2284	D	TDZE 2281
-----------	----------	-----------



CATEGORY	A	B	C	D
LPV DA	2481-½		200 (200-½)	
LNAV/VNAV DA	2552-½		271 (300-½)	
LNAV MDA	2640-½	359 (400-½)	2640-⅝ 359 (400-⅝)	2640-1 359 (400-1)
C CIRCLING	2700-1 416 (500-1)	2880-1 596 (600-1)	2880-1½ 596 (600-½)	3000-2¼ 716 (800-2¼)

NE-4, 15 MAY 2025 to 12 JUN 2025

NE-4, 15 MAY 2025 to 12 JUN 2025