

WAAS CH 61029 W05A	APP CRS 049°	Rwy Idg TDZE Apt Elev	4387 2283 2284
--	------------------------	-----------------------------	---

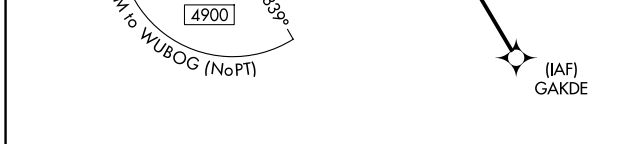
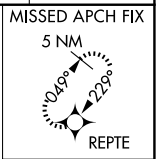
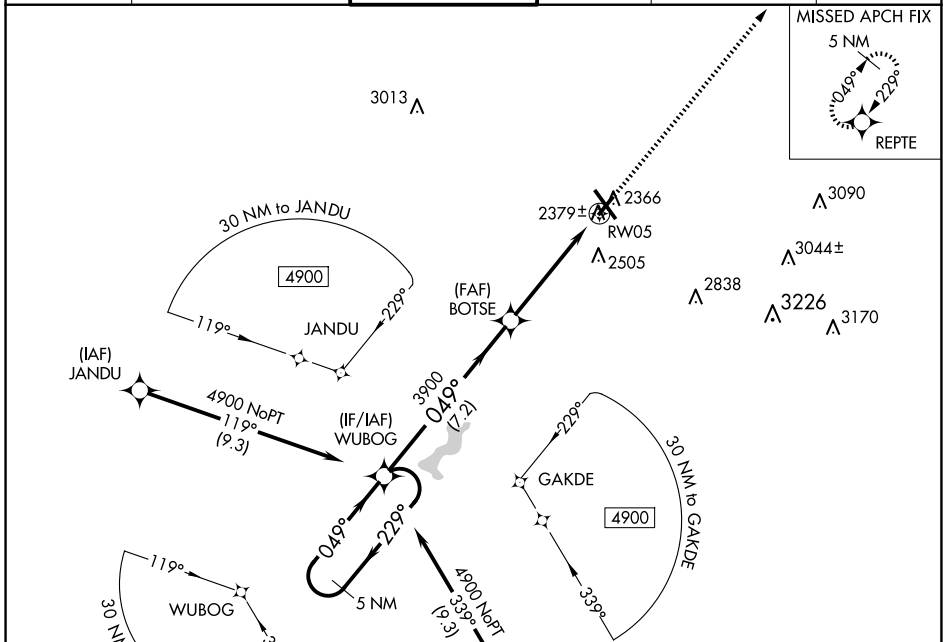
RNAV (GPS) RWY 5

JOHN MURTHA JOHNSTOWN/CAMBRIA COUNTY (JST)

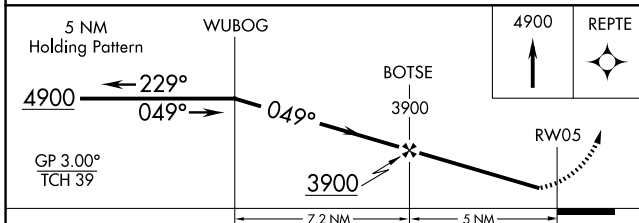
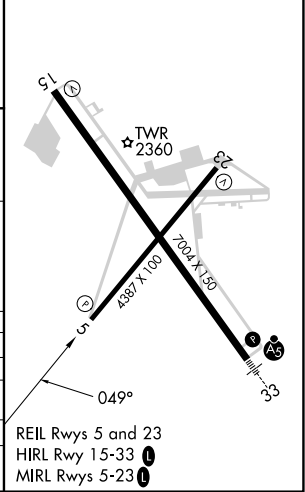
▼ When local altimeter setting not received, procedure NA. For uncompensated Baro-VNAV systems, LNAV/VNAV NA below -1.9°C (-2°F) or above 29°C (84°F). DME/DME RNP-0.3 NA. Rwy 5 helicopter visibility reduction below ¾ SM NA.

▲ MISSED APPROACH: Climb to 4900 direct REPTC and hold.

ATIS 118.325	JOHNSTOWN APP CON ★ 121.2 299.2	JOHNSTOWN TOWER ★ 125.75 (CTAF) 0	GND CON 121.6	CLNC DEL 126.85 235.775	UNICOM 122.95
------------------------	---	---	-------------------------	-----------------------------------	-------------------------



ELEV 2284	D	TDZE 2283
-----------	----------	-----------



CATEGORY	A	B	C	D
LPV DA		2533-1	250 (300-1)	
LNAV/VNAV DA		2573-1	290 (300-1)	
LNAV MDA		2640-1	357 (400-1)	
C CIRCLING	2700-1 416 (500-1)	2880-1 596 (600-1)	2880-1½ 596 (600-1½)	3000-2¼ 716 (800-2¼)

RNAV (GPS) RWY 5

NE-4, 15 MAY 2025 to 12 JUN 2025

NE-4, 15 MAY 2025 to 12 JUN 2025