

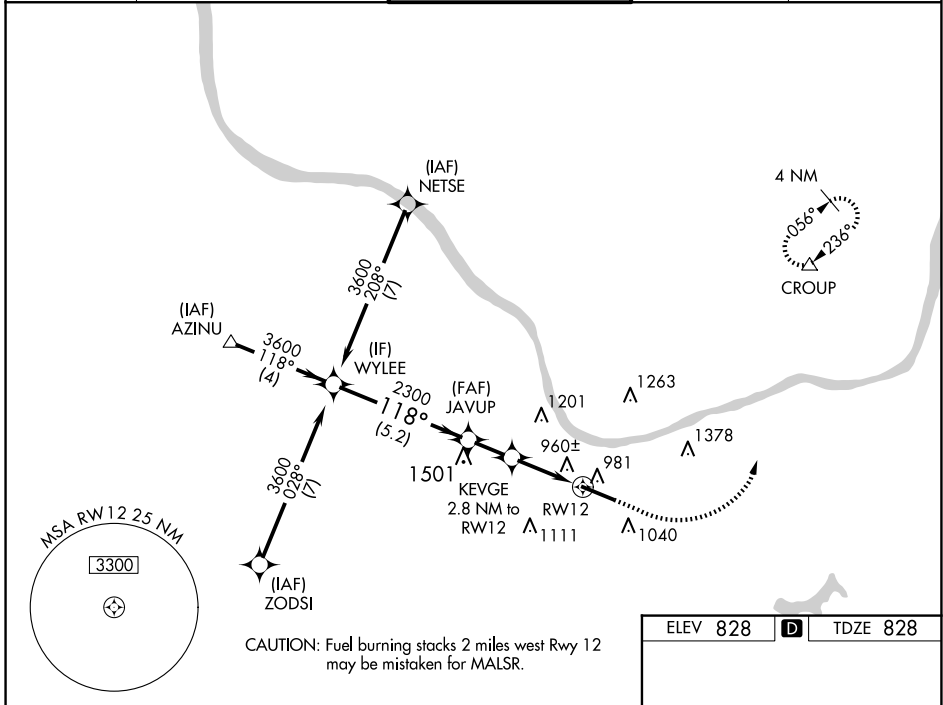
WAAS CH 45699 W12A	APP CRS 118°	Rwy Idg TDZE Apt Elev	6516 828 828
--	------------------------	-----------------------------	---

RNAV (GPS) RWY 12

TRI-STATE/MILTON J FERGUSON FLD (HTS)

RNP APCH - GPS.	MALSRL	MISSED APPROACH: Climb to 1700 then climbing left turn to 4000 direct CROUP and hold, continue to climb-in-hold to 4000.
<p>▼ For uncompensated Baro-VNAV systems, LNAV/VNAV NA below -14°C or above 54°C.</p> <p>▲ For inop ALS, increase LNAV/VNAV all Cats visibility to RVR 4500.</p> <p>* RVR 1800 authorized with use of FD or AP or HUD to DA.</p>		

ATIS 125.2	HUNTINGTON APP CON 119.75 270.1	HUNTINGTON TOWER 118.5 270.1	GND CON 121.9	CLNC DEL 118.05
----------------------	---	--	-------------------------	---------------------------

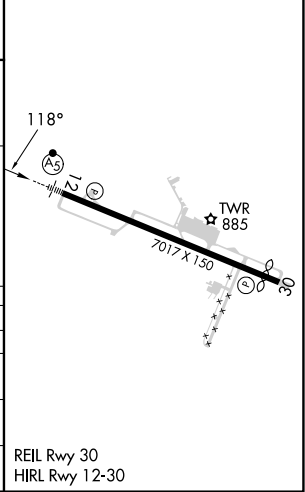


NE-4, 15 MAY 2025 to 12 JUN 2025

NE-4, 15 MAY 2025 to 12 JUN 2025

ELEV 828	D	TDZE 828
----------	----------	----------

	WYLEE	JAVUP	KEVGE 2.8 NM to RWY12	1700	4000	CROUP
	3600	2300	1760	↑	↻	△
	GP 3.00° TCH 56					
	5.2 NM		1.7 NM	1.7 NM	1.1 NM	
CATEGORY	A	B	C	D		
LPV DA*		1028/24	200 (200-½)			
LNAV/VNAV DA		1121/24	293 (300-½)			
LNAV MDA	1220/24	392 (400-½)	1220/35	392 (400-⅝)		
CIRCLING	1300-1 472 (500-1)	1380-1 552 (600-1)	1520-2 692 (700-2)	1740-3 912 (1000-3)		



REIL Rwy 30
HIRL Rwy 12-30