

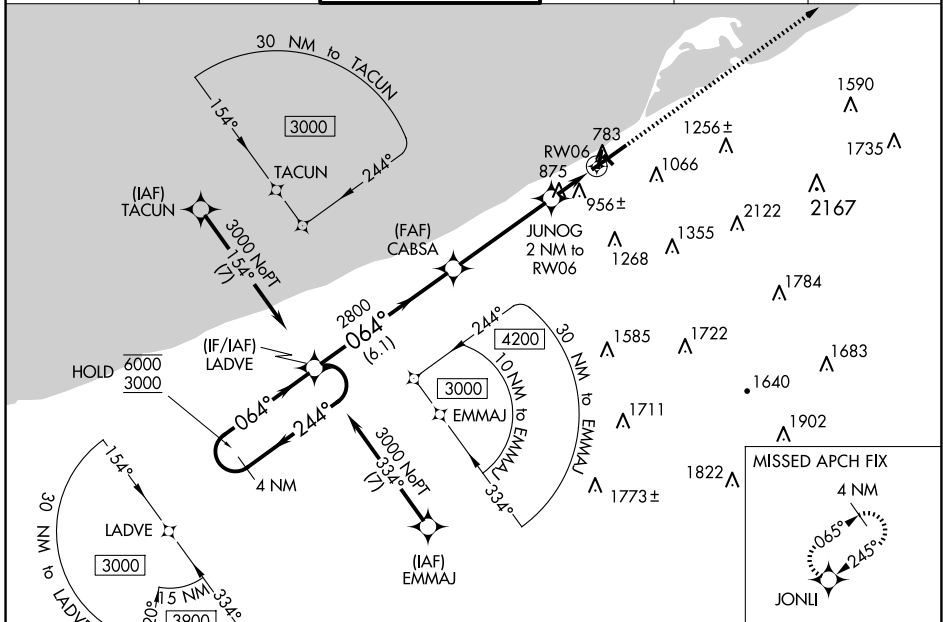
WAAS CH 77612 W06A	APP CRS 064°	Rwy Idg 7501 TDZE 732 Apt Elev 732
--	------------------------	---

RNAV (GPS) RWY 6

ERIE INTL/TOM RIDGE FLD (ERI)

RNP APCH - GPS.				MALSR	MISSED APPROACH: Climb to 3200 direct JONLI and hold.
<p>⚠ Circling NA southeast of Rwy 6-24. Circling Rwy 2, 20 NA at night. For uncompensated Baro-VNAV systems, LNAV/VNAV NA below -15°C or above 54°C. For inop ALS, increase LNAV Cots C and D visibility to 1% SM.</p>					

ATIS 120.35	BUFFALO APP CON * 121.0 257.8	ERIE TOWER * 118.1 (CTAF) 0 257.8	GND CON 121.9	CLNC DEL 126.8	UNICOM 122.95
-----------------------	---	---	-------------------------	--------------------------	-------------------------



NE-4, 15 MAY 2025 to 12 JUN 2025

NE-4, 15 MAY 2025 to 12 JUN 2025

4 NM Holding Pattern LADVE		3200	JONLI	
6000 ← 244°	3000 → 064°	2800	1420	
GP 3.00°	TCH 55	6.1 NM	4.3 NM	
CATEGORY	A	B	C	D
LPV DA	982/24		250 (300-½)	
LNAV/VNAV DA	1256/55		524 (600-1)	
LNAV MDA	1220/24	488 (500-½)	1220/50	488 (500-1)
C CIRCLING	1220-1	488 (500-1)	1220-1½ 488 (500-1½)	1340-2 608 (700-2)

4 NM Holding Pattern LADVE

3200

JONLI

TWR 797

ALS

HIRL Rwy 6-24 **1**

MIRL Rwy 2-20 **1**