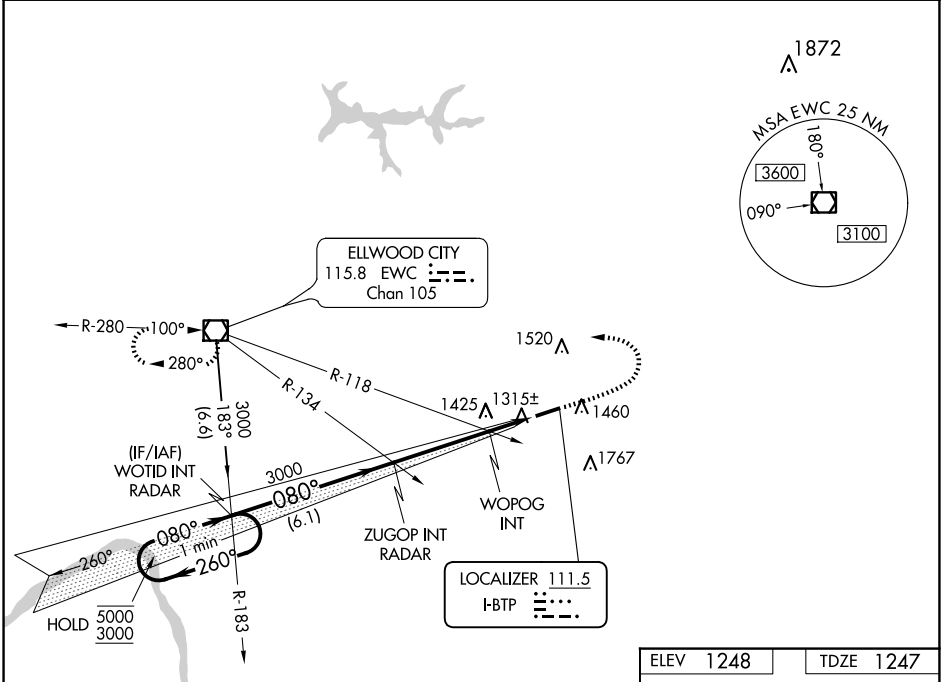


LOC I-BTP <b>111.5</b>	APP CRS <b>080°</b>	Rwy Idg <b>4801</b>
		TDZE <b>1247</b>
		Apt Elev <b>1248</b>

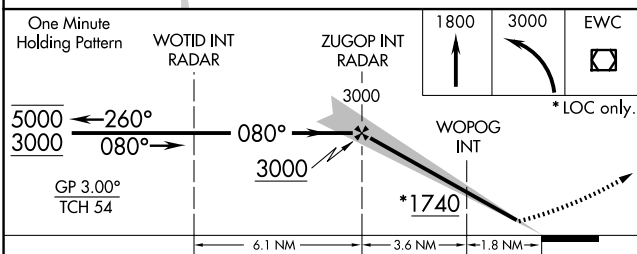
**ILS or LOC RWY 8**  
PITTSBURGH/BUTLER RGNL (BTP)

<p><b>▽</b> Rwy 8 helicopter visibility reduction below 3/4 SM NA. <b>▲</b> Circling Rwy 26 NA at night. S-ILS 8 inop table does not apply.</p>	<p>MALSF </p>	<p>MISSED APPROACH: Climb to 1800 then climbing left turn to 3000 direct EWC VOR/DME and hold.</p>	
AWOS-3PT <b>121.450</b>	PITTSBURGH APP CON <b>124.75 338.2</b>	CLNC DEL <b>119.4</b>	UNICOM <b>123.05 (CTAF) 0</b>



NE-4, 15 MAY 2025 to 12 JUN 2025

NE-4, 15 MAY 2025 to 12 JUN 2025



ELEV 1248	TDZE 1247
REIL Rwy 26 0	
HIRL Rwy 8-26 0	
FAF to MAP 5.4 NM	
Knots	60 90 120 150 180
Min:Sec	5:24 3:36 2:42 2:10 1:48

CATEGORY	A	B	C	D
S-ILS 8	1497-3/4 250 (300-3/4)			
S-LOC 8	1740-3/4	493 (500-3/4)	1740-1 1/8	493 (500-1 1/8)
<b>C</b> CIRCLING	1820-1	572 (600-1)	2080-2 1/2 832 (900-2 1/2)	2080-2 3/4 832 (900-2 3/4)
WOPOG FIX MINIMUMS (DUAL VOR RECEIVERS REQUIRED)				
S-LOC 8	1580-3/4 333 (400-3/4)			
<b>C</b> CIRCLING	1820-1	572 (600-1)	2080-2 1/2 832 (900-2 1/2)	2080-2 3/4 832 (900-2 3/4)