

VOR/DME BLF 115.05 Chan 97 (Y)	APP CRS 225°	Rwy Idg TDZE Apt Elev	4743 2857 2857
--	------------------------	-----------------------------	---

VOR RWY 23

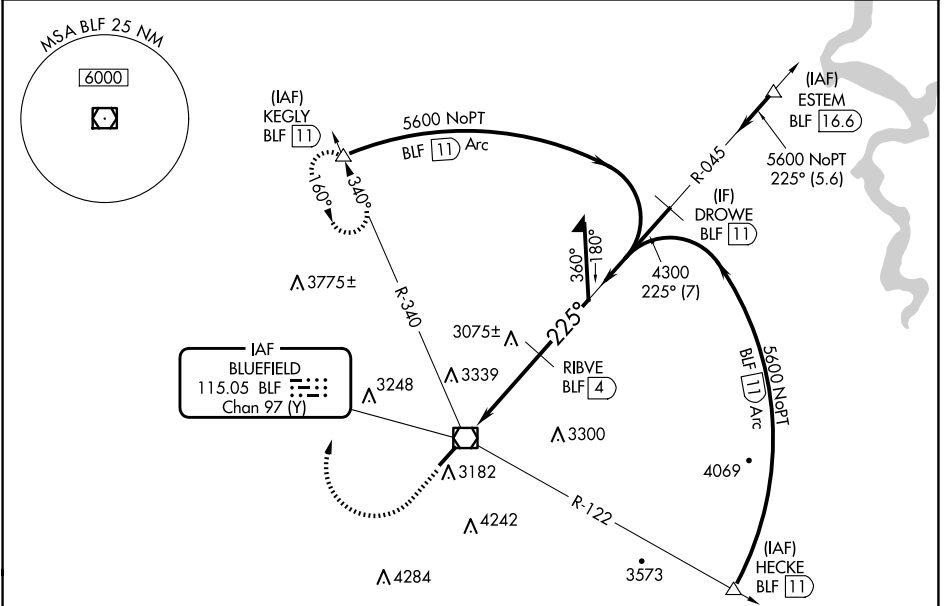
MERCER COUNTY (BLF)

DME required.

▼ When local altimeter setting not received, use BKW altimeter setting and increase all MDAs 460 feet; increase S-23 all visibilities 1 1/4 SM and Circling visibility Cat A/B/C 3/4 SM. VDP NA when using Beckley altimeter setting. Circling NA southeast of Rwy 5-23.

▲ MISSED APPROACH: Climb to 3800 then climbing right turn to 6000 on heading 020° and BLF R-340 to KEGLY/BLF 11 DME and hold.

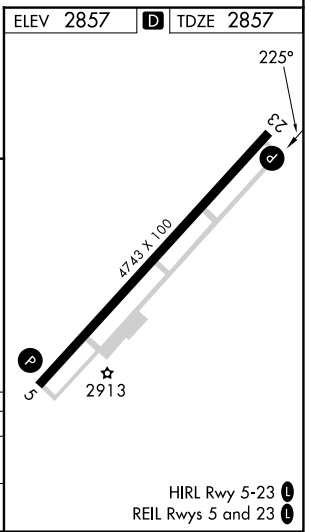
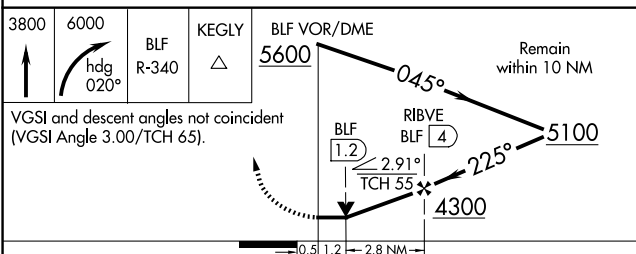
ASOS 132.725	INDIANAPOLIS CENTER 126.575 257.85	CTAF 122.9 0
------------------------	--	------------------------



NE-4, 15 MAY 2025 to 12 JUN 2025

NE-4, 15 MAY 2025 to 12 JUN 2025

ELEV 2857	D TDZE 2857
-----------	--------------------



CATEGORY	A	B	C	D
S-23	3440-1	583 (600-1)	3440-1 3/4	583 (600-1 3/4)
CIRCLING	3440-1 583 (600-1)	3460-1 603 (700-1)	3640-2 1/4 783 (800-2 1/4)	3780-3 923 (1000-3)

HIRL Rwy 5-23 **0**
REIL Rwys 5 and 23 **0**