


WAAS CH 87019 W32A	APP CRS 325°	Rwy Idg TDZE Apt Elev	6306 2120 2143
--	------------------------	-----------------------------	---

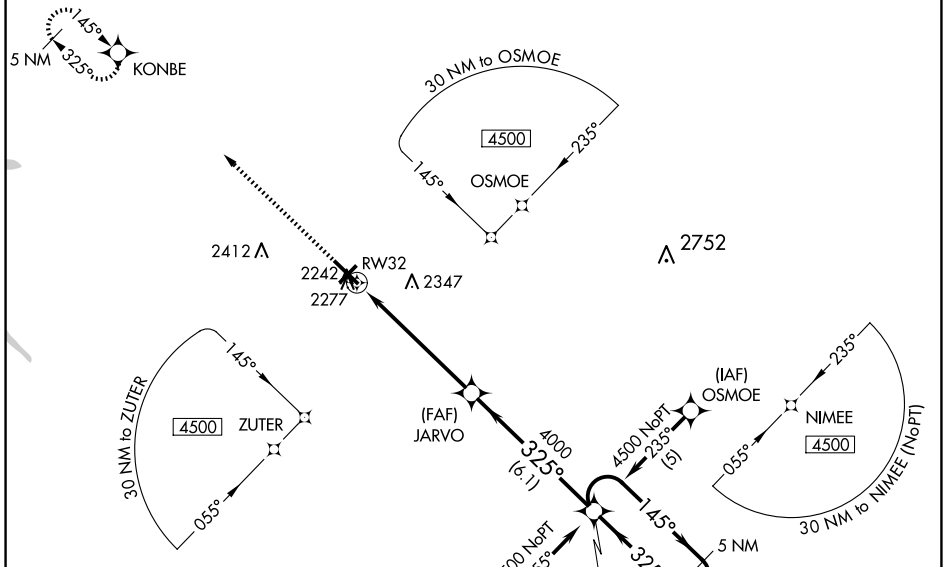
RNAV (GPS) RWY 32

BRADFORD RGNL (BFD)

⚠ For uncompensated Baro-VNAV systems, LNAV/VNAV NA below -19°C (-2°F) or above 54°C (130°F). Baro-VNAV and VDP NA when using St. Marys altimeter setting. DME/DME RNP-0.3 NA. Inop table does not apply to LPV and LNAV Cats A/B. For inop MALSR, increase LNAV/VNAV all Cats visibility to 1½ mile and LNAV Cats C/D visibility to 1¼ mile. When local altimeter setting not received, use St. Marys altimeter setting: increase LPV DA to 2455 feet; increase LNAV/VNAV DA to 2685 feet and all visibilities ½ SM; increase all MDAs 100 feet and Circling Cat C visibility ½ SM and Cat D ¼ SM. For inop MALSR, when using St. Marys altimeter setting, increase LPV all Cats visibility to 1½ mile.

MALSR

MISSED APPROACH:
 Climb to 4500 direct KONBE and hold.

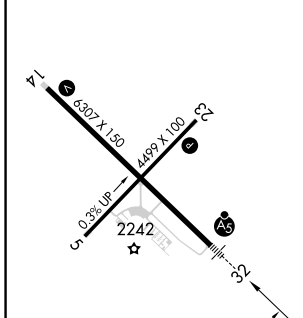
ASOS 133.825	CLEVELAND CENTER 124.325 353.85	UNICOM 123.075 (CTAF) 📻
------------------------	---	--



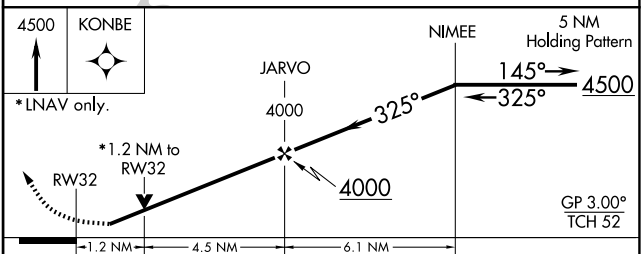
NE-4, 15 MAY 2025 to 12 JUN 2025

NE-4, 15 MAY 2025 to 12 JUN 2025

ELEV 2143	D	TDZE 2120
-----------	----------	-----------



MIRL Rwy 5-23 📻
HIRL Rwy 14-32 📻
REIL Rwy 5, 14 and 23 📻



CATEGORY	A	B	C	D
LPV DA		2370-1	250 (300-1)	
LNAV/VNAV DA		2600-1½	480 (500-1½)	
LNAV MDA		2540-1	420 (400-1)	
CIRCLING	2620-1	477 (500-1)	2720-1½ 577 (600-1½)	2760-2 617 (700-2)