

WAAS CH <b>70606</b> <b>W06A</b>	APP CRS <b>055°</b>	Rwy Idg TDZE Apt Elev	<b>5003</b> <b>1451</b> <b>1458</b>
--	------------------------	-----------------------------	---

# RNAV (GPS) RWY 6

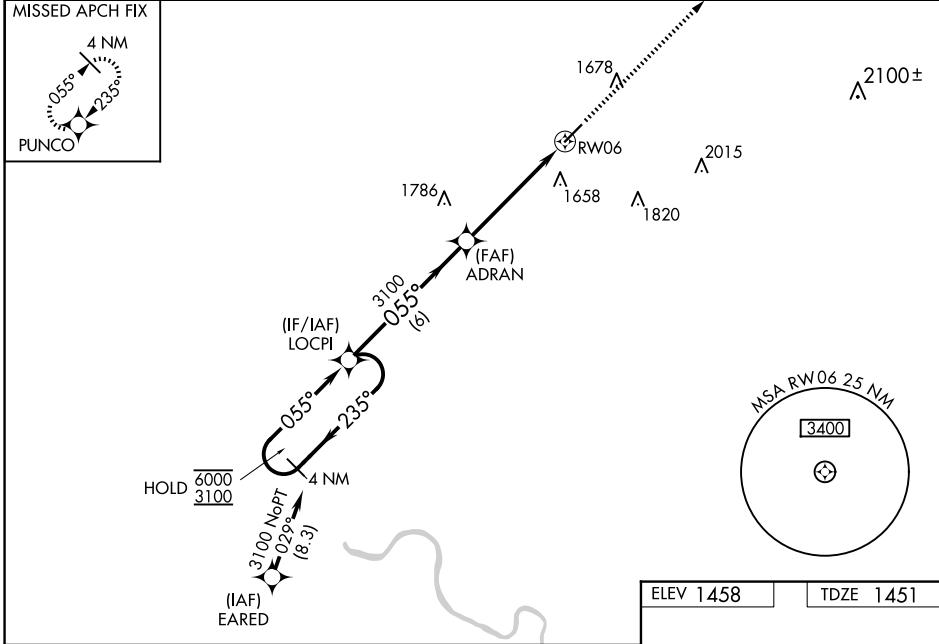
CLARION COUNTY (AXQ)

RNP APCH.

**NA** Baro-VNAV and VDP NA when using Dubois altimeter setting. Rwy 6 helicopter visibility reduction below  $\frac{3}{4}$  NA. For uncompensated Baro-VNAV systems, LNAV/VNAV NA below -17°C or above 54°C. When local altimeter setting not received, use Dubois altimeter setting and increase LPV DA to 1809 feet, LNAV/VNAV DA to 2093 feet, and all visibilities  $\frac{3}{8}$  SM; increase all MDAs 120 feet and LNAV visibility Cats C/D  $\frac{3}{8}$  SM, and Circling Cat C/D visibility  $\frac{1}{2}$  SM.

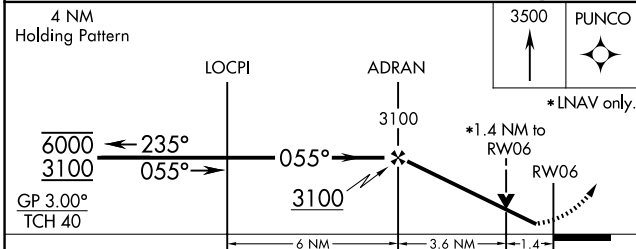
MISSED APPROACH: Climb to 3500 direct PUNCO and hold.

AWOS-3 <b>118.275</b>	CLEVELAND CENTER <b>126.725 291.65</b>	UNICOM <b>122.8 (CTAF) 0</b>
--------------------------	---	---------------------------------

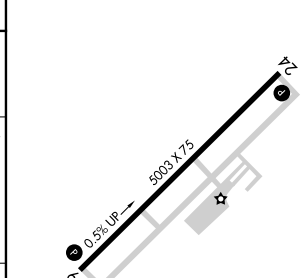


NE-4, 15 MAY 2025 to 12 JUN 2025

NE-4, 15 MAY 2025 to 12 JUN 2025



ELEV 1458	TDZE 1451
-----------	-----------



CATEGORY	A	B	C	D
LPV DA	1701-1		250 (300-1)	
LNAV/VNAV DA	1985-1½		534 (600-1½)	
LNAV MDA	1920-1	469 (500-1)	1920-1¾	469 (500-1¾)
CIRCLING	1980-1	522 (600-1)	2100-1¾ 642 (700-1¾)	2180-2¼ 722 (800-2¼)

MIRL Rwy 6-24  
REIL Rwy 6 and 24