

RNAV (GPS) RWY 20

BRAXTON COUNTY (48I)

APP CRS 196°	Rwy Idg 3815
	TDZE 1276
	Apt Elev 1276

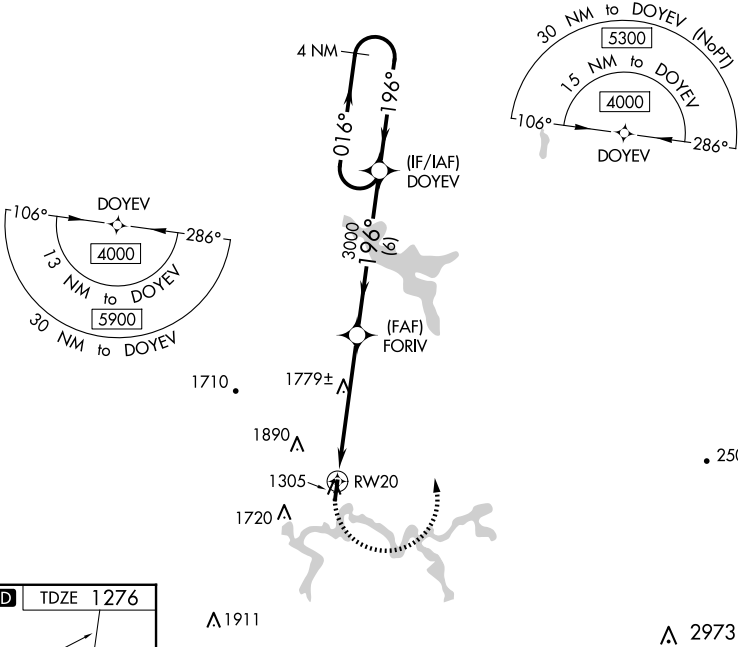
▼ DME/DME RNP-0.3 NA. Procedure NA at night. Helicopter visibility reduction below 1 SM NA.
▲ NA When local altimeter setting not received, use Clarksburg altimeter setting and increase all MDA 260 feet. Increase LNAV Cat A/B visibility ¼ mile, LNAV Cat C visibility ½ mile, and Circling Cat A visibility ¼ mile.

MISSED APPROACH:
 Climbing left turn to 4000 direct DOYEV and hold.

AWOS-3PT
118.225

CLARKSBURG APP CON ★
121.15 284.65

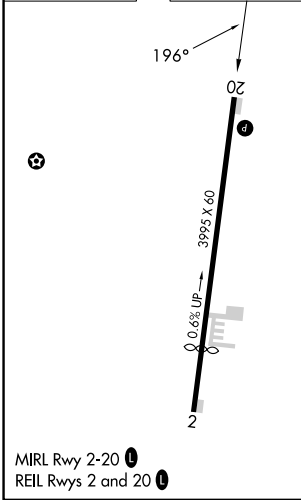
CTAF
122.9 0



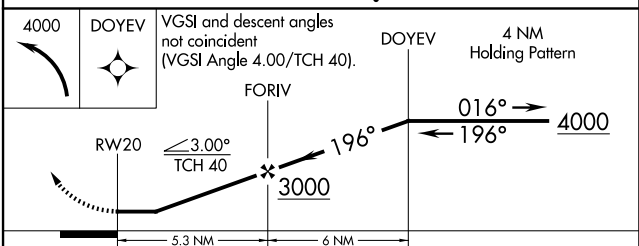
NE-4, 15 MAY 2025 to 12 JUN 2025

NE-4, 15 MAY 2025 to 12 JUN 2025

ELEV 1276 **D** TDZE 1276



MIRL Rwy 2-20 **0**
 REIL Rwy 2 and 20 **0**



CATEGORY	A	B	C	D
LNAV MDA	2060-1 784 (800-1)	2060-1 ¼ 784 (800-1 ¼)	2060-2 ½ 784 (800-2 ½)	NA
C CIRCLING	2060-1 784 (800-1)	2240-1 ½ 964 (1000-1 ½)	2240-3 964 (1000-3)	NA

RNAV (GPS) RWY 20