

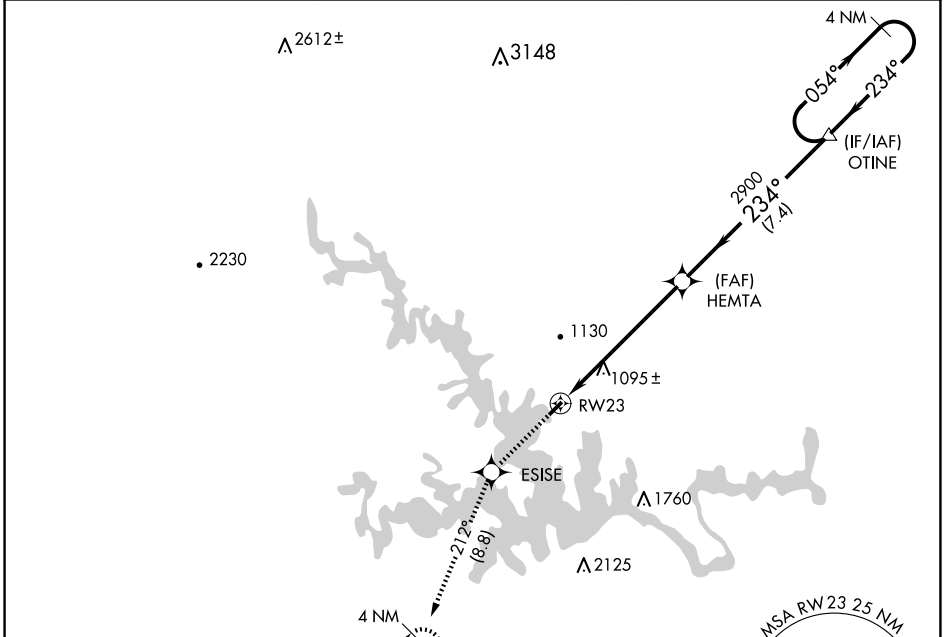
APP CRS <b>234°</b>	Rwy Idg <b>3058</b>
	TDZE <b>892</b>
	Apt Elev <b>892</b>

# RNAV (GPS) RWY 23

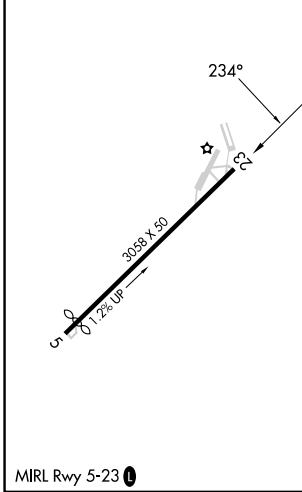
SMITH MOUNTAIN LAKE (W91)

<p><b>NA</b></p> <p>DME/DME RNP-0.3 NA. Use Lynchburg altimeter setting; when not received, use Roanoke altimeter setting and increase all MDA 40 feet. Procedure NA at night. Helicopter visibility reduction below 1 SM NA.</p>	<p>MISSED APPROACH: Climb to 4000 direct ESISE and on track 212° to PIGGS and hold.</p>
---	---

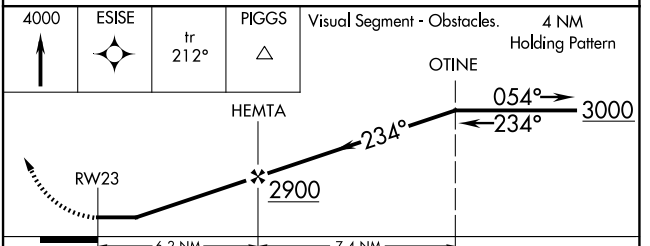
LYH ASOS <b>119.8</b>	ROANOKE APP CON <b>135.0 254.325</b>	UNICOM <b>122.975 (CTAF) 0</b>
--------------------------	---	-----------------------------------



ELEV 892	TDZE 892
----------	----------



4000	ESISE	tr 212°	PIGGS	Visual Segment - Obstacles.	4 NM Holding Pattern
↑	✧		△		



CATEGORY	A	B	C	D
LNAV MDA	1900-3	1008 (1100-3)	NA	
CIRCLING	1900-3	1008 (1100-3)	NA	

NE-3, 15 MAY 2025 to 12 JUN 2025

NE-3, 15 MAY 2025 to 12 JUN 2025