

APP CRS	Rwy Idg	3049
176°	TDZE	842
	Apt Elev	842

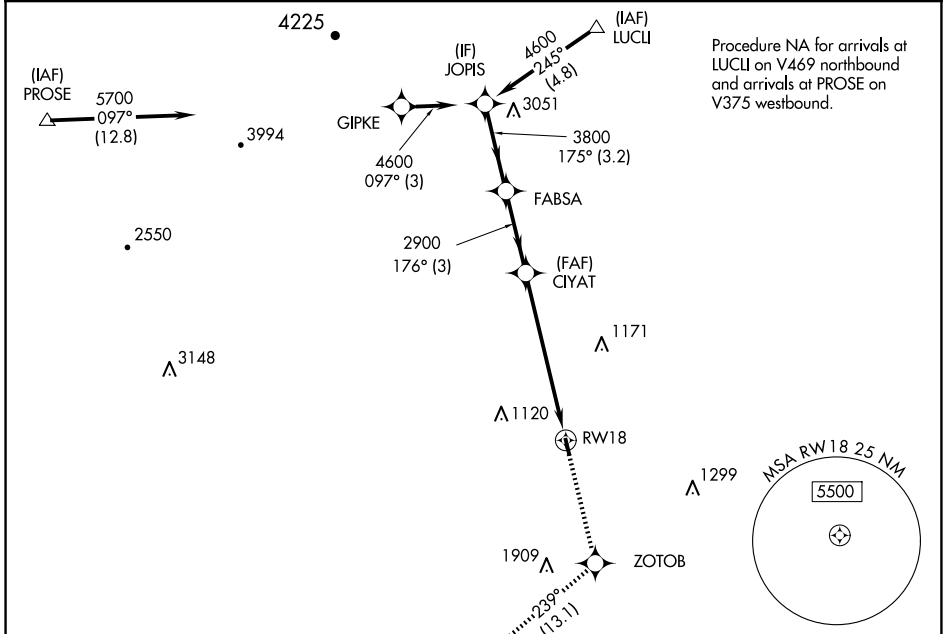
RNAV (GPS) RWY 18

NEW LONDON (W90)

RNP APCH.
 ▼ Rwy 18 helicopter visibility reduction below 1 SM NA. Procedure
 ▲ NA NA at night. Use Lynchburg altimeter setting.

MISSED APPROACH: Climb to 4000 direct ZOTOB and on track 239° to AYARA and hold.

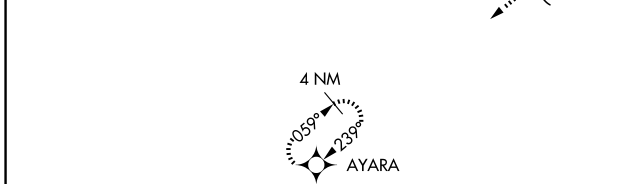
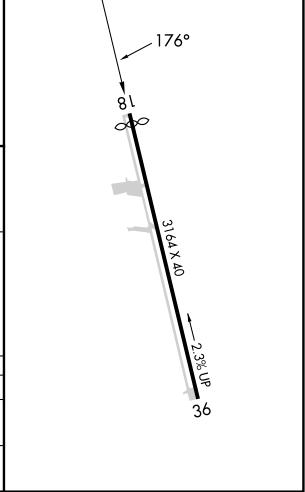
LYH ASOS 119.8	ROANOKE APP CON 135.0 254.325	UNICOM 122.8 (CTAF)
--------------------------	---	-------------------------------



NE-3, 15 MAY 2025 to 12 JUN 2025

NE-3, 15 MAY 2025 to 12 JUN 2025

ELEV 842	TDZE 842
----------	----------



JOPIS	Visual Segment - Obstacles.		4000	ZOTOB	ir 239°	AYARA
4600	FABSA	CIYAT	3800			
			2900			
				RW18		
	3.2 NM	3 NM	6.2 NM			

CATEGORY	A	B	C	D
LNVA MDA	1860-3	1018 (1100-3)		NA
CIRCLING	1860-3	1018 (1100-3)		NA