

APP CRS	Rwy Idg	2932
283°	TDZE	939
	Apt Elev	939

RNAV (GPS) RWY 28

FALWELL (W24)

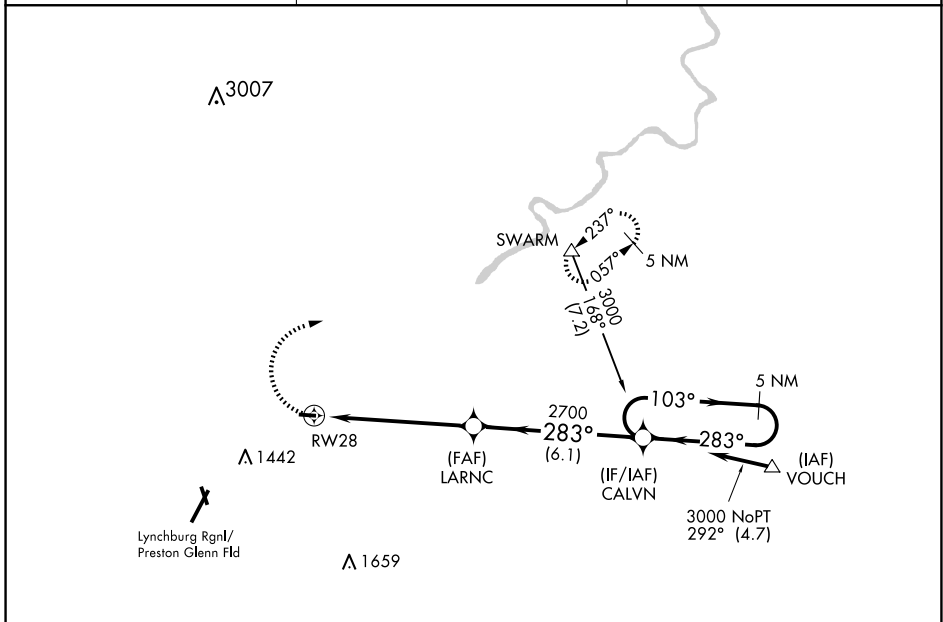
NA DME/DME RNP-0.3 NA. Use Lynchburg Regional/Preston Glenn Fld altimeter setting, when not received use Farmville altimeter setting and increase all MDA 160 feet. Procedure NA at night.

MISSED APPROACH: Climbing right turn to 3500 direct SWARM and hold.

LYH ASOS
119.8

ROANOKE APP CON
135.0 254.325

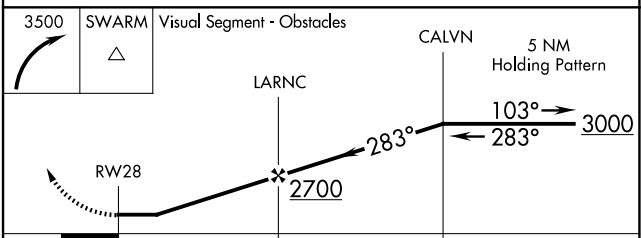
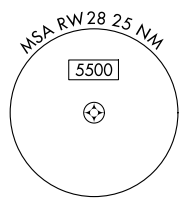
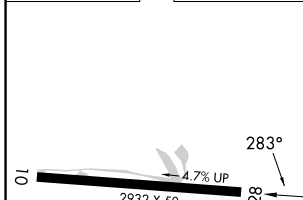
UNICOM
123.0 (CTAF)



NE-3, 15 MAY 2025 to 12 JUN 2025

NE-3, 15 MAY 2025 to 12 JUN 2025

ELEV 939	TDZE 939
----------	----------



MIRL Rwy 10-28	5.7 NM	6.1 NM		
CATEGORY	A	B	C	D
LNAV MDA	1460-1	521 (600-1)		NA