

APP CRS	Rwy Idg	2004
241°	TDZE	1436
	Apt Elev	1436

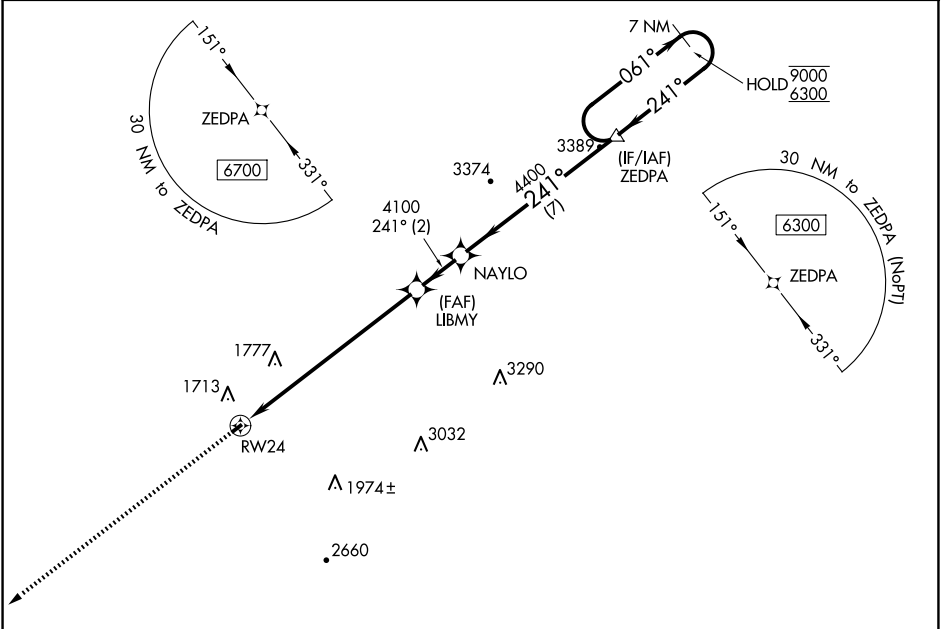
RNAV (GPS) RWY 24

EAGLE'S NEST (W13)

RNP APCH.
 Procedure NA at night. Rwy 24 helicopter visibility reduction below 1 SM NA.

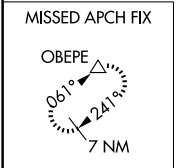
MISSED APPROACH: Climb to 6700 direct OBEPE and hold, continue climb-in-hold to 6700.

AWOS-3PT 118.625	POTOMAC APP CON 132.85 323.125	UNICOM 123.05 (CTAF)
----------------------------	--	--------------------------------

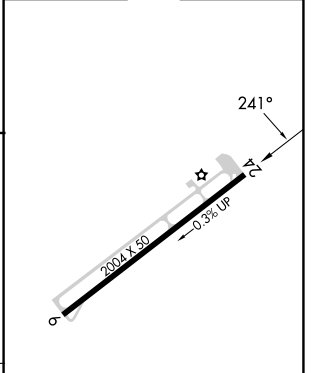
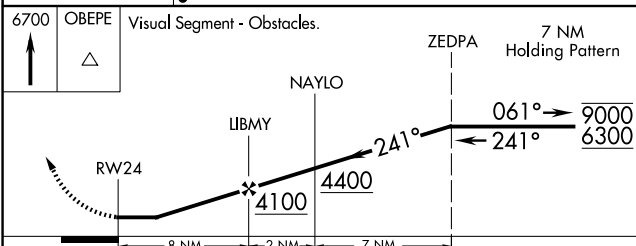


NE-3, 15 MAY 2025 to 12 JUN 2025

NE-3, 15 MAY 2025 to 12 JUN 2025



ELEV 1436	TDZE 1436
-----------	-----------



CATEGORY	A	B	C	D
LNNAV MDA	2640-3	1204 (1300-3)		NA
CIRCLING	2640-3	1204 (1300-3)		NA

MIRL Rwy 6-24